

PN: 851823 12V DC 851838 24V DC
851832 24V DC 851821 12V DC
851839 24V DC 851818 24V DC

Introduction

► Feature

- Line pull: 8,181 kg / 18,000 lb wire rope first layer
- Wire rope: 12.7 mm × 25 m (1/2" × 82') 6 × 29 - IWRC
- Brake: Patented cone brake holds full load
- Clutch: Turn the T-handle for rapid wire rope payout
- Control: Handheld pendant switch powers the winch

► Unpacking

- Winch assembly..... 1 pc
- Detachable control box..... 1 pc
- Remote control..... 1 pc
- Wire rope with clevis hook..... 1 pc
- Roller fairlead..... 1 pc
- 1.8 m (6') 2 gauge battery lead..... 1 pc

► Read this manual carefully

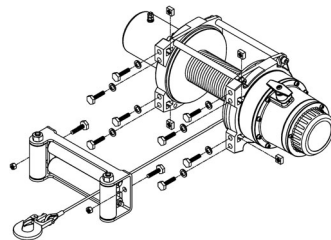
You should carefully read and understand this manual before operating it. Careless winch operation may result in personal injury hazards or property damage.

Installation

Before using the winch, make sure all electrical components have no corrosion or damaged; the environment should be clear and dry.

► Winch and roller fairlead mountings

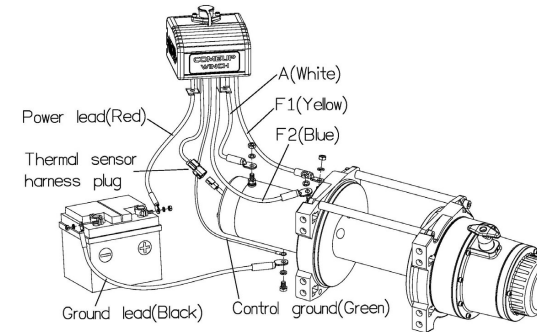
- It is very important that the winch will be mounted on a flat and hard surface of mounting channel in order to make sure the motor, drum and gearbox housing are aligned correctly.
- Roller Fairlead does not mount to the winch directly.



- The wire rope shall be wound in an under-wound orientation only.
- Eight (8) M12 x 1.75 pitch 8.8 grade high tensile steel bolts must be used in order to sustain the loads imposed on the winch mounting.
- Two (2) M12 x 1.75 pitch 8.8 grade high tensile steel bolts must be used for fastening the roller fairlead into the mounting channel.

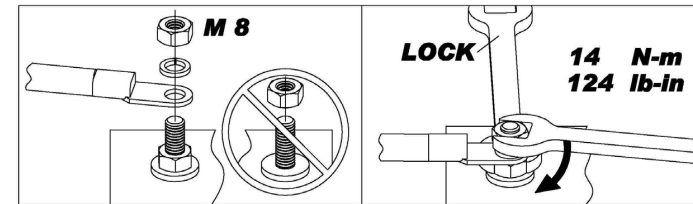
► Wiring Diagram

- Connect thermal sensor harness plug, control ground, and cable A/F1/F2 to the motor.
- Attach the ground lead firmly to the negative (-) battery terminal and power lead to the positive (+) battery terminal. The voltage drop for the winch motor must not exceed 10% of the nominal voltage of 12/24V DC.



► Nut fastening for motor & contactor

1. Holding the lower nut on the stub and fastening the upper nut clockwise.
2. The torque setting for nut is 14 N-m/124 lb-in.



Алматы (7273)495-231
Ангарск (3955)60-70-56
Архангельск (8182)63-90-72
Астрахань (8512)99-46-04
Барнаул (3852)73-04-60
Белгород (4722)40-23-64
Благовещенск (4162)22-76-07
Брянск (4832)59-03-52
Владивосток (423)249-28-31
Владикавказ (8672)28-90-48
Владимир (4922)49-43-18
Волгоград (844)278-03-48
Вологда (8172)26-41-59
Воронеж (473)204-51-73
Екатеринбург (343)384-55-89

Иваново (4932)77-34-06
Ижевск (3412)26-03-58
Иркутск (395)279-98-46
Казань (843)206-01-48
Калининград (4012)72-03-81
Калуга (4842)92-23-67
Кемерово (3842)65-04-62
Киров (8332)68-02-04
Коломна (4966)23-41-49
Кострома (4942)77-07-48
Краснодар (861)203-40-90
Красноярск (391)204-63-61
Курск (4712)77-13-04
Курган (3522)50-90-47
Липецк (4742)52-20-81

Россия +7(495)268-04-70

Магнитогорск (3519)55-03-13
Москва (495)268-04-70
Мурманск (8152)59-64-93
Набережные Челны (8552)20-53-41
Нижегород (831)429-08-12
Новокузнецк (3843)20-46-81
Ноябрьск (3496)41-32-12
Новосибирск (383)227-86-73
Омск (3812)21-46-40
Орел (4862)44-53-42
Оренбург (3532)37-68-04
Пенза (8412)22-31-16
Петрозаводск (8142)55-98-37
Псков (8112)59-10-37
Пермь (342)205-81-47

Казахстан +7(7172)727-132

Ростов-на-Дону (863)308-18-15
Рязань (4912)46-61-64
Самара (846)206-03-16
Санкт-Петербург (812)309-46-40
Саратов (845)249-38-78
Севастополь (8692)22-31-93
Саранск (8342)22-96-24
Симферополь (3652)67-13-56
Смоленск (4812)29-41-54
Сочи (862)225-72-31
Ставрополь (8652)20-65-13
Сургут (3462)77-98-35
Сыктывкар (8212)25-95-17
Тамбов (4752)50-40-97
Тверь (4822)63-31-35

Киргизия +996(312)96-26-47

Тольятти (8482)63-91-07
Томск (3822)98-41-53
Тула (4872)33-79-87
Тюмень (3452)66-21-18
Ульяновск (8422)24-23-59
Улан-Удэ (3012)59-97-51
Уфа (347)229-48-12
Хабаровск (4212)92-98-04
Чебоксары (8352)28-53-07
Челябинск (351)202-03-61
Череповец (8202)49-02-64
Чита (3022)38-34-83
Жукотск (4112)23-90-97
Ярославль (4852)69-52-93

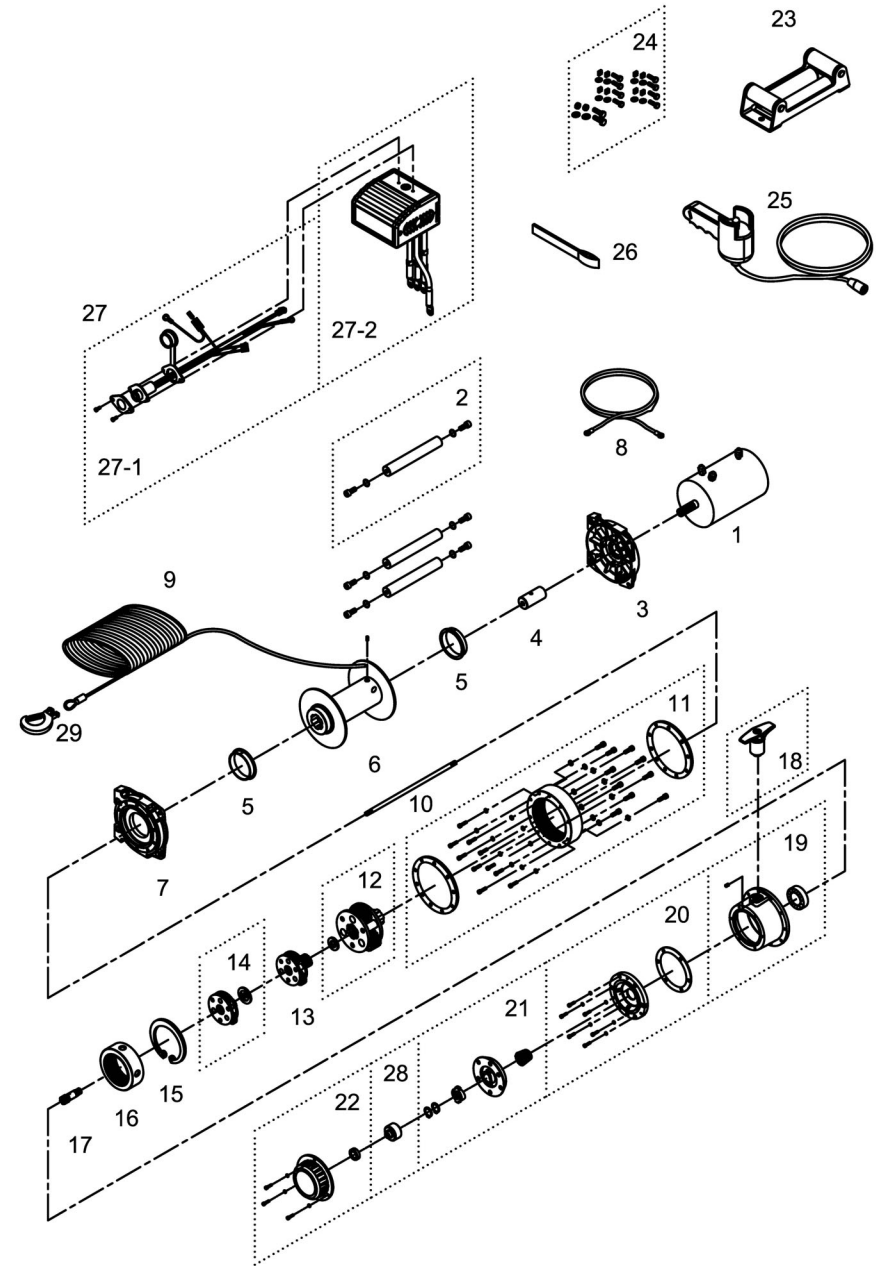
Warning

- The winch is not intended to be used in any manner for the movement or lifting of personnel.
- The rated line pull shown is based on the first layer of rope on the drum.
- The rope winding on the drum shall remain 5 wraps from the drum.

Parts List

Item No.	Description	Part No.	Qty
1	Motor 24V	881927	1
	Motor 12V	882502	
2	Tie bar kit	880045	3
3	Motor support rack	880046	1
4	Motor coupling	880047	1
5	Drum bushing	880048	2
6	Drum kit	881928	1
7	Gearbox support rack	880050	1
8	Grounding lead	880009	1
9	Wire rope	881929	1
10	1 st shaft	881930	1
11	3 rd ring gear kit	880054	1
12	3 rd stage carrier	881944	1
13	2 nd stage carrier	881943	1
14	1 st stage carrier	880107	1
15	Retaining ring	880058	1
16	1 st & 2 nd ring gear	880059	1
17	1 st pinion	880060	1
18	Clutch kit	880061	1
19	Gear box kit	880062	1
20	Brake base	880063	1
21	Cone brake disc kit	880021	1
22	Brake cover kit	880065	1
23	Roller fairlead	880066	1
24	Mounting hardware	880067	1
25	Remote control	880126	1
26	Handsaver strap	880026	1
27	Control box 12V	881164	1
	Control box 24V	881165	
27-1	Remote socket kit 12V	881373	1
	Remote socket kit 24V	881374	
27-2	Control pack 12V	881400	1
	Control pack 24V	881401	
28	Brake clutch base	881434	1
29	Clevis hook	881996	1

Winch Assembly



Introduction

► Feature

- Line pull: 6,804 kg / 15,000 lb wire rope first layer
- Wire rope: 11.1 mm × 27 m (7/16" × 89') galvanized aircraft 6 × 29 - IWRC
- Brake: Patented cone brake holds full load
- Clutch: Turn the T-handle for rapid wire rope payout
- Control: Handheld pendant switch powers the winch

► Unpacking

- Winch assembly..... 1 pc
- Detachable control box..... 1 pc
- Remote control..... 1 pc
- Wire rope with clevis hook except for PN:857329 & 857437..... 1 pc
- Roller fairlead..... 1 pc
- 1.8 m (6') 2 gauge battery lead..... 1 pc

► Read this manual carefully

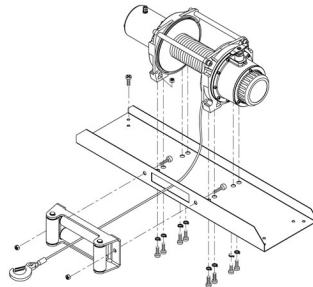
You should carefully read and understand this manual before operating it. Careless winch operation may result in personal injury hazards or property damage.

Installation

Before using the winch, make sure all electrical components have no corrosion or damaged; the environment should be clear and dry.

► Winch and roller fairlead mountings

- It is very important that the winch will be mounted on a flat and hard surface of mounting channel in order to make sure the motor, drum and gearbox housing are aligned correctly.
- Roller fairlead does not mount to the winch

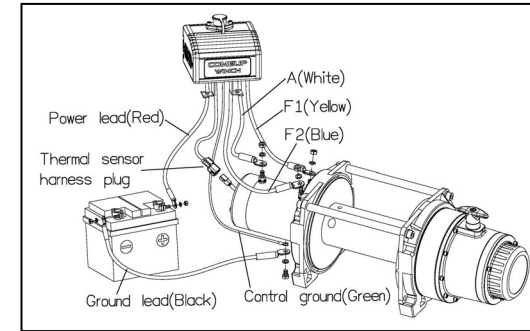


directly.

- The wire rope shall be wound in an under-wound orientation only.
- Eight (8) M12 x 1.75 pitch 8.8 grade high tensile steel bolts must be used in order to sustain the loads imposed on the winch mounting.
- Two (2) M12 x 1.75 pitch 8.8 grade high tensile steel bolts must be used for fastening the roller fairlead into the mounting channel.

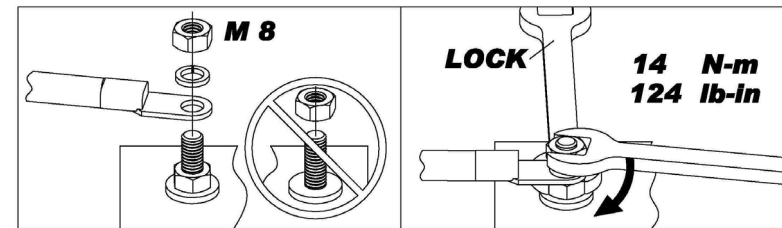
► Wiring Diagram

- Connect thermal sensor harness plug, control ground, and cable A/F1/F2 to the motor.
- Attach the ground lead firmly to the negative (-) battery terminal and power lead to the positive (+) battery terminal. The voltage drop for the winch motor must not exceed 10% of the nominal voltage of 12/24V DC.



► Nut fastening for motor & contactor

1. Holding the lower nut on the stub and fastening the upper nut clockwise.
2. The torque setting for nut is 14 N-m/124 lb-in.



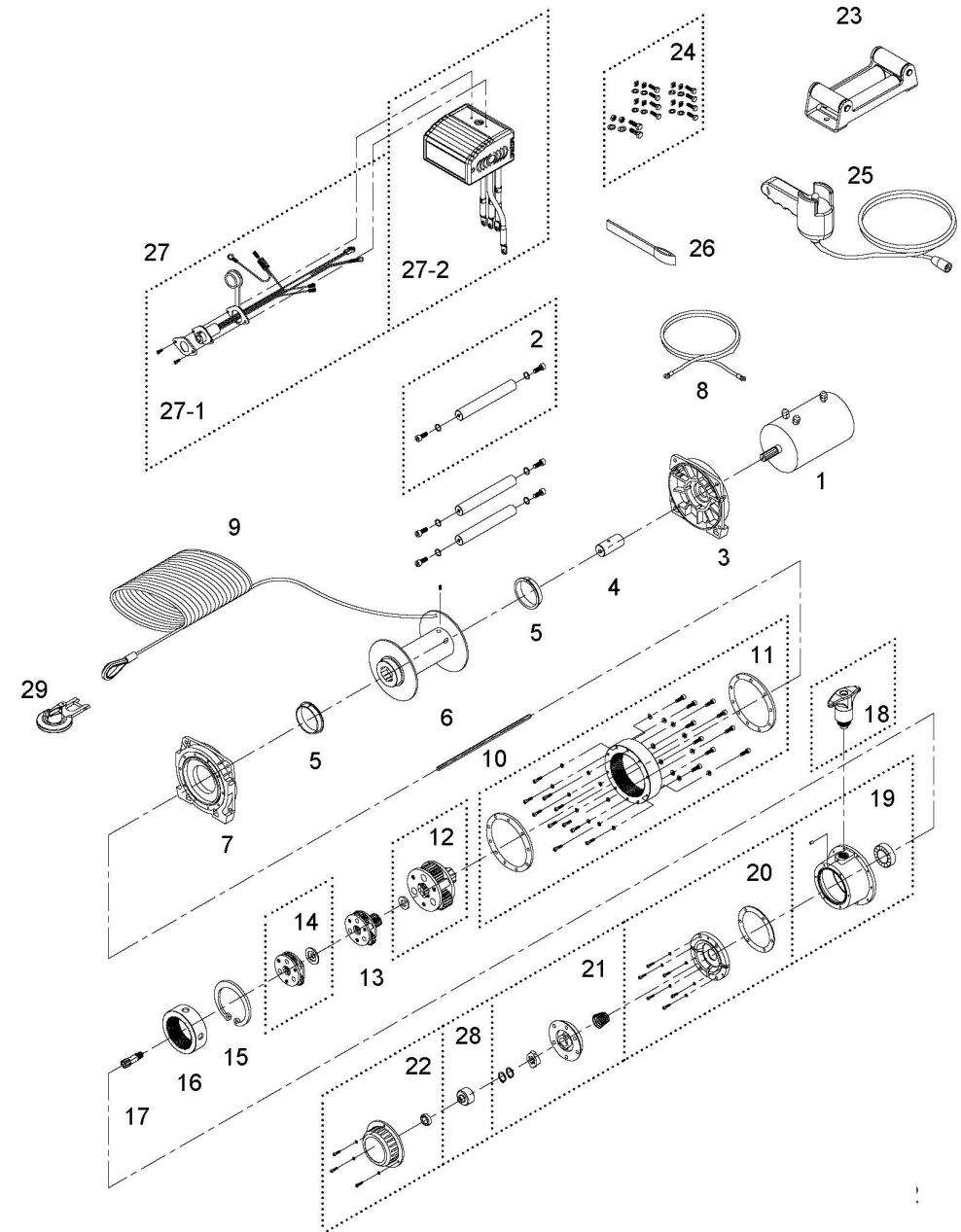
Warning

- The winch is not intended to be used in any manner for the movement or lifting of personnel.
- The rated line pull shown is based on the first layer of rope on the drum.
- The rope winding on the drum shall remain 5 wraps from the drum.

Parts List

Item No.	Description	Part No.	Qty
1	Motor 12V	881296	1
	Motor 24V	881297	
2	Tie bar kit	880045	3
3	Motor support rack	880046	1
4	Motor coupling	880047	1
5	Drum bushing	880048	2
6	Drum kit	880049	1
7	Gearbox support rack	880050	1
8	Grounding lead	880009	1
9	Wire rope	882027	1
10	1 st shaft	880053	1
11	3 rd ring gear kit	880054	1
12	3 rd stage carrier	881944	1
13	2 nd stage carrier	881943	1
14	1 st stage carrier	880107	1
15	Retaining ring	880058	1
16	1 st & 2 nd ring gear	880059	1
17	1 st pinion	880060	1
18	Clutch kit	880061	1
19	Gear box kit	880062	1
20	Brake base	880063	1
21	Cone brake disc kit	880021	1
22	Brake cover kit	880065	1
23	Roller fairlead	880066	1
24	Mounting hardware	880067	1
25	Remote control	880126	1
26	Handsaver strap	880026	1
27	Detachable control box 12V	881164	1
	Detachable control box 24V	881165	
27-1	Remote socket kit 12V	881373	1
	Remote socket kit 24V	881374	
27-2	Detachable control pack 12V	881400	1
	Detachable control pack 24V	881401	
28	Brake clutch base	881434	1
29	Clevis hook	881996	1

Winch Assembly



Introduction

► Feature

- Line pull: 5,443 kg / 12,000 lb wire rope first layer
- Wire rope: 9.5 mm × 38 m (3/8" × 125') galvanized aircraft A7 × 19
- Brake: Patented cone brake holds full load
- Clutch: Turn the T-handle for rapid wire rope payout
- Control: Handheld pendant switch powers the winch

► Unpacking

- Winch assembly..... 1 pc
- Detachable control box..... 1 pc
- Remote control..... 1 pc
- Wire rope with clevis hook..... 1 pc
- Roller fairlead..... 1 pc
- 1.8 m (6') 2 gauge battery lead..... 1 pc

► Read this manual carefully

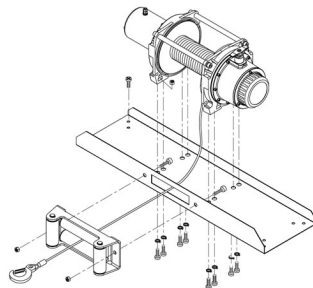
You should carefully read and understand this manual before operating it. Careless winch operation may result in personal injury hazards or property damage.

Installation

Before using the winch, make sure all electrical components have no corrosion or damaged; the environment should be clear and dry.

► Winch and roller fairlead mountings

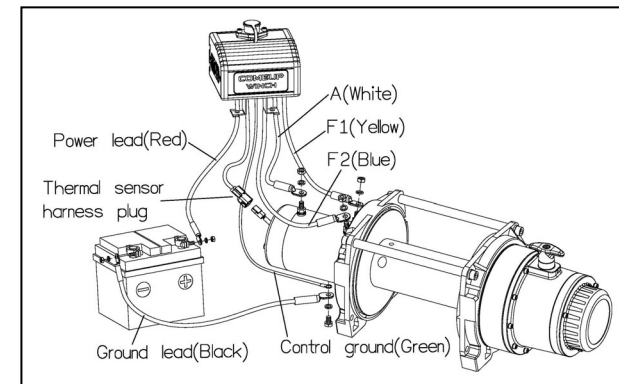
- It is very important that the winch will be mounted on a flat and hard surface of mounting channel in order to make sure the motor, drum and gearbox housing are aligned correctly.
- Roller fairlead does not mount to the winch directly.



- The wire rope shall be wound in an under-wound orientation only.
- Eight (8) M12 x 1.75 pitch 8.8 grade high tensile steel bolts must be used in order to sustain the loads imposed on the winch mounting.
- Two (2) M12 x 1.75 pitch 8.8 grade high tensile steel bolts must be used for fastening the roller fairlead into the mounting channel.

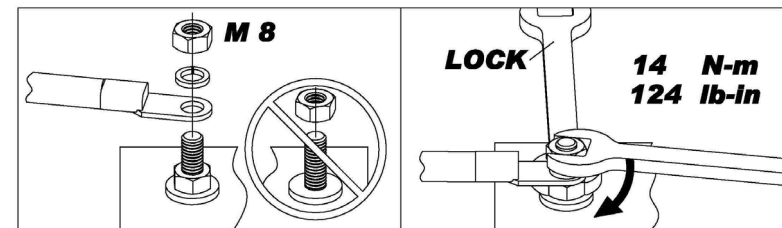
► Wiring Diagram

- Connect thermal sensor harness plug, control ground, and cable A/F1/F2 to the motor.
- Attach the ground lead firmly to the negative (–) battery terminal and power lead to the positive (+) battery terminal. The voltage drop for the winch motor must not exceed 10% of the nominal voltage of 12/24V DC.



► Nut fastening for motor & contactor

1. Holding the lower nut on the stub and fastening the upper nut clockwise.
2. The torque setting for nut is 14 N-m/124 lb-in.



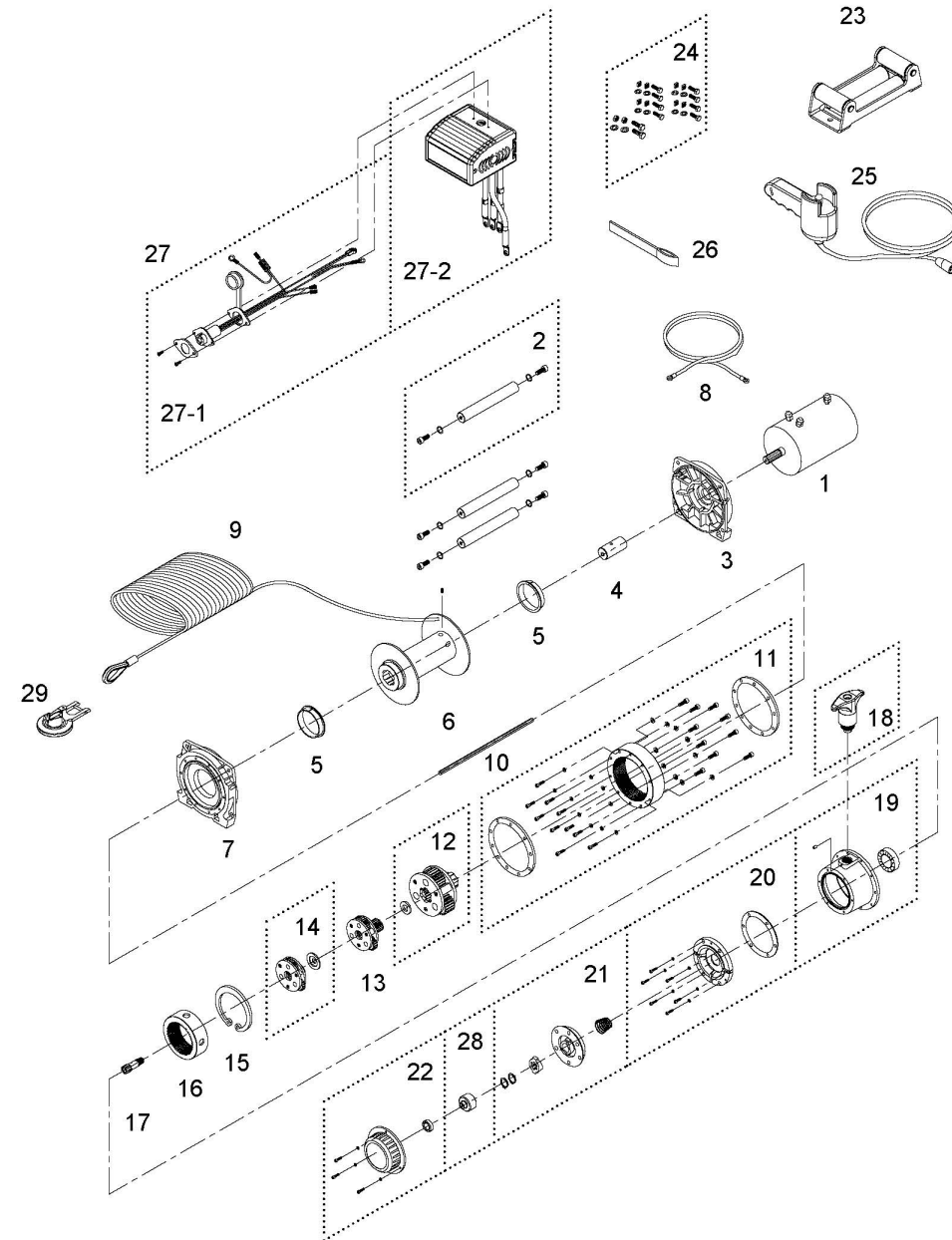
Warning

- The winch is not intended to be used in any manner for the movement or lifting of personnel.
- The rated line pull shown is based on the first layer of rope on the drum.
- The rope winding on the drum shall remain 5 wraps from the drum.

Parts List

Item No.	Description	Part No.	Qty
1	Motor 12V	881296	1
	Motor 24V	881297	
2	Tie bar kit	880045	3
3	Motor support rack	880046	1
4	Motor coupling	880047	1
5	Drum bushing	880048	2
6	Drum kit	882162	1
7	Gearbox support rack	880050	1
8	Grounding lead	880009	1
9	Wire rope	882026	1
10	1 st shaft	880053	1
11	3 rd ring gear kit	880054	1
12	3 rd stage carrier	881944	1
13	2 nd stage carrier	880056	1
14	1 st stage carrier	880057	1
15	Retaining ring	880058	1
16	1 st & 2 nd ring gear	880059	1
17	1 st pinion	880060	1
18	Clutch kit	880061	1
19	Gear box kit	880062	1
20	Brake base	880063	1
21	Cone brake disc kit	880021	1
22	Brake cover kit	880065	1
23	Roller fairlead	880066	1
24	Mounting hardware	880067	1
25	Remote control	880126	1
26	Handsaver strap	880026	1
27	Detachable control box 12V	881164	1
	Detachable control box 24V	881165	
27-1	Remote socket kit 12V	881373	1
	Remote socket kit 24V	881374	
27-2	Detachable control pack 12V	881400	1
	Detachable control pack 24V	881401	
28	Brake clutch base	881434	1
29	Clevis hook	881996	1

Winch Assembly



Introduction

► Feature

- Line pull: 5,443 kg / 12,000 lb wire rope first layer
- Synthetic rope: 11mm × 25 m (7/16" × 82') synthetic rope
- Brake: Patented cone brake holds full load
- Clutch: Turn the T-handle for rapid rope payout
- Control: Handheld pendant switch powers the winch

► Unpacking

- Winch assembly..... 1 pc
- Control box..... 1 pc
- Remote control..... 1 pc
- Synthetic rope with sling hook..... 1 pc
- Hawse fairlead..... 1 pc
- 1.8 m (6') 2 gauge battery lead..... 1 pc

► Read this manual carefully

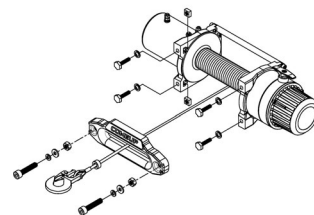
You should carefully read and understand this manual before operating it. Careless winch operation may result in personal injury hazards or property damage.

Installation

Before using the winch, make sure all electrical components have no corrosion or damaged; the environment should be clear and dry.

► Winch and hawse fairlead mountings

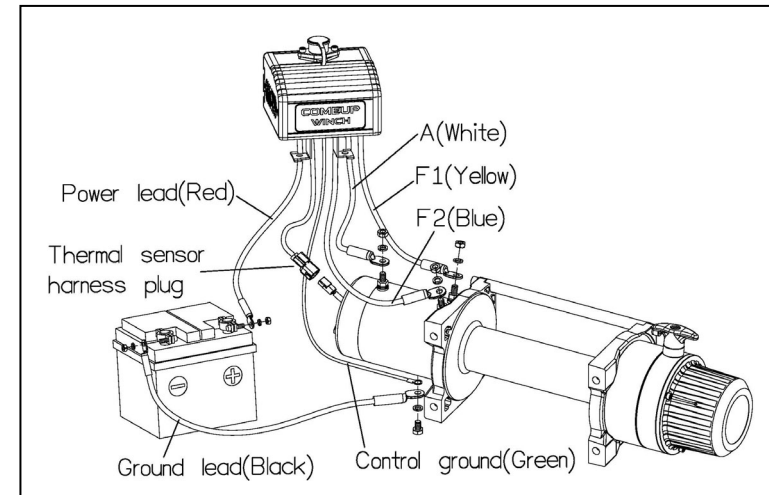
- It is very important that the winch will be mounted on a flat and hard surface of mounting channel in order to make sure the motor, drum and gearbox housing are aligned correctly.
- Hawse fairlead does not mount to the winch directly.
- The synthetic rope shall be wound in an under-wound orientation only.



- Four (4) M10 x 1.50 pitch 8.8 grade high tensile steel bolts must be used in order to sustain the loads imposed on the winch mounting.
- Two (2) M12 x 1.75 pitch 8.8 grade high tensile steel bolts must be used for fastening the synthetic fairlead into the mounting channel.

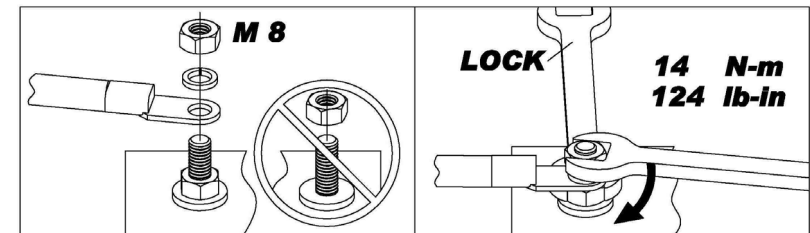
► Wiring Diagram

- Connect thermal sensor harness plug, control ground, and cable A/F1/F2 to the motor.
- Attach the ground lead firmly to the negative (-) battery terminal and power lead to the positive (+) battery terminal. The voltage drop for the winch motor must not exceed 10% of the nominal voltage of 12/24V DC.



► Nut fastening for motor & contactor

1. Holding the lower nut on the stub and fastening the upper nut clockwise.
2. The torque setting for nut is 14 N-m/124 lb-in.



Warning

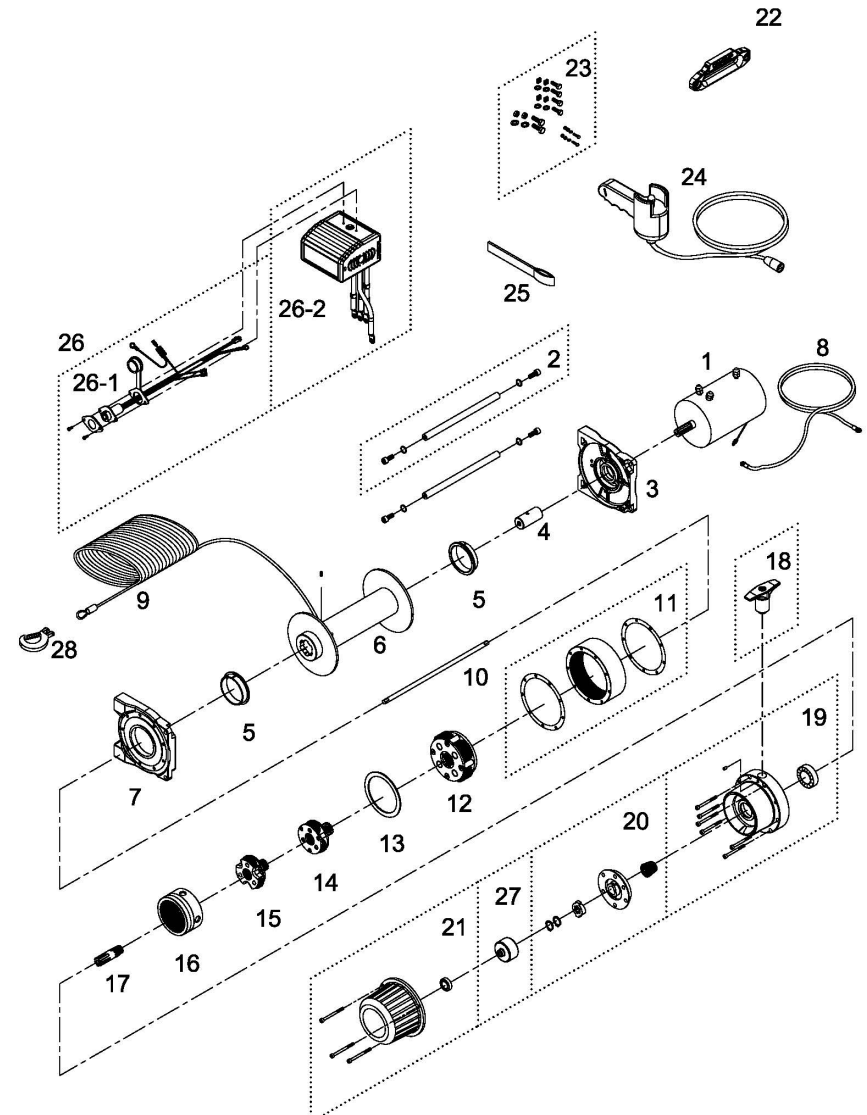
- The winch is not intended to be used in any manner for the movement or lifting of personnel.
- The rated line pull shown is based on the first layer of rope on the drum.

- The rope winding on the drum shall remain 10 wraps from the drum to support the rated load.
- Manufacturer is not responsible for the results of misuse, misapplication, faulty installation or abuse of synthetic rope in any way.

Parts List

Item No.	Description	Part No.	Qty
1	Motor 12V	882153	1
	Motor 24V	883126	
2	Tie bar kit	880003	2
3	Motor support rack	881779	1
4	Motor coupling	880005	1
5	Drum bushing	880006	2
6	Drum kit	881521	1
7	Gearbox support rack	883360	1
8	Grounding lead	880009	1
9	Synthetic rope	883285	1
10	1 st shaft	881523	1
11	3 rd ring gear kit	881524	1
12	3 rd stage carrier	881525	1
13	3 rd bushing	880014	1
14	2 nd stage carrier	881526	1
15	1 st stage carrier	881527	1
16	1 st & 2 nd ring gear	881528	1
17	1 st pinion kit	880018	1
18	Clutch kit	881303	1
19	Gear box kit	883361	1
20	Cone brake disc kit	880021	1
21	Brake cover kit	883362	1
22	Hawse fairlead	883410	1
23	Mounting hardware	880024	1
24	Remote control	880126	1
25	Handsaver strap	880026	1
26	Control box 12V	881164	1
	Control box 24V	881165	
26-1	Remote socket kit 12V	881373	1
	Remote socket kit 24V	881374	
26-2	Control pack 12V	881400	1
	Control pack 24V	881401	
27	Brake clutch base	881100	1
28	Sling hook	882477	1

Winch Assembly



Self-Recovery Winch Model: *DV-12 light*

PN: 850012 12V / 931811 12V
850124 24V / 931822 24V

Introduction

► Feature

- Line pull: 5,443 kg / 12,000 lb wire rope first layer
- Wire rope: 9.5 mm × 25 m (3/8" × 82') galvanized aircraft A7 × 19
- Brake: Patented cone brake holds full load
- Clutch: Turn the T-handle for rapid wire rope payout
- Control: Handheld pendant switch powers the winch

► Unpacking

- Winch assembly..... 1 pc
- Detachable control box..... 1 pc
- Remote control..... 1 pc
- Wire rope with clevis hook..... 1 pc
- Roller fairlead..... 1 pc
- 1.8 m (6') 2 gauge battery lead..... 1 pc

► Read this manual carefully

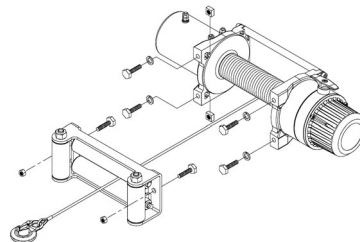
You should carefully read and understand this manual before operating it. Careless winch operation may result in personal injury hazards or property damage.

Installation

Before using the winch, make sure all electrical components have no corrosion or damaged; the environment should be clear and dry.

► Winch and roller fairlead mountings

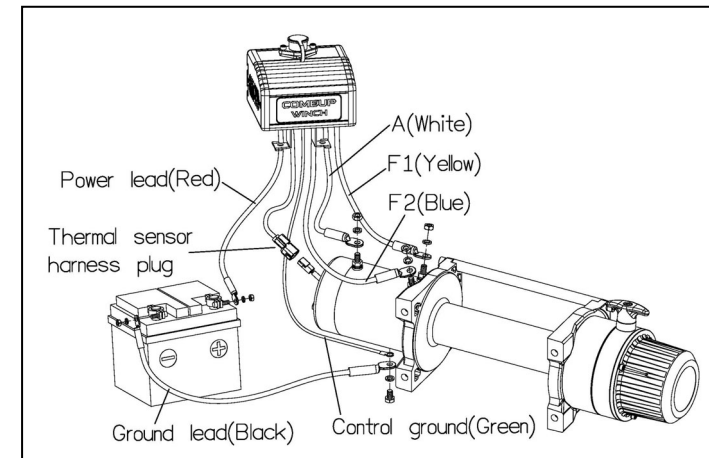
- It is very important that the winch will be mounted on a flat and hard surface of mounting channel in order to make sure the motor, drum and gearbox housing are aligned correctly.
- Roller fairlead does not mount to the winch directly.



- The wire rope shall be wound in an under-wound orientation only.
- Four (4) M10 x 1.50 pitch 8.8 grade high tensile steel bolts must be used in order to sustain the loads imposed on the winch mounting.
- Two (2) M12 x 1.75 pitch 8.8 grade high tensile steel bolts must be used for fastening the roller fairlead into the mounting channel.

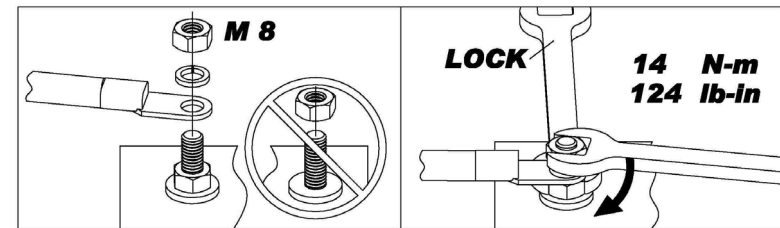
► Wiring Diagram

- Connect thermal sensor harness plug, control ground, and cable A/F1/F2 to the motor.
- Attach the ground lead firmly to the negative (–) battery terminal and power lead to the positive (+) battery terminal. The voltage drop for the winch motor must not exceed 10% of the nominal voltage of 12/24V DC.



► Nut fastening for motor & contactor

1. Holding the lower nut on the stub and fastening the upper nut clockwise.
2. The torque setting for nut is 14 N-m/124 lb-in.



Warning

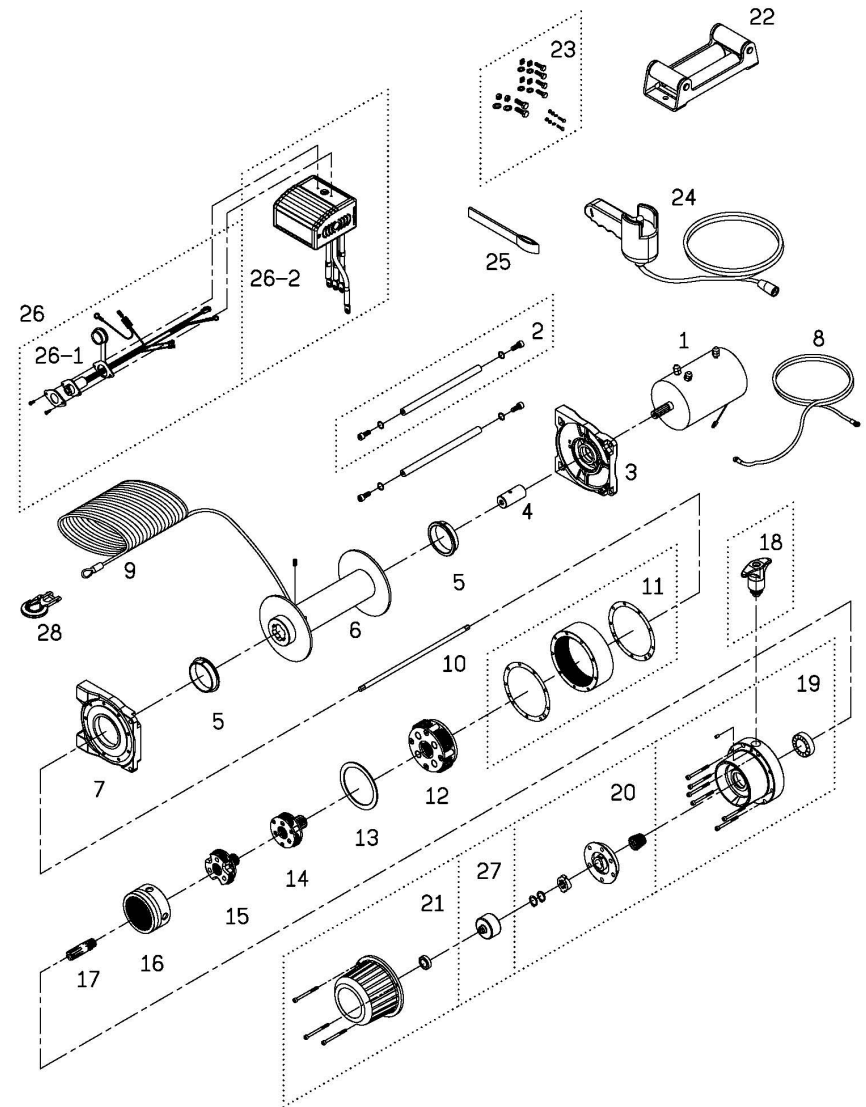
- The winch is not intended to be used in any manner for the movement or lifting of personnel.

- The rated line pull shown is based on the first layer of rope on the drum.
- The rope winding on the drum shall remain 5 wraps from the drum.

Parts List

Item No.	Description	Part No.	Qty
1	Motor 12V	882153	1
	Motor 24V	883126	
2	Tie bar kit	880003	2
3	Motor support rack	881779	1
4	Motor coupling	880005	1
5	Drum bushing	880006	2
6	Drum kit	881521	1
7	Gearbox support rack	883360	1
8	Grounding lead	880009	1
9	Wire rope	881994	1
10	1 st shaft	881523	1
11	3 rd ring gear kit	881524	1
12	3 rd stage carrier	881525	1
13	3 rd bushing	880014	1
14	2 nd stage carrier	881526	1
15	1 st stage carrier	881527	1
16	1 st & 2 nd ring gear	881528	1
17	1 st pinion kit	880018	1
18	Clutch kit	881303	1
19	Gear box kit	883361	1
20	Cone brake disc kit	880021	1
21	Brake cover kit	883362	1
22	Roller fairlead	880023	1
23	Mounting hardware	880024	1
24	Remote control	880126	1
25	Handsaver strap	880026	1
26	Detachable control box 12V	881164	1
	Detachable control box 24V	881165	
26-1	Remote socket kit 12V	881373	1
	Remote socket kit 24V	881374	
26-2	Detachable control pack 12V	881400	1
	Detachable control pack 24V	881401	
27	Brake clutch base	881100	1
28	Clevis hook	881996	1

Winch Assembly



Introduction

► Feature

- Line pull: 9,000 lb wire rope first layer
- Synthetic rope: 10 mm × 30.5 m (3/8"×100') synthetic rope
- Brake: Patented cone brake holds full load
- Clutch: Turn the T-handle for rapid rope payout
- Control: Handheld pendant switch to power the winch

► Unpacking

- Winch assembly..... 1 pc
- Control box..... 1 pc
- Remote control..... 1 pc
- Synthetic rope with sling hook..... 1 pc
- Hawse fairlead..... 1 pc
- 6' 2 gauge battery lead..... 1 pc

► Read this manual carefully

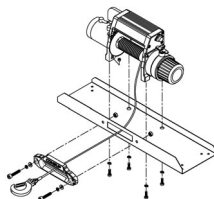
You should carefully read and understand this manual before operating it. Careless winch operation may result in personal injury hazards or property damage.

Installation

Before using the winch, make sure all electrical components have no corrosion or damaged; the environment should be clear and dry.

► Winch and roller fairlead mountings

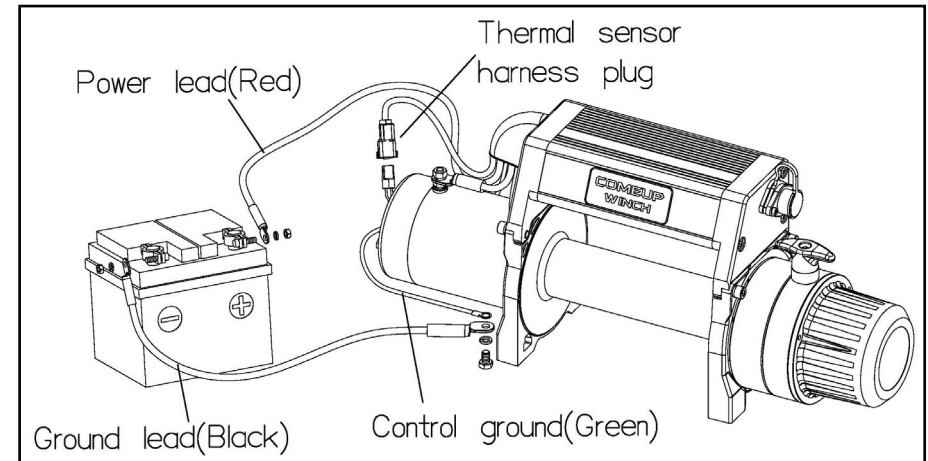
- It is very important that the winch will be mounted on a flat and hard surface of mounting channel in order to make sure the motor, drum and gearbox housing are aligned correctly.
- Hawse fairlead does not mount to the winch directly.
- The synthetic rope shall be wound in an under-wound orientation only.



- Four (4) M10 x 1.50 pitch 10.9 grade with 63.8 N-m torque settings (maximum) high tensile steel bolts must be used in order to sustain the loads imposed on the winch mounting.
- Two (2) M10 x 1.50 pitch stainless steel bolts must be used for fastening the hawse fairlead into the mounting channel.

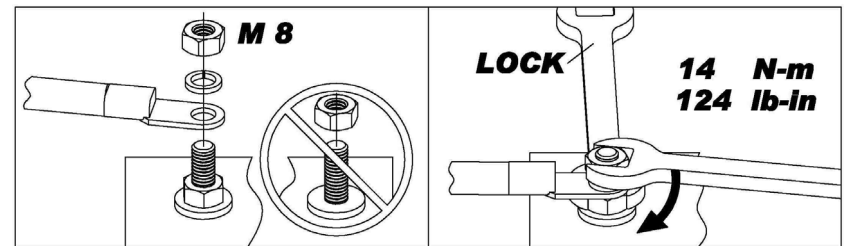
► Wiring Diagram

- Connect thermal sensor harness plug, control ground, and cable A/F1/F2 to the motor.
- Attach the ground lead firmly to the negative (-) battery terminal and power lead to the positive (+) battery terminal. The voltage drop for the winch motor must not exceed 10% of the nominal voltage of 12/24V DC.



► Nut fastening for motor & contactor

1. Holding the lower nut on the stub and fastening the upper nut clockwise.
2. The torque setting for nut is 124 lb-in.



Warning

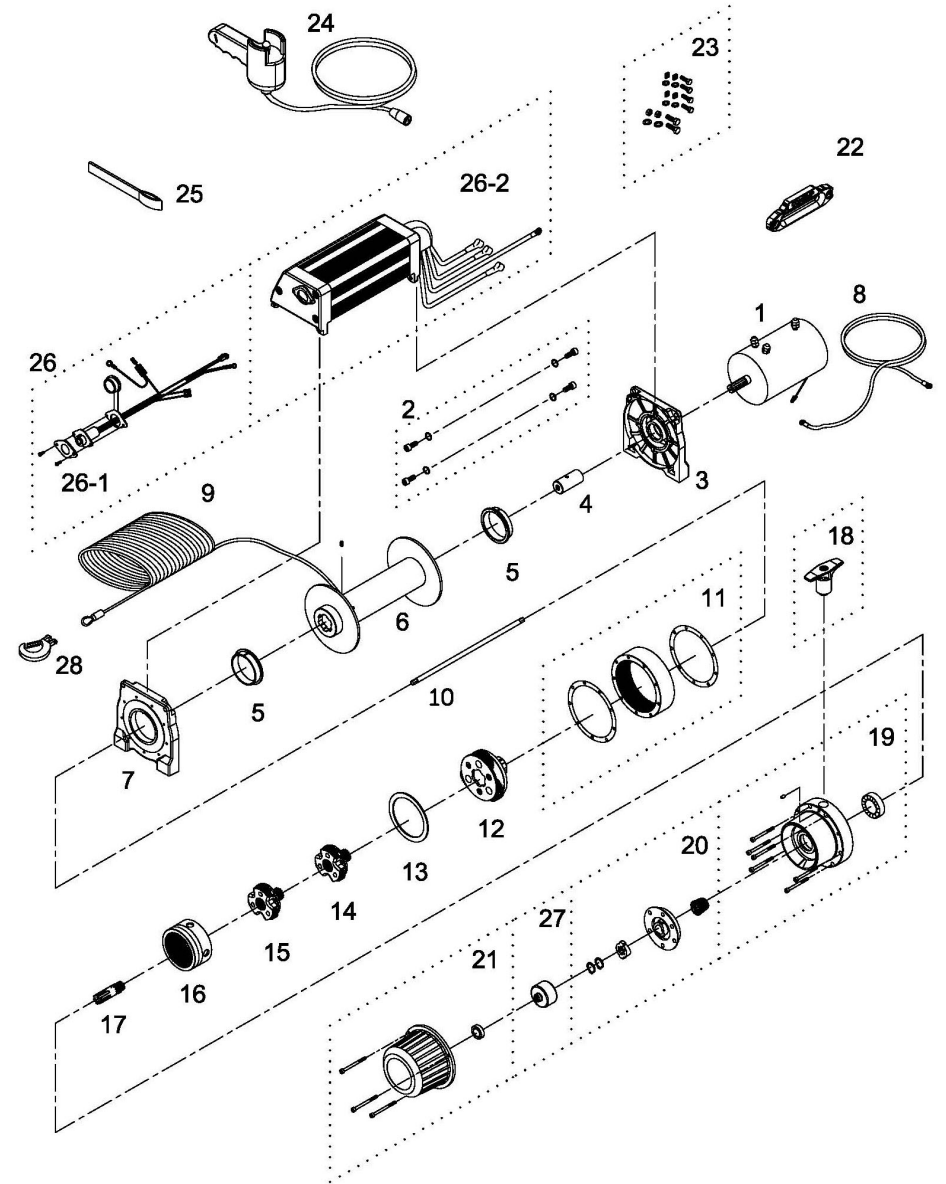
- The winch is not intended to be used in any manner for the movement or lifting of personnel.

- The rated line pull shown is based on the first layer of rope on the drum.
- The rope winding on the drum shall remain 10 wraps from the drum to support the rated load.
- Manufacturer is not responsible for the results of misuse, misapplication, faulty installation or abuse of synthetic rope in any way.

Parts List

Item No.	Description	Part No.	Qty
1	Motor 12V	882153	1
	Motor 24V	883126	
2	Bolt, washer kit	880051	1
3	Motor support rack	881779	1
4	Motor coupling	880005	1
5	Drum bushing	880006	2
6	Drum kit	881521	1
7	Gearbox support rack	881780	1
8	Grounding lead	880009	1
9	Synthetic rope	883248	1
10	1 st shaft	880011	1
11	3 rd ring gear kit	881781	1
12	3 rd stage carrier	880013	1
13	3 rd bushing	880014	1
14	2 nd stage carrier	880015	1
15	1 st stage carrier	880016	1
16	1 st & 2 nd ring gear	880017	1
17	1 st pinion kit	880018	1
18	Clutch kit	881303	1
19	Gear box kit	881782	1
20	Cone brake disc kit	880021	1
21	Brake cover kit	881783	1
22	Hawse fairlead	883410	1
23	Mounting hardware	880125	1
24	Remote control	880126	1
25	Handsaver strap	880026	1
26	Control box 12V	883127	1
	Control box 24V	883128	
26-1	Remote socket kit 12V	881373	1
	Remote socket kit 24V	881374	
26-2	Control pack 12V	883129	1
	Control pack 24V	883130	
27	Brake clutch base	881100	1
28	Sling hook	882477	1

Winch Assembly



Introduction

► **Feature**

- Line pull: 9,000 lb wire rope first layer
- Synthetic rope: 10 mm × 30.5 m (3/8"×100') synthetic rope
- Brake: Patented cone brake holds full load
- Clutch: Turn the T-handle for rapid rope payout
- Control: Handheld pendant switch to power the winch

► **Unpacking**

- Winch assembly..... 1 pc
- Control box..... 1 pc
- Remote control..... 1 pc
- Synthetic rope with sling hook..... 1 pc
- Hawse fairlead..... 1 pc
- 6' 2 gauge battery lead..... 1 pc

► **Read this manual carefully**

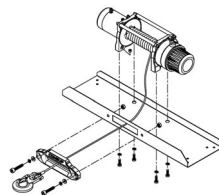
You should carefully read and understand this manual before operating it. Careless winch operation may result in personal injury hazards or property damage.

Installation

Before using the winch, make sure all electrical components have no corrosion or damaged; the environment should be clear and dry.

► **Winch and Hawse fairlead mountings**

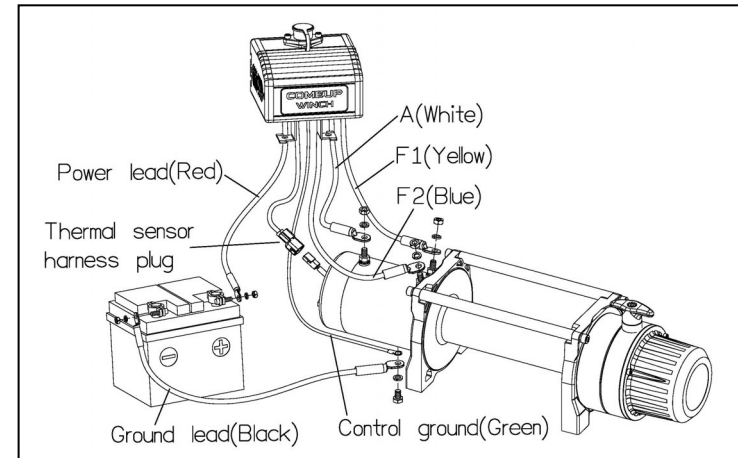
- It is very important that the winch will be mounted on a flat and hard surface of mounting channel in order to make sure the motor, drum and gearbox housing are aligned correctly.
- Hawse fairlead does not mount to the winch directly.



- The synthetic rope shall be wound in an under-wound orientation only.
- Four (4) M10 x 1.50 pitch 10.9 grade with 63.8 N-m torque settings (maximum) high tensile steel bolts must be used in order to sustain the loads imposed on the winch mounting.
- Two (2) M10 x 1.50 pitch stainless steel bolts must be used for fastening the hawse fairlead into the mounting channel.

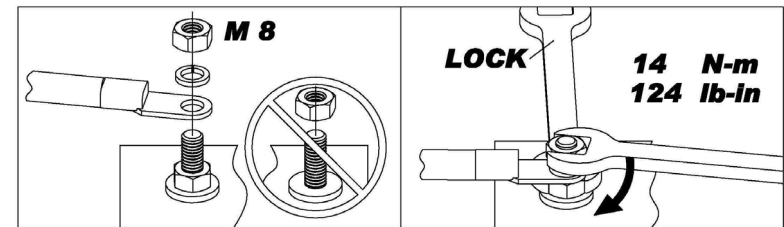
► **Wiring Diagram**

- Connect thermal sensor harness plug, control ground, and cable A/F1/F2 to the motor.
- Attach the ground lead firmly to the negative (-) battery terminal and power lead to the positive (+) battery terminal. The voltage drop for the winch motor must not exceed 10% of the nominal voltage of 12/24V DC.



► **Nut fastening for motor & contactor**

1. Holding the lower nut on the stub and fastening the upper nut clockwise.
2. The torque setting for nut is 124 lb-in.



Warning

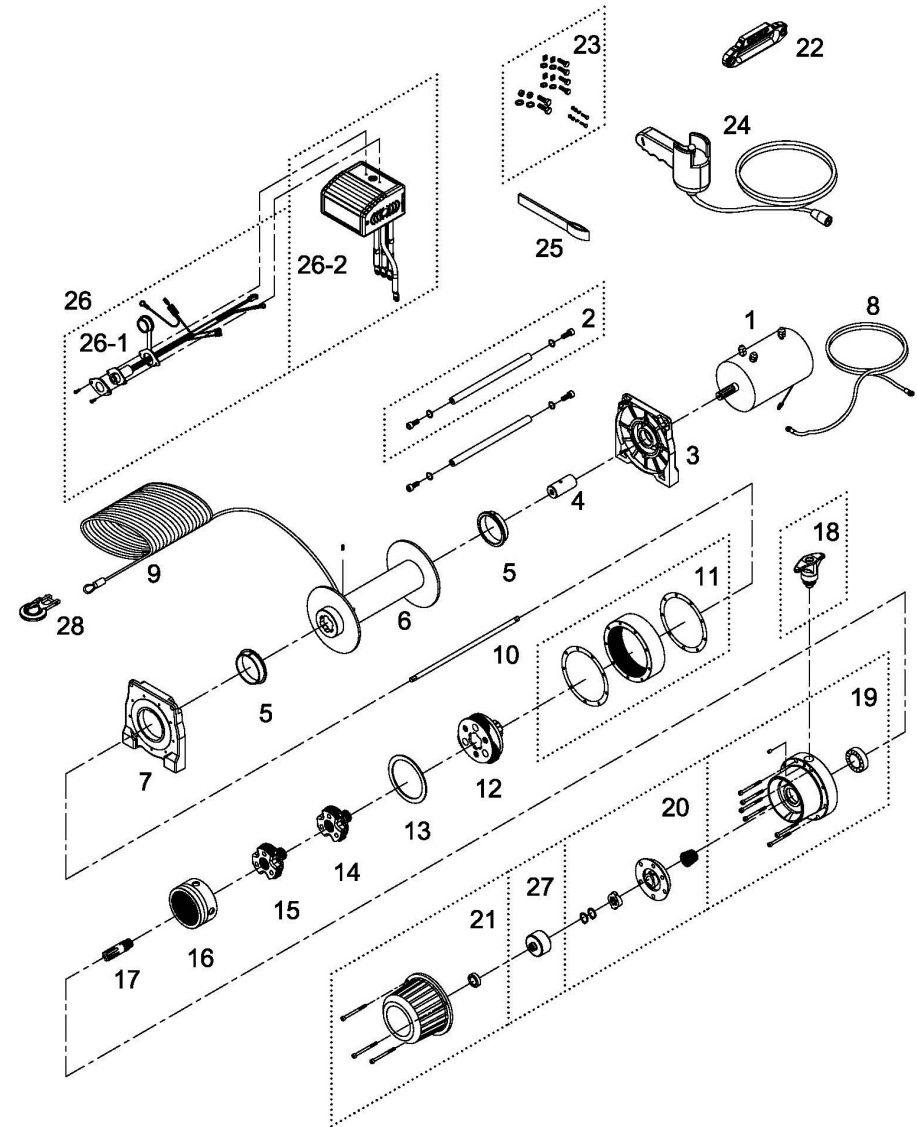
- The winch is not intended to be used in any manner for the movement or lifting of personnel.

- The rated line pull shown is based on the first layer of rope on the drum.
- The rope winding on the drum shall remain 10 wraps from the drum to support the rated load.
- Manufacturer is not responsible for the results of misuse, misapplication, faulty installation or abuse of synthetic rope in any way.

Parts List

Item No.	Description	Part No.	Qty
1	Motor 12V	882153	1
	Motor 24V	883126	
2	Tie bar kit	880003	2
3	Motor support rack	881779	1
4	Motor coupling	880005	1
5	Drum bushing	880006	2
6	Drum kit	881521	1
7	Gearbox support rack	881780	1
8	Grounding lead	880009	1
9	Synthetic rope	883248	1
10	1 st shaft	880011	1
11	3 rd ring gear kit	881781	1
12	3 rd stage carrier	880013	1
13	3 rd bushing	880014	1
14	2 nd stage carrier	880015	1
15	1 st stage carrier	880016	1
16	1 st & 2 nd ring gear	880017	1
17	1 st pinion kit	880018	1
18	Clutch kit	881303	1
19	Gear box kit	881782	1
20	Cone brake disc kit	880021	1
21	Brake cover kit	881783	1
22	Hawse fairlead	883410	1
23	Mounting hardware	880024	1
24	Remote control	880126	1
25	Handsaver strap	880026	1
26	Control box 12V	881164	1
	Control box 24V	881165	
26-1	Remote socket kit 12V	881373	1
	Remote socket kit 24V	881374	
26-2	Control pack 12V	881400	1
	Control pack 24V	881401	
27	Brake clutch base	881100	1
28	Sling hook	882477	1

Winch Assembly



Introduction

► Feature

- Line pull: 4,082 kg / 9,000 lb wire rope first layer
- Wire rope: 8.3 mm × 30.5 m (21/64" × 100') galvanized aircraft A7 × 19
- Brake: Patented cone brake holds full load
- Clutch: Turn the T-handle for rapid wire rope payout
- Control: Handheld pendant switch to power the winch

► Unpacking

- Winch assembly..... 1 pc
- Control box..... 1 pc
- Remote control..... 1 pc
- Wire rope with clevis hook except for PN:856389..... 1 pc
- Roller fairlead..... 1 pc
- 1.8 m (6') 2 gauge battery lead..... 1 pc

► Read this manual carefully

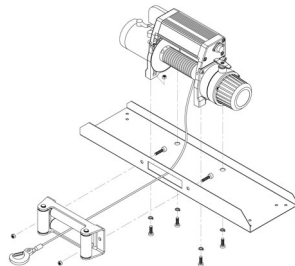
You should carefully read and understand this manual before operating it. Careless winch operation may result in personal injury hazards or property damage.

Installation

Before using the winch, make sure all electrical components have no corrosion or damaged; the environment should be clear and dry.

► Winch and roller fairlead mountings

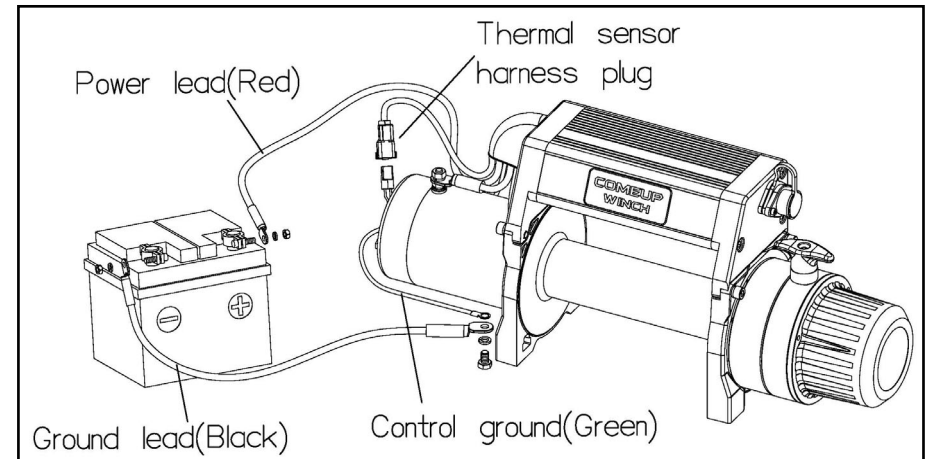
- It is very important that the winch will be mounted on a flat and hard surface of mounting channel in order to make sure the motor, drum and gearbox housing are aligned correctly.
- Roller fairlead does not mount to the winch directly.
- The wire rope shall be wound in an under-wound orientation only.



- Four (4) M10 x 1.50 pitch 10.9 grade with 63.8 N-m torque settings (maximum) high tensile steel bolts must be used in order to sustain the loads imposed on the winch mounting.
- Two (2) M12 x 1.75 pitch 8.8 grade with 76 N-m torque settings (maximum) high tensile steel bolts must be used for fastening the roller fairlead into the mounting channel.

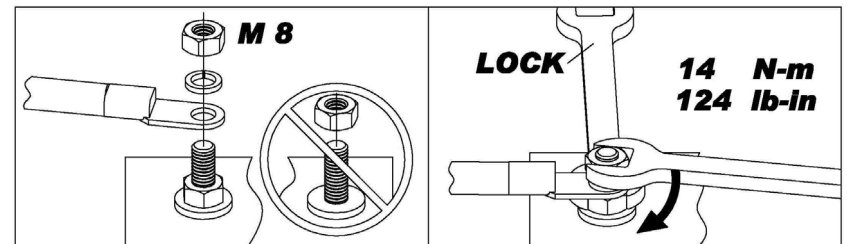
► Wiring Diagram

- Connect thermal sensor harness plug, control ground, and cable A/F1/F2 to the motor.
- Attach the ground lead firmly to the negative (-) battery terminal and power lead to the positive (+) battery terminal. The voltage drop for the winch motor must not exceed 10% of the nominal voltage of 12/24V DC.



► Nut fastening for motor & contactor

1. Holding the lower nut on the stub and fastening the upper nut clockwise.
2. The torque setting for nut is 14 N-m/124 lb-in.



Warning

- The winch is not intended to be used in any manner for the movement or lifting

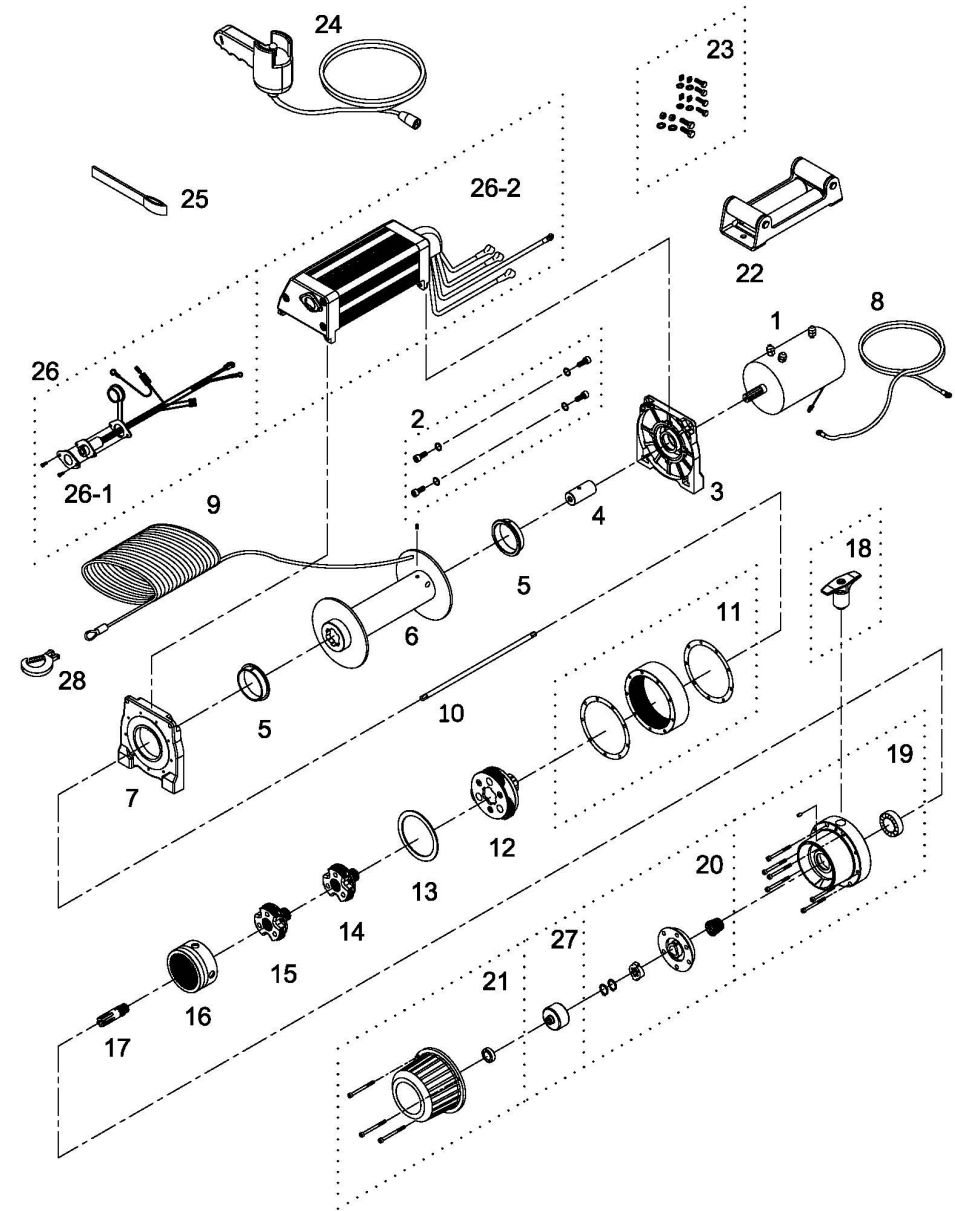
of personnel.

- The rated line pull shown is based on the first layer of rope on the drum.
- The rope winding on the drum shall remain 5 wraps from the drum.

Parts List

Item No.	Description	Part No.	Qty
1	Motor 12V	882153	1
	Motor 24V	883126	
2	Bolt, washer kit	880051	1
3	Motor support rack	881779	1
4	Motor coupling	880005	1
5	Drum bushing	880006	2
6	Drum kit	881101	1
7	Gearbox support rack	881780	1
8	Grounding lead	880009	1
9	Wire rope	881987	1
10	1 st shaft	880011	1
11	3 rd ring gear kit	881781	1
12	3 rd stage carrier	880013	1
13	3 rd bushing	880014	1
14	2 nd stage carrier	880015	1
15	1 st stage carrier	880016	1
16	1 st & 2 nd ring gear	880017	1
17	1 st pinion kit	880018	1
18	Clutch kit	881303	1
19	Gear box kit	881782	1
20	Cone brake disc kit	880021	1
21	Brake cover kit	881783	1
22	Roller fairlead	880023	1
23	Mounting hardware	880125	1
24	Remote control	880126	1
25	Handsaver strap	880026	1
26	Control box 12V	883127	1
	Control box 24V	883128	
26-1	Remote socket kit 12V	881373	1
	Remote socket kit 24V	881374	
26-2	Control pack 12V	883129	1
	Control pack 24V	883130	
27	Brake clutch base	881100	1
28	Clevis hook	881995	1

Winch Assembly



Introduction

► Feature

Line pull:	4,082 kg / 9,000 lb wire rope first layer
Wire rope:	8.3 mm × 30.5 m (21/64" × 100') galvanized aircraft A7 × 19
Brake:	Patented cone brake holds full load
Clutch:	Turn the T-handle for rapid wire rope payout
Control:	Handheld pendant switch to power the winch

► Unpacking

• Winch assembly.....	1 pc
• Control box.....	1 pc
• Remote control.....	1 pc
• Wire rope with clevis hook.....	1 pc
• Roller fairlead.....	1 pc
• 1.8 m (6') 2 gauge battery lead.....	1 pc

► Read this manual carefully

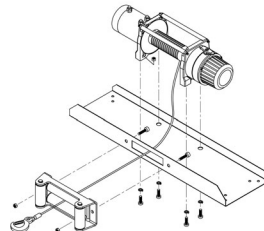
You should carefully read and understand this manual before operating it. Careless winch operation may result in personal injury hazards or property damage.

Installation

Before using the winch, make sure all electrical components have no corrosion or damaged; the environment should be clear and dry.

► Winch and roller fairlead mountings

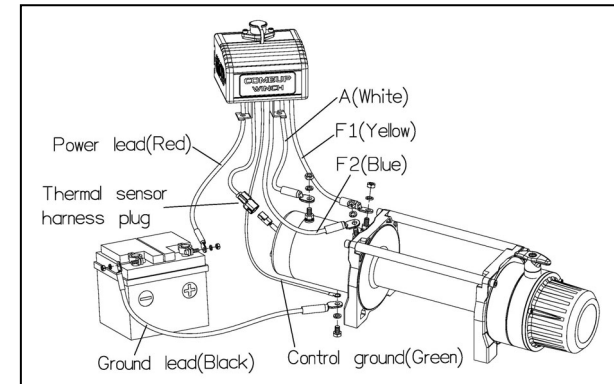
- It is very important that the winch will be mounted on a flat and hard surface of mounting channel in order to make sure the motor, drum and gearbox housing are aligned correctly.
- Roller fairlead does not mount to the winch directly.
- The wire rope shall be wound in an under-wound orientation only.



- Four (4) M10 x 1.50 pitch 10.9 grade with 63.8 N-m torque settings (maximum) high tensile steel bolts must be used in order to sustain the loads imposed on the winch mounting.
- Two (2) M12 x 1.75 pitch 8.8 grade with 76 N-m torque settings (maximum) high tensile steel bolts must be used for fastening the roller fairlead into the mounting channel.

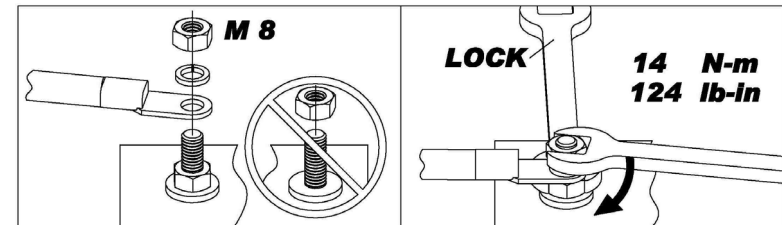
► Wiring Diagram

- Connect thermal sensor harness plug, control ground, and cable A/F1/F2 to the motor.
- Attach the ground lead firmly to the negative (–) battery terminal and power lead to the positive (+) battery terminal. The voltage drop for the winch motor must not exceed 10% of the nominal voltage of 12/24V DC.



► Nut fastening for motor & contactor

1. Holding the lower nut on the stub and fastening the upper nut clockwise.
2. The torque setting for nut is 14 N-m/124 lb-in.



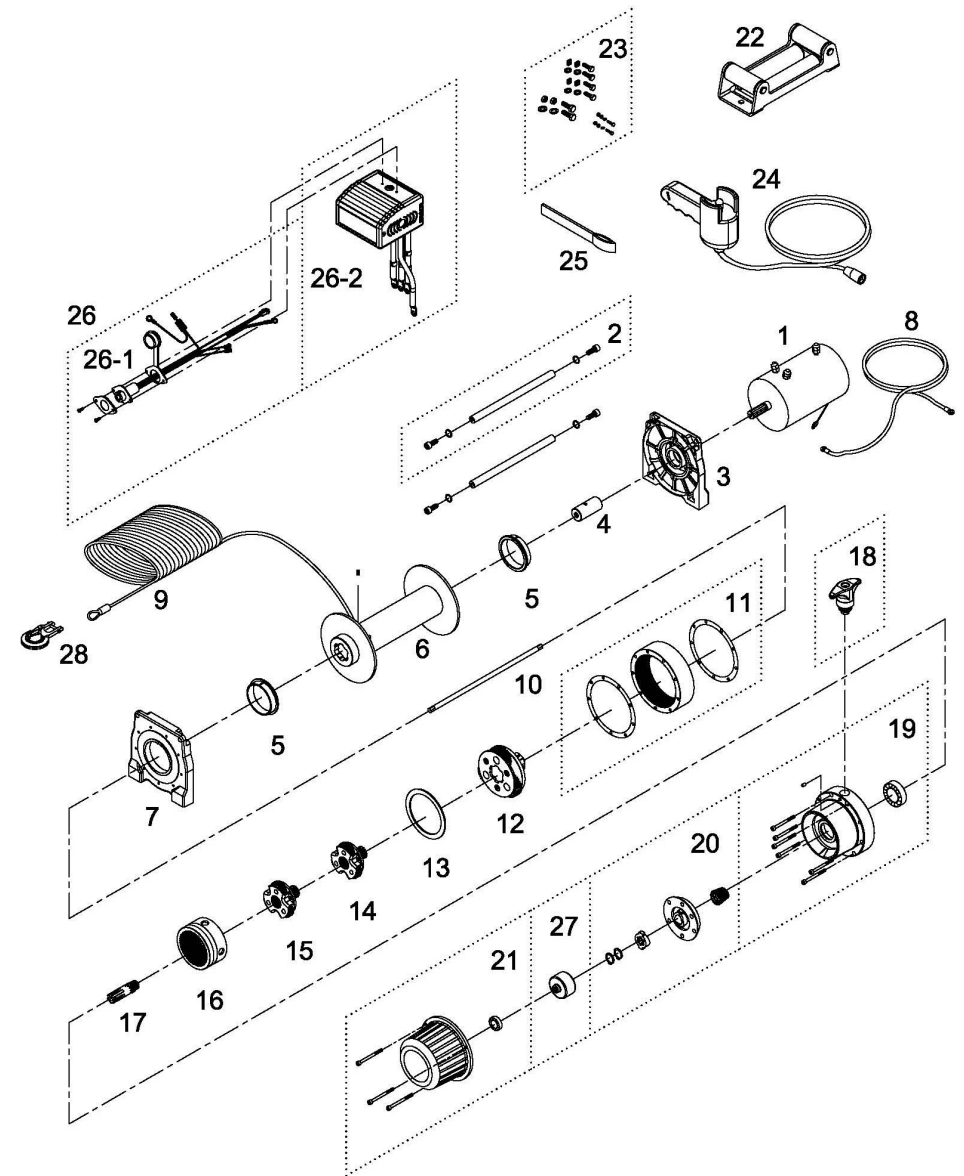
Warning

- The winch is not intended to be used in any manner for the movement or lifting of personnel.
- The rated line pull shown is based on the first layer of rope on the drum.
- The rope winding on the drum shall remain 5 wraps from the drum.

Parts List

Item No.	Description	Part No.	Qty
1	Motor 12V	882153	1
	Motor 24V	883126	
2	Tie bar kit	880003	2
	Tie bar kit for PN:856345	882546	
3	Motor support rack	881779	1
4	Motor coupling	880005	1
5	Drum bushing	880006	2
6	Drum kit	881101	1
7	Gearbox support rack	881780	1
8	Grounding lead	880009	1
9	Wire rope	881986	1
10	1 st shaft	880011	1
11	3 rd ring gear kit	881781	1
12	3 rd stage carrier	880013	1
13	3 rd bushing	880014	1
14	2 nd stage carrier	880015	1
15	1 st stage carrier	880016	1
16	1 st & 2 nd ring gear	880017	1
17	1 st pinion kit	880018	1
18	Clutch kit	881303	1
19	Gear box kit	881782	1
20	Cone brake disc kit	880021	1
21	Brake cover kit	881783	1
22	Roller fairlead	880023	1
23	Mounting hardware	880024	1
24	Remote control	880126	1
25	Handsaver strap	880026	1
26	Control box 12V	881164	1
	Control box 24V	881165	
26-1	Remote socket kit 12V	881373	1
	Remote socket kit 24V	881374	
26-2	Control pack 12V	881400	1
	Control pack 24V	881401	
27	Brake clutch base	881100	1
28	Clevis hook	881995	1

Winch Assembly



Introduction

► Feature

Line pull:	2,722 kg / 6,000 lb wire rope first layer
Synthetic rope:	8 mm × 24.4 m (5/16" × 80') synthetic rope
Brake:	Patented cone brake holds full load
Clutch:	Turn the T-handle for rapid wire rope payout
Control:	Handheld pendant switch powers the winch

► Unpacking

- Winch assembly..... 1 pc
- Control box w/ handle..... 1 pc
- Remote control..... 1 pc
- Synthetic rope with clevis hook..... 1 pc
- Hawse fairlead..... 1 pc
- 2" rear receiver w/quick connector wiring kit..... 1 pc

► Read this manual carefully

You should carefully read and understand this manual before operating it. Careless winch operation may result in personal injury hazards or property damage.

► Information requesting or parts ordering

Please specify the followings information:

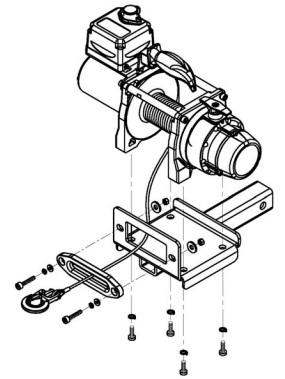
- Winch PN
- Part description
- Quantity for each part
- Serial number
- Replacement part number

Installation

Before using the winch, make sure all electrical components have no corrosion or damaged; the environment should be clear and dry.

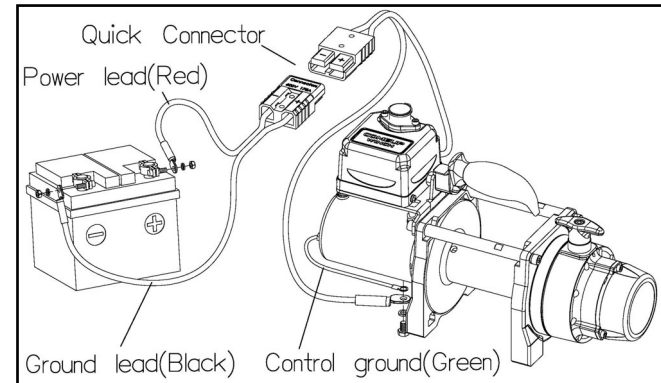
► Winch and hawse fairlead mountings

- It is very important that the winch will be mounted on a flat and hard surface of mounting channel in order to make sure the motor, drum and gearbox housing are aligned correctly.
- Hawse fairlead does not mount to winch directly.
- The synthetic rope shall be wound in an under-wound orientation only.
- Four (4) M10 x 1.50 pitch 8.8 grade high tensile steel bolts must be used in order to sustain the loads imposed on the winch mounting.
- Two (2) M8 x 1.0 pitch 8.8 grade high tensile steel bolts must be used for fastening the hawse fairlead into the mounting channel.



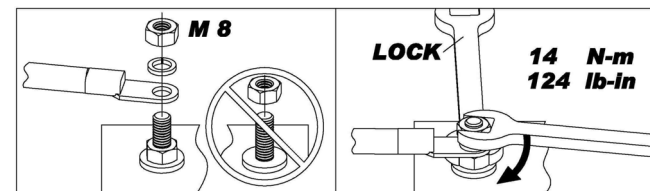
► Wiring Diagram

- Connect control ground, and cable A/F1/F2 to the motor.
- Attach the ground lead firmly to the negative (-) battery terminal and power lead to the positive (+) battery terminal. The voltage drop for the winch motor must not exceed 10% of the nominal voltage of 12V DC.



► Nut fastening for motor & contactor

1. Holding the lower nut on the stub and fastening the upper nut clockwise.
2. The torque setting for nut is 14 N-m/124 lb-in.



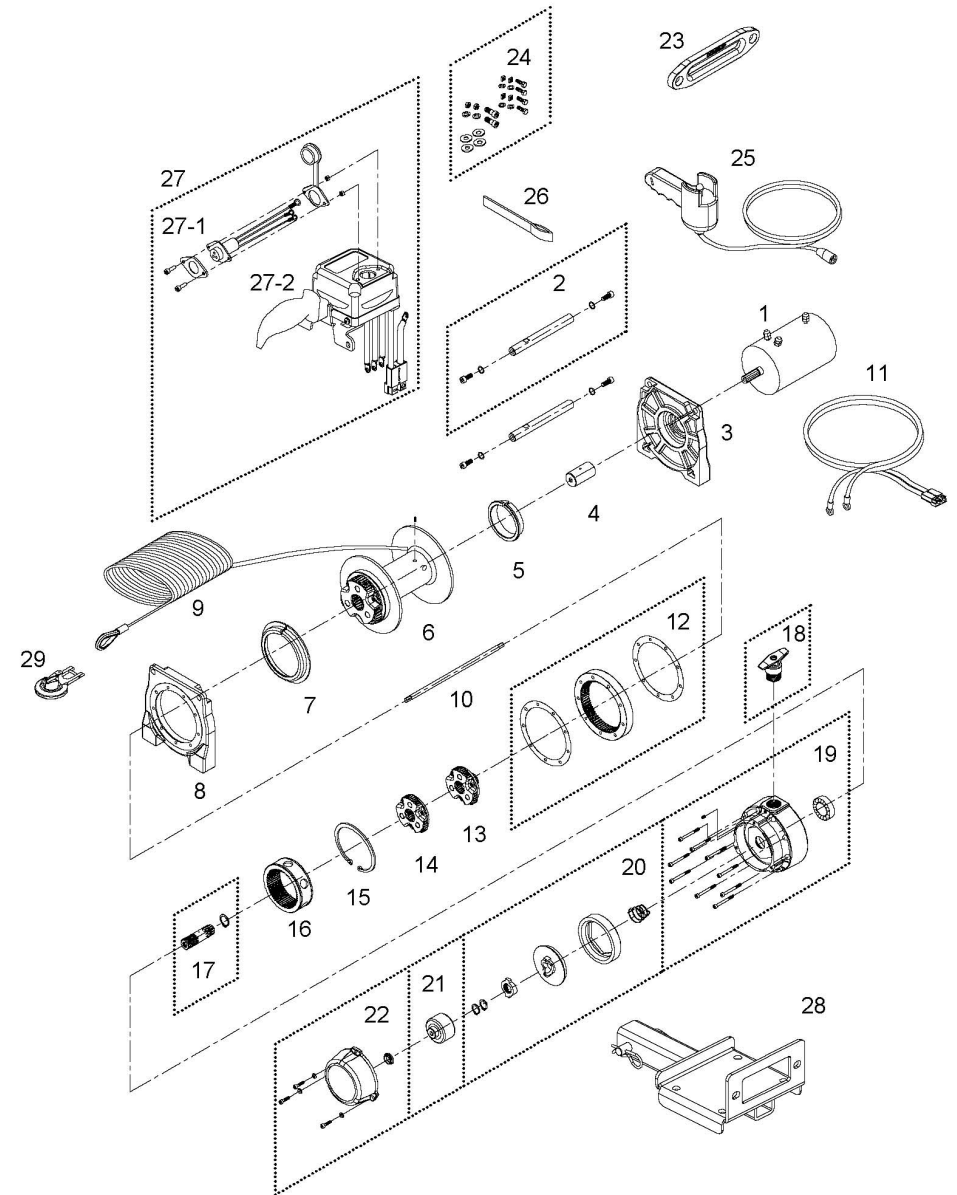
Warning

- The winch is not intended to be used in any manner for the movement or lifting of personnel.
- The rated line pull shown is based on the first layer of rope on the drum.
- The rope winding on the drum shall remain 10 wraps from the drum.

Parts List

Item No.	Description	Part No.	Qty
1	Motor 12V	881505	1
2	Tie bar kit	882256	2
3	Motor support rack	880077	1
4	Motor coupling	880078	1
5	Drum bushing	880006	1
6	Drum kit	880080	1
7	Drum bushing B	880081	1
8	Gearbox support rack	880082	1
9	Synthetic rope	883274	1
10	1 st shaft	880084	1
11	Power lead	882252	1
12	3 rd ring gear kit	880086	1
13	2 nd stage carrier	880087	1
14	1 st stage carrier	880088	1
15	Retaining ring	880089	1
16	1 st & 2 nd ring gear	880090	1
17	1 st pinion kit	880091	1
18	Clutch kit	880092	1
19	Gear box kit	880093	1
20	Cone brake disc kit	880094	1
21	Brake clutch base	881099	1
22	Brake cover kit	880095	1
23	Hawse fairlead	882152	1
24	Mounting hardware	882370	1
25	Remote control	880025	1
26	Handsaver strap	880026	1
27	Control box 12V	882242	1
27-1	Remote socket kit	880029	1
27-2	Control pack 12V	882243	1
28	2" rear receiver	883713	1
29	Clevis hook	881995	1

Winch Assembly



Introduction

► Feature

Line pull:	2,722 kg / 6,000 lb wire rope first layer
Wire rope:	7.1 mm × 24.4 m (9/32" × 80') galvanized aircraft A7 × 19
Brake:	Patented cone brake holds full load
Clutch:	Turn the T-handle for rapid wire rope payout
Control:	Handheld pendant switch powers the winch

► Unpacking

- Winch assembly..... 1 pc
- Control box 1 pc
- Remote control..... 1 pc
- Wire rope with clevis hook..... 1 pc
- Roller fairlead..... 1 pc
- 1.8 m (6') 6 gauge battery lead..... 1 pc

► Read this manual carefully

You should carefully read and understand this manual before operating it. Careless winch operation may result in personal injury hazards or property damage.

► Information requesting or parts ordering

Please specify the followings information:

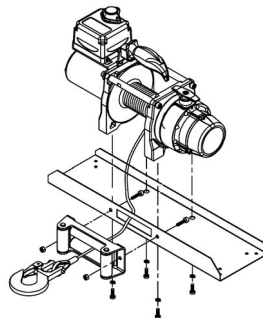
- | | |
|--------------------------|---------------------------|
| • Winch PN | • Serial number |
| • Part description | • Replacement part number |
| • Quantity for each part | |

Installation

Before using the winch, make sure all electrical components have no corrosion or damaged; the environment should be clear and dry.

► Winch and roller fairlead mountings

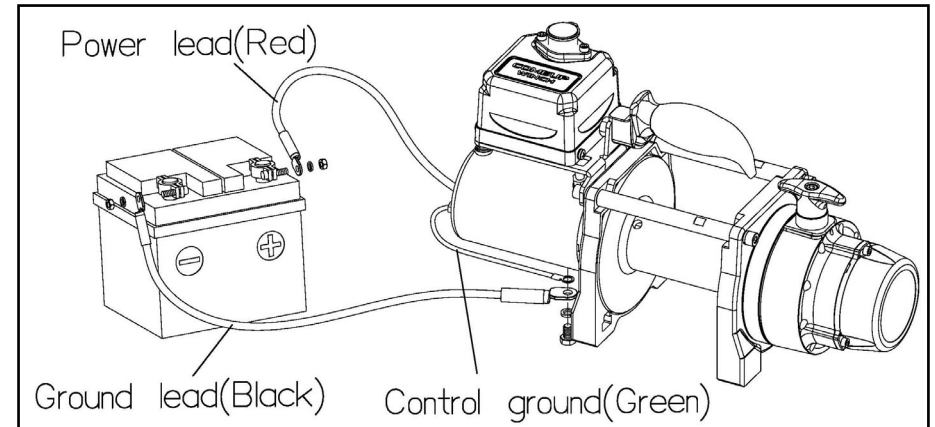
- It is very important that the winch will be mounted on a flat and hard surface of mounting channel in order to



- make sure the motor, drum and gearbox housing are aligned correctly.
- Roller fairlead does not mount to winch directly.
- The wire rope shall be wound in an under-wound orientation only.
- Four (4) M10 x 1.50 pitch 10.9 grade high tensile steel bolts must be used in order to sustain the loads imposed on the winch mounting.
- Two (2) M10 x 1.50 pitch 10.9 grade high tensile steel bolts must be used for fastening the roller fairlead into the mounting channel.

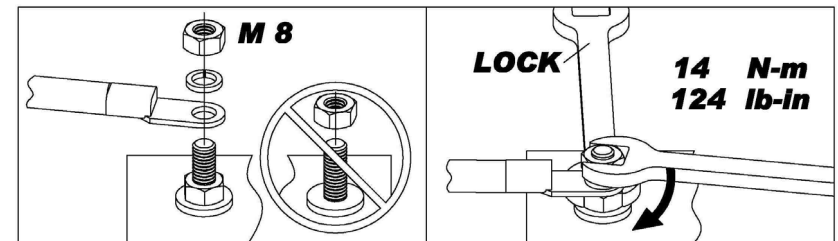
► Wiring Diagram

- Connect control ground, and cable A/F1/F2 to the motor.
- Attach the ground lead firmly to the negative (-) battery terminal and power lead to the positive (+) battery terminal. The voltage drop for the winch motor must not exceed 10% of the nominal voltage of 12V DC.



► Nut fastening for motor & contactor

1. Holding the lower nut on the stub and fastening the upper nut clockwise.
2. The torque setting for nut is 14 N-m/124 lb-in.



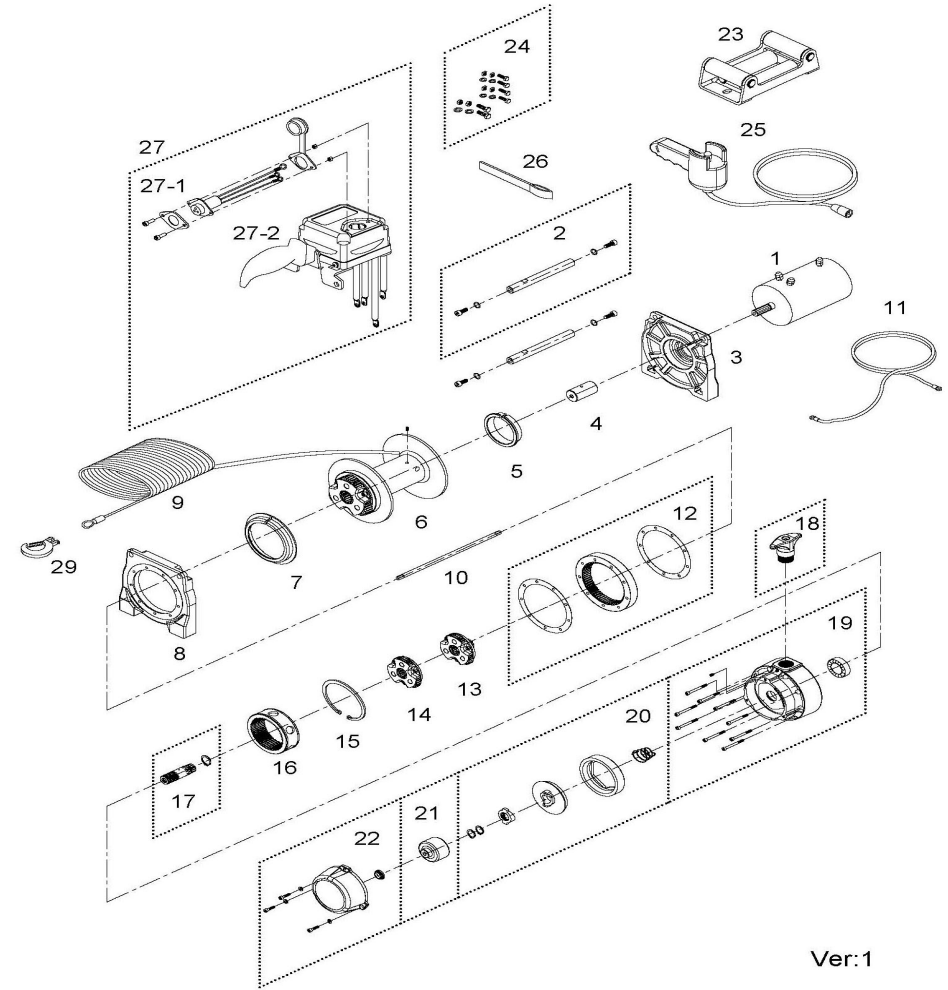
Warning

- The winch is not intended to be used in any manner for the movement or lifting of personnel.
- The rated line pull shown is based on the first layer of rope on the drum.
- The rope winding on the drum shall remain 5 wraps from the drum.

Parts List

Item No.	Description	Part No.	Qty
1	Motor 12V	881505	1
2	Tie bar kit	882256	2
3	Motor support rack	880077	1
4	Motor coupling	880078	1
5	Drum bushing	880006	1
6	Drum kit	880080	1
7	Drum bushing B	880081	1
8	Gearbox support rack	880082	1
9	Wire rope	882367	1
10	1 st shaft	880084	1
11	Grounding lead	882040	1
12	3 rd ring gear kit	880086	1
13	2 nd stage carrier	880087	1
14	1 st stage carrier	880088	1
15	Retaining ring	880089	1
16	1 st & 2 nd ring gear	880090	1
17	1 st pinion kit	880091	1
18	Clutch kit	880092	1
19	Gear box kit	880093	1
20	Cone brake disc kit	880094	1
21	Brake clutch base	881099	1
22	Brake cover kit	880095	1
23	Roller fairlead	880096	1
24	Mounting hardware	880097	1
25	Remote control	880025	1
26	Handsaver strap	880026	1
27	Control box 12V	882265	1
27-1	Remote socket kit	880029	1
27-2	Control pack 12V	882266	1
29	Clevis hook	881995	1

Winch Assembly



Ver:1

Алматы (7273)495-231
 Ангарск (3955)60-70-56
 Архангельск (8182)63-90-72
 Астрахань (8512)99-46-04
 Барнаул (3852)73-04-60
 Белгород (4722)40-23-64
 Благовещенск (4162)22-76-07
 Брянск (4832)59-03-52
 Владивосток (423)249-28-31
 Владикавказ (8672)28-90-48
 Владимир (4922)49-43-18
 Волгоград (844)278-03-48
 Вологда (8172)26-41-59
 Воронеж (473)204-51-73
 Екатеринбург (343)384-55-89

Иваново (4932)77-34-06
 Ижевск (3412)26-03-58
 Иркутск (395)279-98-46
 Казань (843)206-01-48
 Калининград (4012)72-03-81
 Калуга (4842)92-23-67
 Кемерово (3842)65-04-62
 Киров (8332)68-02-04
 Коломна (4966)23-41-49
 Кострома (4942)77-07-48
 Краснодар (861)203-40-90
 Красноярск (391)204-63-61
 Курск (4712)77-13-04
 Курган (3522)50-90-47
 Липецк (4742)52-20-81

Магнитогорск (3519)55-03-13
 Москва (495)268-04-70
 Мурманск (8152)59-64-93
 Набережные Челны (8552)20-53-41
 Нижний Новгород (831)429-08-12
 Новокузнецк (3843)20-46-81
 Ноябрьск (3496)41-32-12
 Новосибирск (383)227-86-73
 Омск (3812)21-46-40
 Орел (4862)44-53-42
 Оренбург (3532)37-68-04
 Пенза (8412)22-31-16
 Петрозаводск (8142)55-98-37
 Псков (8112)59-10-37
 Пермь (342)205-81-47

Ростов-на-Дону (863)308-18-15
 Рязань (4912)46-61-64
 Самара (846)206-03-16
 Санкт-Петербург (812)309-46-40
 Саратов (845)249-38-78
 Севастополь (8692)22-31-93
 Саранск (8342)22-96-24
 Симферополь (3652)67-13-56
 Смоленск (4812)29-41-54
 Сочи (862)225-72-31
 Ставрополь (8652)20-65-13
 Сурут (3462)77-98-35
 Сыктывкар (8212)25-95-17
 Тамбов (4752)50-40-97
 Тверь (4822)63-31-35

Тольятти (8482)63-91-07
 Томск (3822)98-41-53
 Тула (4872)33-79-87
 Тюмень (3452)66-21-18
 Ульяновск (8422)24-23-59
 Улан-Удэ (3012)59-97-51
 Уфа (347)229-48-12
 Хабаровск (4212)92-98-04
 Чебоксары (8352)28-53-07
 Челябинск (351)202-03-61
 Череповец (8202)49-02-64
 Чита (3022)38-34-83
 Якутск (4112)23-90-97
 Ярославль (4852)69-52-93

Россия +7(495)268-04-70

Казахстан +7(7172)727-132

Киргизия +996(312)96-26-47

<https://comeup.nt-rt.ru/> || cpb@nt-rt.ru