

COMEUP WINCH

Model: **GTD-1200**

PN: 751260 12V 751321 12V 751310 12V 751350 12V 931076 12V
751375 24V 751365 24V 931050 24V

Introduction

► Feature

- Line lifting: 544 kg / 1,200 lb wire rope first layer
- Wire rope: 4.8 mm × 18.3 m (3/16" × 60") galvanized aircraft A7 × 19
- Brake: Both Mechanical cone brake and permanent motor dynamic brakes
- Control: Handheld pendant switch powers the hoist

► Unpacking

- Hoist assembly..... 1 pc
- Control box..... 1 pc
- Remote control except for PN:751310..... 1 pc
- Wire rope with clevis hook except for PN:751260..... 1 pc

► Read this manual carefully

You should carefully read and understand this manual before operating it. Careless hoist operation may result in personal injury hazards or property damage.

► Information requesting or parts ordering

Please specify the following information:

- Hoist PN
- Serial number
- Quantity for each part
- Part description
- Replacement part number

Installation

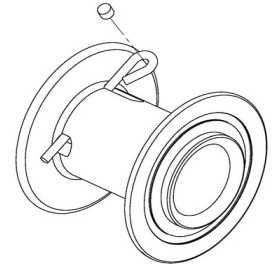
Before using the hoist, make sure all electrical components have no corrosion or damaged; the environment should be clear and dry.

► Hoist mounting

- Four (4) M10 x 30L 8.8 grade with 44 N-m torque settings (maximum) high tensile steel bolts must be used in order to sustain the loads imposed on the winch mounting.

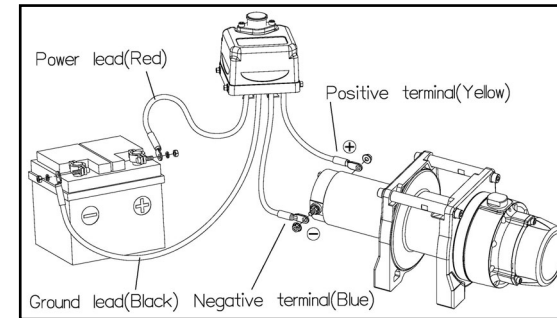
► Wire Rope Replacement

- Feed the end of the wire rope into anchor hole in the drum and make a self-circle on the anchor pocket. Insert a wedge in the self-circle and tighten the rope for securing purpose.
- Make sure the first layer of wire rope is tight and maintain a freeboard at least 1.5 x rope diameter.
- Wire rope shall be wound in an under-wound orientation only.
- To compensate for uneven spooling and the decrease in line pull capacity as the drum fills up, use as short a wire rope as practical.



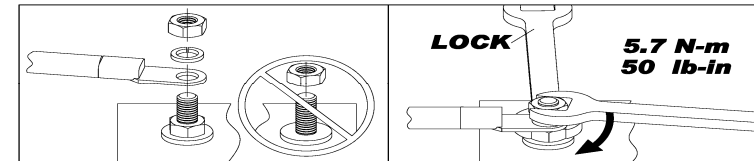
► Wiring Diagram

- Connect positive/negative terminal cables to the winch motor.
- Attach the ground lead firmly to the negative (-) battery terminal and power lead to the positive (+) battery terminal. The voltage drop for the winch motor must not exceed 10% of the nominal voltage of 12/24V DC.



► Nut fastening for motor & contactor

- Holding the lower nut on the stub and fastening the upper nut clockwise.
- The torque setting for nut is 5.7N-m / 50 lb-in.



Алматы (7273)495-231
Ангарск (3955)60-70-56
Архангельск (8182)63-90-72
Астрахань (8512)99-46-04
Барнаул (3852)73-04-60
Белгород (4722)40-23-64
Благовещенск (4162)22-76-07
Брянск (4832)59-03-52
Владивосток (423)249-28-31
Владикавказ (8672)28-90-48
Владимир (4922)49-43-18
Волгоград (844)278-03-48
Вологда (8172)26-41-59
Воронеж (473)204-51-73
Екатеринбург (343)384-55-89

Иваново (4932)77-34-06
Ижевск (3412)26-03-58
Иркутск (395)279-98-46
Казань (843)206-01-48
Калининград (4012)72-03-81
Калуга (4842)92-23-67
Кемерово (3842)65-04-62
Киров (8332)68-02-04
Коломна (4966)23-41-49
Кострома (4942)77-07-48
Краснодар (861)203-40-90
Красноярск (391)204-63-61
Курск (4712)77-13-04
Курган (3522)50-90-87
Липецк (4742)52-20-81

Россия +7(495)268-04-70

Магнитогорск (3519)55-03-13
Москва (495)268-04-70
Мурманск (8152)59-64-93
Набережные Челны (8552)20-53-41
Нижний Новгород (831)429-08-12
Новокузнецк (3843)20-46-81
Ноябрьск (3496)41-32-12
Новосибирск (383)227-86-73
Омск (3812)21-46-40
Орел (4862)44-53-42
Оренбург (3532)37-68-04
Пенза (8412)22-31-16
Петрозаводск (8142)55-98-37
Псков (8112)59-10-37
Пермь (342)205-81-47

Казахстан +7(7172)727-132

Ростов-на-Дону (863)308-18-15
Рязань (4912)46-61-64
Самара (846)206-03-16
Санкт-Петербург (812)309-46-40
Саратов (845)249-38-78
Севастополь (8692)22-31-93
Саранск (8342)22-96-24
Симферополь (3652)67-13-56
Смоленск (4812)29-41-54
Сургут (3462)77-98-35
Сыктывкар (8212)25-95-17
Тамбов (4752)50-40-97
Тверь (4822)63-31-35

Киргизия +996(312)96-26-47

Тольятти (8482)63-91-07
Томск (3822)98-41-53
Тула (4872)33-79-87
Тумень (3452)66-21-18
Ульяновск (8422)24-23-59
Улан-Уда (3012)59-97-51
Уфа (347)229-48-12
Хабаровск (4212)92-98-04
Чебоксары (8352)28-53-07
Челябинск (351)202-03-61
Череповец (8202)49-02-64
Чита (3022)38-34-83
Якутск (4112)23-90-97
Ярославль (4852)69-52-93

- Don't try to move obstructed loads and side-pull of load is not allowed
- The rope winding on the drum shall remain 5 wraps from the drum.

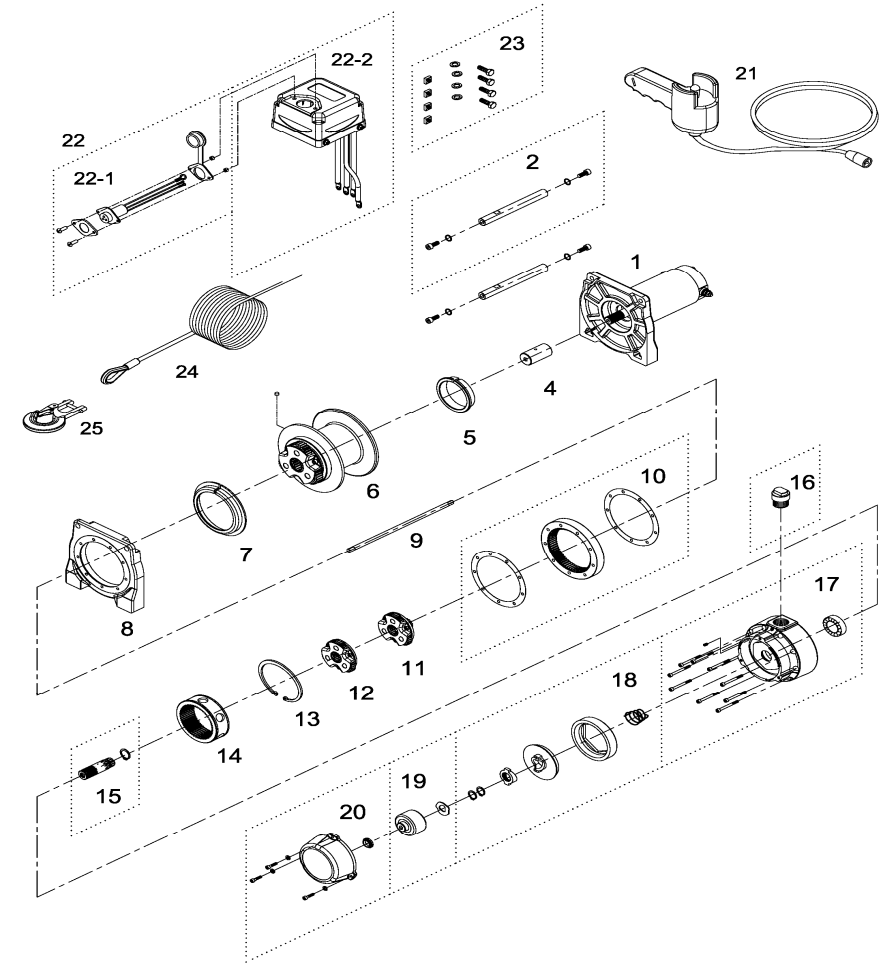
Performance Data

Lifting Load	Line Speed				Amp. Draw	Percentage Duty Cycle
	mpm		fpm			
kg / lb	12V	24V	12V	24V	12 / 24V	min / 10 min
No load	7.4	5.9	24.3	19.4	30 / 15	2.5
136 / 300	6.9	5.7	22.6	18.7	55 / 19	2.3
272 / 600	6.4	5.5	21.0	18.0	75 / 25	2.0
408 / 900	5.9	5.2	19.4	17.1	95 / 36	1.8
544 / 1,200	5.5	5.0	18.0	16.4	130 / 50	1.5

Parts List

Item No.	Description	Part No.	Qty
1	Motor 12V	884313	1
	Motor 24V	884314	
2	Tie bar kit	881427	2
4	Motor coupling	880078	1
5	Drum bushing A	880006	1
6	Drum kit	882312	1
7	Drum bushing B	880081	1
8	Gearbox support rack	882419	1
9	1 st shaft	881221	1
10	3 rd ring gear kit	882420	1
11	2 nd stage carrier	880087	1
12	1 st stage carrier	880088	1
13	Retaining ring	880089	1
14	1 st & 2 nd ring gear	880090	1
15	1 st pinion kit	880091	1
16	Tap screw	881423	1
17	Gear box kit	882421	1
18	Cone brake disc kit	883321	1
19	Brake clutch base	883322	1
20	Brake cover kit	882422	1
21	Remote control except for PN:751310	880025	1
22	Control box 12V	882313	1
	Control box 24V	882314	
22-1	Remote socket kit	880029	1
22-2	Control pack 12V	882315	1
	Control pack 24V	882316	
23	Mounting hardware	882539	1
24	Wire rope (PN:751260 Not included)	882410	1
25	Clevis hook (PN:751260 Not included)	881995	1

Hoist Assembly



Алматы (7273)495-231
 Ангарск (3955)60-70-56
 Архангельск (8182)63-90-72
 Астрахань (8512)99-46-04
 Барнаул (3852)73-04-60
 Белгород (4722)40-23-64
 Благовещенск (4162)22-76-07
 Брянск (4832)59-03-52
 Владивосток (423)249-28-31
 Владикавказ (8672)28-90-48
 Владимир (4922)49-43-18
 Волгоград (844)278-03-48
 Вологда (8172)26-41-59
 Воронеж (473)204-51-73
 Екатеринбург (343)384-55-89

Иваново (4932)77-34-06
 Ижевск (3412)26-03-58
 Иркутск (395)279-98-46
 Казань (843)206-01-48
 Калининград (4012)72-03-81
 Калуга (4842)92-23-67
 Кемерово (3842)65-04-62
 Киров (8332)68-02-04
 Коломна (4966)23-41-49
 Кострома (4942)77-07-48
 Краснодар (861)203-40-90
 Красноярск (391)204-63-61
 Курск (4712)77-13-04
 Курган (3522)50-90-47
 Липецк (4742)52-20-81

Россия +7(495)268-04-70

Магнитогорск (3519)55-03-13
 Москва (495)268-04-70
 Мурманск (8152)59-64-93
 Набережные Челны (8552)20-53-41
 Нижний Новгород (831)429-08-12
 Новокузнецк (3843)20-46-81
 Ноябрьск (3496)41-32-12
 Новосибирск (383)227-86-73
 Омск (3812)21-46-40
 Орел (4862)44-53-42
 Оренбург (3532)37-68-04
 Пенза (8412)22-31-16
 Петрозаводск (8142)55-98-37
 Псков (8112)59-10-37
 Пермь (342)205-81-47

Казахстан +7(7172)727-132

Ростов-на-Дону (863)308-18-15
 Рязань (4912)46-61-64
 Самара (846)206-03-16
 Санкт-Петербург (812)309-46-40
 Саратов (845)249-38-78
 Севастополь (8692)22-31-93
 Саранск (8342)22-96-24
 Симферополь (3652)67-13-56
 Смоленск (4812)29-41-54
 Сочи (862)225-72-31
 Ставрополь (8652)20-65-13
 Сургут (3462)77-98-35
 Сыктывкар (8212)25-95-17
 Тамбов (4752)50-40-97
 Тверь (4822)63-31-35

Киргизия +996(312)96-26-47

Тольятти (8482)63-91-07
 Томск (3822)98-41-53
 Тула (4872)33-79-87
 Тюмень (3452)66-21-18
 Ульяновск (8422)24-23-59
 Улан-Удэ (3012)59-97-51
 Уфа (347)229-48-12
 Хабаровск (4212)92-98-04
 Чебоксары (8352)28-53-07
 Челябинск (351)202-03-61
 Череповец (8202)49-02-64
 Чита (3022)38-34-83
 Якутск (4112)23-90-97
 Ярославль (4852)69-52-93

<https://comeup.nt-rt.ru/> || cpb@nt-rt.ru