

OMR-160 150 bar PN: 682150 Std. drum 682474 Long drum	OMP-160 175 bar PN: 682030 Std. Drum 682038 Std. drum 682169 Long drum
--	--

Introduction

► Feature

Line pull (1 st layer):	9,070 kg / 20,000 lb
Line speed (1 st layer):	7.1 mpm (23 fpm) at 60 l / min (15.9 g / min)
Operation pressure:	150 bar (2,175 psi) 175 bar (2,540 psi)
Brake:	Multi-disc brake and counterbalance valve providing full 100% braking
Clutch (freespooling):	output shaft disengaged
Recommended wire rope:	14 mm x 43 m (9/16" x 141'),for Std. drum 14 mm x 80 m (9/16" x 262'),for Long drum 1,960 N/mm ² breaking strength of 137 kN is required for SAE ratings 16 mm x 30 m (5/8" x 98'), for Std. drum, 16 mm x 55 m (5/8" x 180'),for Long drum 1,960 N/mm ² breaking strength of 179 kN is required for EN-14492-1 ratings
Hydraulic system:	PTO/power take off unit driven pump

► Unpacking

• Winch assembly.....	1pc
• Roller fairlead.....	1pc
• Counterbalance valve.....	1pc
• Cable tensioner.....	1pc

► Read this manual carefully

You should carefully read and understand this manual before operating it. Careless winch operation may result in personal injury hazards or property damage.

Алматы (7273)495-231
Ангарск (3955)60-70-56
Архангельск (8182)63-90-72
Астрахань (8512)95-46-04
Барнаул (3852)73-04-60
Белгород (4722)40-23-64
Благовещенск (4162)22-76-07
Брянск (4832)59-03-52
Владивосток (423)249-28-31
Владикавказ (8672)28-90-48
Владимир (4922)49-43-18
Волгоград (841)278-03-48
Вологда (8172)26-41-59
Воронеж (473)204-51-73
Екатеринбург (343)384-55-89

Иваново (4932)77-34-06
Ижевск (3412)26-03-58
Иркутск (395)279-98-46
Казань (843)206-01-48
Калининград (4012)72-03-81
Калуга (4842)92-23-67
Кемерово (3942)65-04-62
Киров (8332)68-02-04
Колпна (4966)23-41-49
Кострома (4942)77-07-48
Краснодар (861)203-40-90
Кострома (4942)77-07-48
Курск (4712)77-13-04
Курган (3522)50-90-47
Липецк (4742)52-20-81

Магнитогорск (3519)55-03-13
Москва (495)268-04-70
Мурманск (8152)59-64-93
Набережные Челны (8552)20-53-41
Нижегород (831)429-08-12
Новокузнецк (3843)20-46-81
Новосибирск (383)227-86-73
Омск (3812)21-46-40
Орел (4862)44-53-42
Оренбург (3532)37-68-04
Пенза (8412)22-31-16
Петрозаводск (8142)55-98-37
Псков (8112)59-10-37
Пермь (342)205-81-47

Ростов-на-Дону (863)308-18-15
Рязань (4912)46-61-64
Самара (846)206-03-16
Санкт-Петербург (812)309-46-40
Саратов (845)249-38-78
Севастополь (8692)22-31-93
Саранск (8342)22-96-24
Симферополь (3652)67-13-56
Смоленск (4812)29-41-54
Сочи (862)225-72-31
Ставрополь (8652)20-65-13
Сургут (3462)77-98-35
Сыктывкар (8212)25-95-17
Тамбов (4752)50-40-97
Тверь (4822)63-31-35

Тольятти (8482)63-91-07
Томск (3822)98-41-53
Тула (4872)33-79-87
Ульяновск (8422)24-23-59
Улан-Удэ (3012)59-97-51
Уфа (347)229-48-12
Хабаровск (4212)92-98-04
Чебоксары (8352)28-53-07
Челябинск (351)202-03-61
Череповец (8202)49-02-64
Чита (3022)38-34-83
Якутск (4112)23-90-97
Ярославль (4852)69-52-93

Россия +7(495)268-04-70

Казахстан +7(7172)727-132

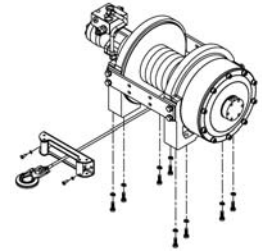
Киргизия +996(312)96-26-47

Installation

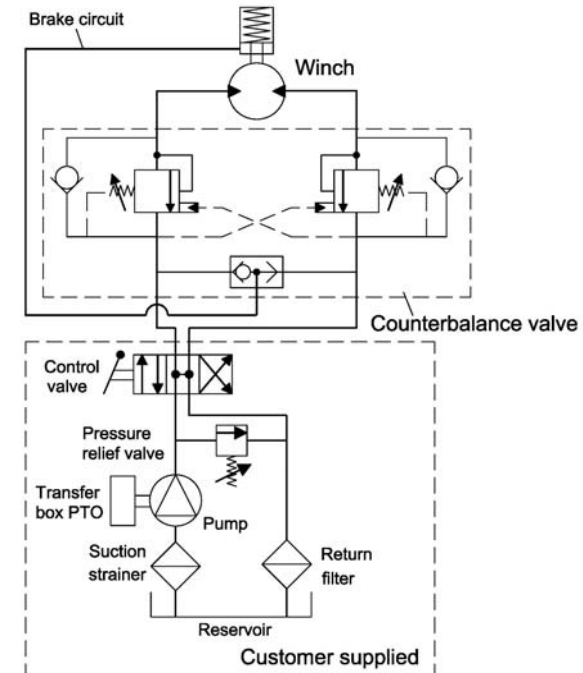
Before using the winch, make sure all components have no corrosion or damaged; the environment should be clear and dry.

► Mounting

- Winch shall be mounted on a flat and hard surface.
- Winch should be mounted as closed to center and as perpendicular as possible to the direction of the line pull.
- Wire rope shall be wound in an under-wound orientation only.
- Eight (8) M16 x 40, 12.9 grade high tensile steel bolts must be used in order to sustain the loads imposed on the winch.
- Two (2) M10 X 25, 12.9 grade high tensile steel bolts must be used to fasten the roller fairlead to the mounting channel.
- It is always preferred to use both tie bars in the final installed configuration.
- If there is a rope pileup on one end of the drum, reverse the winch to relieve the load and move your anchor point further to the center of the vehicle. Then you can rewind for a neat layer of the rope.



► Hydraulic System



(Powered by PTO / power take off unit driven pump)

The installation of the counterbalance valve supplied is required for 100% braking

Warning

- This winch shall only be used for vehicle recovery or for pulling and lowering boats off trailers.
- The rated line pull and speed are based on the first layer of rope on the drum.
- The rope winding on the drum shall remain 5 wraps from the drum.

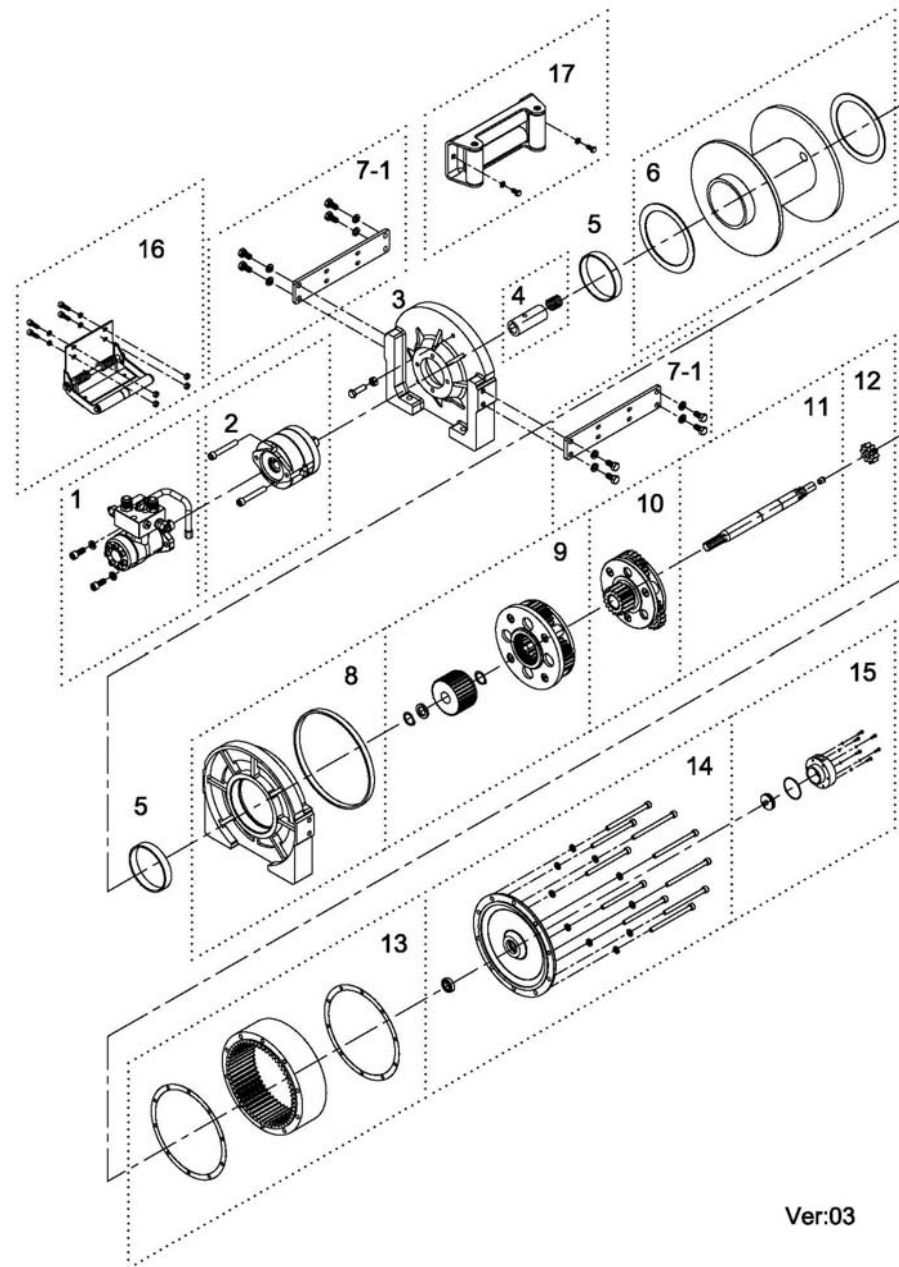
Warranty

Comeup Industries Inc. takes the responsibility for all parts and components to be free from defects in materials and workmanship appearing under normal use for one year from the date of purchase.

Parts List

Item No.	Description	Part No.	Qty
1	Hydraulic motor kit, OMP-160	882186	1
	Hydraulic motor kit, OMR-160	882181	
2	Multi-disc brake kit	881971	1
3	Motor support rack	882142	1
4	Motor coupling kit	881973	1
5	Drum bushing	880187	2
6	Drum kit, Std. drum	882143	1
	Drum kit, Long drum	882182	
7-1	Tie bar kit, Std. drum	881975	2
	Tie bar kit, Long drum	882189	
8	Gearbox support rack kit	882144	1
9	2 nd stage carrier	882145	1
10	1 st stage carrier	882146	1
11	1 st shaft kit, Std. drum	882147	1
	1 st shaft kit, Long drum	882183	
12	1 st gear	882052	1
13	1 st & 2 nd ring gear kit	882148	1
14	Gearbox rear cover kit	882149	1
15	Air inlet cover kit	881982	1
16	Cable tensioner, Std. drum	881983	1
	Cable tensioner, Long drum	882195	
17	Roller fairlead, Std. drum	880160	1
	Roller fairlead, Long drum	882238	

Winch Assembly



Ver:03

Алматы (7273)495-231
 Ангарск (3955)60-70-56
 Архангельск (8182)63-90-72
 Астрахань (8512)99-46-04
 Барнаул (3852)73-04-60
 Белгород (4722)40-23-64
 Благовещенск (4162)22-76-07
 Брянск (4832)59-03-52
 Владивосток (423)249-28-31
 Владикавказ (8672)28-90-48
 Владимир (4922)49-43-18
 Волгоград (844)278-03-48
 Вологда (8172)26-41-59
 Воронеж (473)204-51-73
 Екатеринбург (343)384-55-89

Иваново (4932)77-34-06
 Ижевск (3412)26-03-58
 Иркутск (395)279-98-46
 Казань (843)206-01-48
 Калининград (4012)72-03-81
 Калуга (4842)92-23-67
 Кемерово (3842)65-04-62
 Киров (8332)68-02-04
 Коломна (4966)23-41-49
 Кострома (4942)77-07-48
 Краснодар (861)203-40-90
 Красноярск (391)204-63-61
 Курск (4712)77-13-04
 Курган (3522)50-90-47
 Липецк (4742)52-20-81

Россия +7(495)268-04-70

Магнитогорск (3519)55-03-13
 Москва (495)268-04-70
 Мурманск (8152)59-64-93
 Набережные Челны (8552)20-53-41
 Нижний Новгород (831)429-08-12
 Новокузнецк (3843)20-46-81
 Ноябрьск (3496)41-32-12
 Новосибирск (383)227-86-73
 Омск (3812)21-46-40
 Оренбург (4862)44-53-42
 Оренбург (3532)37-68-04
 Красноярск (391)204-63-61
 Курск (4712)77-13-04
 Петрозаводск (8142)55-98-37
 Псков (8112)59-10-37
 Пермь (342)205-81-47

Казахстан +7(7172)727-132

Ростов-на-Дону (863)308-18-15
 Рязань (4912)46-61-64
 Самара (846)206-03-16
 Санкт-Петербург (812)309-46-40
 Саратов (845)249-38-78
 Севастополь (8692)22-31-93
 Саранск (8342)22-96-24
 Симферополь (3652)67-13-56
 Смоленск (4812)29-41-54
 Сочи (862)225-72-31
 Ставрополь (8652)20-65-13
 Сургут (3462)77-96-35
 Сыктывкар (8212)25-95-17
 Тамбов (4752)50-40-97
 Тверь (4822)63-31-35

Киргизия +996(312)96-26-47

Тольятти (8482)63-91-07
 Томск (3822)98-41-53
 Тула (4872)33-79-87
 Тюмень (3452)66-21-18
 Ульяновск (8422)24-23-59
 Улан-Удэ (3012)59-97-51
 Уфа (347)229-48-12
 Хабаровск (4212)92-98-04
 Чебоксары (8352)28-53-07
 Челябинск (351)202-03-61
 Череповец (8202)49-02-64
 Чита (3022)38-34-83
 Якутск (4112)23-90-97
 Ярославль (4852)69-52-93