

Introduction

► Feature

- Line pull: 3,856 kg / 8,500 lb wire rope first layer
- Motor: 12V: 3,430 w / 4.6 hp 24V: 1,940 w / 2.6 hp
- Line speed: **7.0 / 9.5** mpm , **23.0 / 31.2** fpm, **60A/12V**, **50A/24V** at no load
1.0 / 1.2 mpm , **3.3 / 3.9** fpm, **430A/12V**, **360A/24V** at full load
- Brake: Irreversible worm gear brake PLUS mechanism ratchet wheel brake providing 100% braking
- Clutch: Turn the mechanism lever for rapid wire rope payout
8.0 mm × 45 m (5/16" × 150') galvanized aircraft A7 x 19
- Control: Handheld pendant switch powers the winch

► Unpacking

- Control box..... 1pc
- Remote control..... 1pc
- Wire rope with hook except for PN:780255 & 780345 & 780989.....1pc
- Roller fairlead..... 1pc
- Cable tensioner..... 1pc
- 1.8 m (6') 2 gauge battery leads..... 1pc

► Read this manual carefully

You should carefully read and understand this manual before operating it. Careless winch operation may result in personal injury hazards or property damage.

Алматы (7273)495-231
Ангарск (3955)60-70-56
Архангельск (8182)63-90-72
Астрахань (8512)99-46-04
Барнаул (3852)73-04-60
Белгород (4722)40-23-64
Благовещенск (4162)22-76-07
Брянск (4832)59-03-62
Владивосток (423)249-28-31
Владикавказ (8672)28-90-48
Владимир (4922)49-43-18
Волгоград (844)278-03-48
Вологда (8172)26-41-59
Воронеж (473)204-51-73
Екатеринбург (343)384-55-89

Иваново (4932)77-34-06
Ижевск (3412)26-03-58
Иркутск (395)279-98-46
Казань (843)206-01-48
Калининград (4012)72-03-81
Калуга (4842)92-23-67
Кемерово (3842)65-04-62
Киров (8332)68-02-04
Коломна (4966)23-41-49
Кострома (4942)77-07-48
Краснодар (861)203-40-90
Красноярск (391)204-63-61
Курск (4712)77-13-04
Курган (3522)50-90-47
Липецк (4742)52-20-81

Россия +7(495)268-04-70

Магнитогорск (3519)55-03-13
Москва (495)268-04-70
Мурманск (8152)59-64-93
Набережные Челны (8552)20-53-41
Нижний Новгород (831)429-08-12
Новокузнецк (3843)20-46-81
Новый Уренгой (3496)41-32-12
Новосибирск (383)227-86-73
Омск (3812)21-46-40
Орел (4862)44-53-42
Оренбург (3532)37-68-04
Пенза (8412)22-31-16
Петрозаводск (8142)55-98-37
Пермь (342)205-81-47

Казахстан +7(7172)727-132

Ростов-на-Дону (863)308-18-15
Рязань (4912)46-61-64
Самара (846)206-03-16
Санкт-Петербург (812)309-46-40
Саратов (845)249-38-78
Севастополь (8692)22-31-93
Саранск (8342)22-96-24
Симферополь (3652)67-13-56
Смоленск (4812)29-41-54
Сочи (862)225-72-31
Ставрополь (8652)20-65-13
Сургут (3462)77-98-35
Сыктывкар (8212)25-95-17
Тамбов (4752)50-40-97
Тверь (4822)63-31-35

Киргизия +996(312)96-26-47

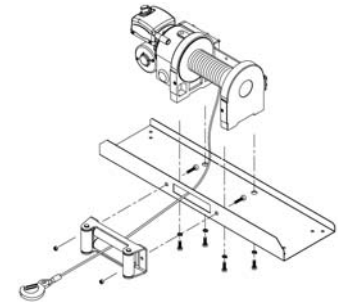
Тольятти (8482)63-91-07
Томск (3822)98-41-53
Тула (4872)33-79-87
Тюмень (3452)66-21-18
Ульяновск (8422)24-23-59
Улан-Удэ (3012)59-97-51
Уфа (347)223-48-12
Хабаровск (4212)92-98-04
Чебоксары (8352)28-53-07
Челябинск (351)202-03-61
Череповец (8202)49-02-64
Чита (3022)38-34-83
Яктык (4112)23-90-97
Ярославль (4852)69-52-93

Installation

Before using the winch, make sure all electrical components have no corrosion or damaged; the environment should be clear and dry.

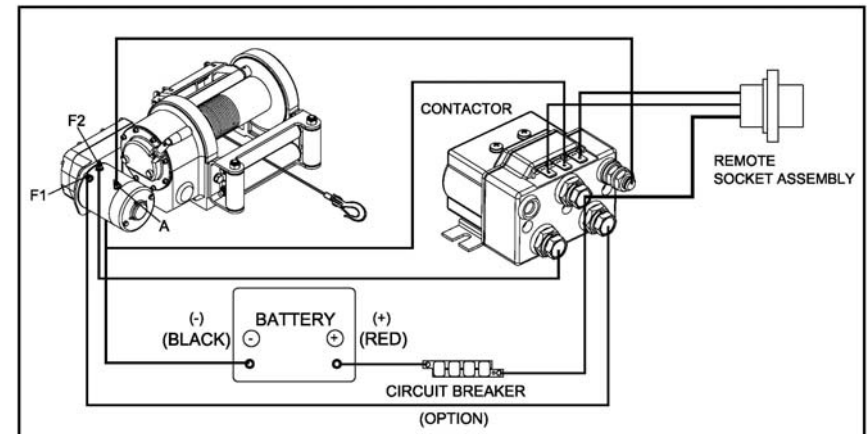
► Mounting

- It is very important that the winch will be mounted on a flat and hard surface of mounting channel in order to make sure the motor, drum and gearbox housing are aligned correctly.
- The wire rope shall be wound in an under-wound orientation only.
- Four (4) M10 x 1.50 pitch 8.8 grade w/44 N-m torque setting (maximum) high tensile steel bolts must be used in order to sustain the loads imposed on the winch mounting.
- Two (2) M12 x 1.75 pitch 8.8 grade w/76 N-m torque setting (maximum) high tensile steel bolts must be used for fastening the roller fairlead into the mounting channel.
- It is always preferred to use both tie bars in the final installed configuration.
- If there is a rope pileup on one end of the drum, reverse the winch to relieve the load and move your anchor point further to the centre of the vehicle. Then you can rewind for a neat layer of the rope.



► Wiring Diagram

Attach the black lead firmly to the negative (-) battery terminal and red lead to the positive (+) battery terminal. The voltage drop for the winch motor must not exceed 10% of the nominal voltage of 12/24V.



Warning

- The winch is not intended to be used in any manner for the movement or lifting of personnel.
- The rated line pull shown is based on the first layer of rope on the drum for the winch only · Consult the wire rope manufacturer for wire rope rating.
- The rope winding on the drum shall remain 5 wraps from the drum.

Parts List

| Item No. | Description | Part No. | Qty |
|----------|---------------------------|----------|-----|
| 1 | Motor 12V | 881778 | 1 |
| | Motor 24V | 881815 | |
| 2 | Bearing kit | 880323 | 1 |
| 3 | Gearbox base kit | 880324 | 1 |
| 4 | 2 nd gear kit | 880325 | 1 |
| 5 | 1 st shaft kit | 880326 | 1 |
| 6 | 2 nd shaft kit | 880327 | 1 |
| 7 | 1 st gear kit | 880328 | 1 |
| 8 | Gearbox upper base kit | 880329 | 1 |
| 9 | Thrust bearing kit | 880330 | 1 |
| 10 | Worm kit | 880331 | 1 |
| 11 | Thrust bearing kit | 880332 | 1 |
| 12 | Needle bearing kit | 880333 | 1 |
| 13 | Gear box kit | 880334 | 1 |
| 14 | Drum kit | 880335 | 1 |
| 15 | Support rack | 880336 | 1 |
| 16 | Worm wheel kit | 880337 | 1 |
| 17 | Output shaft kit | 880338 | 1 |
| 18 | Gearbox rear cover kit | 880339 | 1 |
| 19 | Control box 12V | 880340 | 1 |
| | Control box 24V | 880341 | |
| 20 | Grounding lead | 880009 | 1 |
| 21 | Wire rope w/hook | 881239 | 1 |
| 22 | Cable tensioner | 880358 | 1 |
| 23 | Tie bar kit | 880359 | 1 |
| 24 | Roller fairlead | 880023 | 1 |
| 25 | Remote control | 880025 | 1 |
| 26 | Mounting hardware | 880343 | 1 |
| 27 | Handsaver strap | 880026 | 1 |

Алматы (7273)495-231
 Ангарск (3955)60-70-56
 Архангельск (8182)63-90-72
 Астрахань (8512)99-46-04
 Барнаул (3852)73-04-60
 Белгород (4722)40-23-64
 Благовещенск (4162)22-76-07
 Брянск (4832)59-03-52
 Владивосток (423)249-28-31
 Владикавказ (8672)28-90-48
 Владимир (4922)49-43-18
 Волгоград (844)278-03-48
 Вологда (8172)26-41-59
 Воронеж (473)204-51-73
 Екатеринбург (343)384-55-89

Иваново (4932)77-34-06
 Ижевск (3412)26-03-58
 Иркутск (395)279-98-46
 Казань (843)206-01-48
 Калининград (4012)72-03-81
 Калуга (4842)92-23-67
 Кемерово (3842)65-04-62
 Киров (8332)68-02-04
 Колмак (423)249-28-31
 Кострома (4942)77-07-48
 Краснодар (861)203-40-90
 Красноярск (391)204-63-61
 Курск (4712)77-13-04
 Курган (352)50-90-47
 Липецк (4742)52-20-81

Россия +7(495)268-04-70

Магнитогорск (3519)55-03-13
 Москва (495)268-04-70
 Мурманск (8152)59-64-93
 Набережные Челны (8552)20-53-41
 Нижний Новгород (831)429-08-12
 Новокузнецк (3843)20-46-81
 Ноябрьск (3496)41-32-12
 Новосибирск (383)227-86-73
 Омск (3812)21-46-40
 Орел (4862)44-53-42
 Оренбург (3532)37-68-04
 Пенза (8412)22-31-16
 Петрозаводск (8142)55-98-37
 Пермь (342)205-81-47

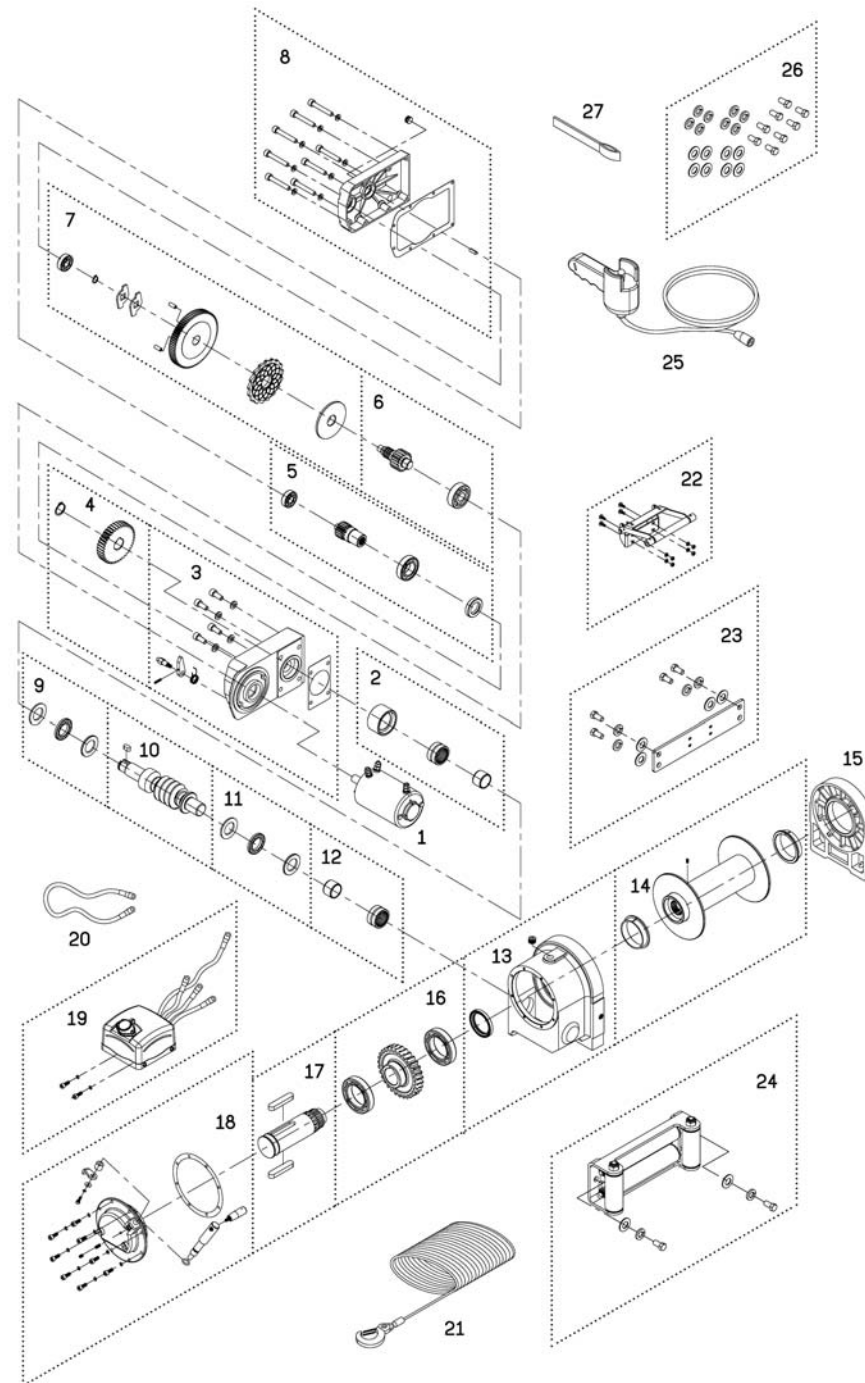
Казахстан +7(7172)727-132

Ростов-на-Дону (863)308-18-15
 Рязань (4912)46-61-64
 Самара (846)206-03-16
 Санкт-Петербург (812)309-46-40
 Саратов (845)249-38-78
 Севастополь (8692)22-31-93
 Саранск (8342)22-95-24
 Симферополь (3652)67-13-56
 Смоленск (4812)29-41-54
 Сочи (862)25-72-31
 Ставрополь (8652)20-65-13
 Сургут (3462)77-98-35
 Сыктывкар (8212)25-95-17
 Тамбов (4752)50-40-97
 Тверь (4822)63-31-35

Киргизия +996(312)96-26-47

Тольятти (8482)63-91-07
 Томск (3822)98-41-53
 Тула (4872)33-79-87
 Тюмень (3452)66-21-18
 Ульяновск (8422)24-23-59
 Улан-Удэ (3012)59-97-51
 Уфа (347)229-48-12
 Хабаровск (4212)92-98-04
 Чебоксары (8352)28-53-07
 Челябинск (351)202-03-61
 Череповец (8202)49-02-64
 Чита (3022)38-34-83
 Якутск (4112)23-90-97
 Ярославль (4852)69-52-93

Winch Assembly



<https://comeup.nt-rt.ru/> || cpb@nt-rt.ru