

Introduction

► Feature

- Line pull: 907 kg / 2,000 lb wire rope first layer
- Wire rope: 4 mm x 15.2 m (5/32" x 50') galvanized aircraft A7 x 19
- Brake: **Mechanical spring applied and permanent magnet motor dynamic brakes together**
- Clutch: Turn the shifter for rapid wire rope payout
- Control: Handlebar rocker switch to power the winch

► Unpacking

- Winch assembly..... 1 pc
- Handlebar rocker switch kit 1 pc
- 4 way roller fairlead..... 1 pc
- Wire rope with safety hook..... 1 pc
- Contactor pack 1 pc

► Read this manual carefully

You should carefully read and understand this manual before operating it. Careless winch operation may result in personal injury hazards or property damage.

► Information requesting or parts ordering

Please specify the followings information:

- Winch PN
- Part description
- Quantity for each part
- Serial number
- Replacement part number

Алматы (7273)495-231
 Ангарск (3955)60-70-56
 Архангельск (8182)63-90-72
 Астрахань (8512)89-46-04
 Барнаул (3852)73-04-60
 Белгород (4722)40-23-64
 Благовещенск (4162)22-76-07
 Брянск (4832)59-03-52
 Владивосток (423)249-28-31
 Владикавказ (8672)28-90-48
 Владимир (4922)49-43-18
 Волгоград (844)278-03-48
 Вологда (8172)26-41-59
 Воронеж (473)204-51-73
 Екатеринбург (343)384-55-89

Иваново (4932)77-34-06
 Ижевск (3412)26-03-58
 Иркутск (395)279-98-46
 Казань (843)206-01-48
 Калининград (4012)72-03-81
 Калуга (4842)92-23-67
 Кемерово (3842)65-04-62
 Киров (8332)68-02-04
 Коломна (4966)23-41-49
 Кострома (4942)77-07-48
 Краснодар (861)203-40-90
 Красноярск (391)204-63-61
 Курск (4712)77-13-04
 Курган (3522)50-90-47
 Липецк (4742)52-20-81

Россия +7(495)268-04-70

Магнитогорск (3519)55-03-13
 Москва (495)268-04-70
 Мурманск (8152)59-64-93
 Набережные Челны (8552)20-53-41
 Нижний Новгород (831)429-08-12
 Новокузнецк (3843)20-46-81
 Новоуральск (3496)41-32-12
 Новосибирск (383)227-86-73
 Омск (3812)21-46-40
 Оренбург (3532)37-68-04
 Пенза (8412)22-31-16
 Петрозаводск (8142)55-98-37
 Псков (8112)59-10-37
 Пермь (342)205-81-47

Казахстан +7(7172)727-132

Ростов-на-Дону (863)308-18-15
 Рязань (4912)46-61-64
 Самара (846)206-03-16
 Санкт-Петербург (812)309-46-40
 Саратов (845)249-38-78
 Севастополь (8692)22-31-93
 Саранск (8342)22-96-24
 Симферополь (3652)67-13-56
 Смоленск (4812)29-41-54
 Сочи (862)225-72-31
 Ставрополь (8652)20-65-13
 Сургут (3462)77-98-35
 Сыктывкар (8212)25-95-17
 Тамбов (4752)50-40-97
 Тверь (4822)63-31-35

Киргизия +996(312)96-26-47

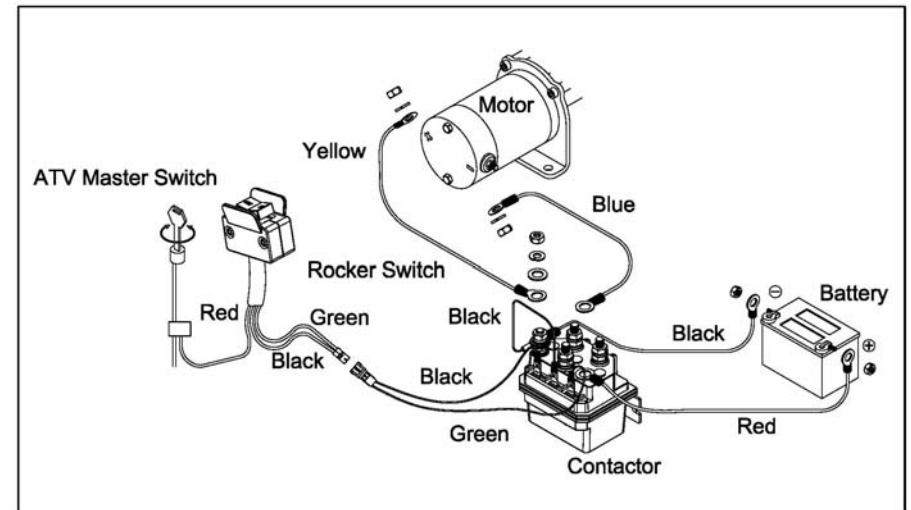
Тольятти (8482)63-91-07
 Томск (3822)98-41-53
 Тула (4872)53-79-87
 Тюмень (3452)66-21-18
 Ульяновск (8422)24-23-59
 Улан-Удэ (3012)59-97-51
 Уфа (347)229-48-12
 Хабаровск (4212)92-98-04
 Чебоксары (8352)28-53-07
 Челябинск (351)202-03-61
 Череповец (8202)49-02-64
 Чита (3022)38-34-83
 Якутск (4112)23-90-97
 Ярославль (4852)69-52-93

► Wire rope replacement

- It is very important that the winch will be mounted on a flat and hard surface of base plate in order to make sure the motor, drum and gearbox housing are aligned correctly.
- Roller fairlead does not mount to winch directly.
- The wire rope shall be wound in an under-wound orientation only.
- Four (4) M8 x 25L 8.8 grade high tensile steel bolts must be used in order to sustain the loads imposed on the winch mounting.
- Two (2) M8 x 20L 8.8 grade high tensile steel bolts must be used for fastening the roller fairlead into the base plate.

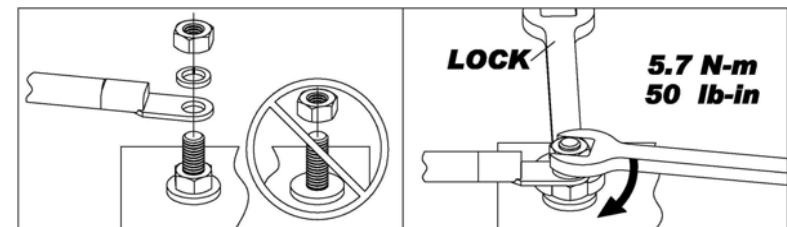
► Wiring Diagram

Attach the black lead firmly to the negative (-) battery terminal and red lead to the positive (+) battery terminal. The voltage drop for the winch motor must not exceed 10% of the nominal voltage of 12V DC.



► Nut fastening for motor & contactor

1. Holding the lower nut on the stub and fastening the upper nut clockwise.
2. The torque setting for nut is 5.7 N-m / 50 lb-in.

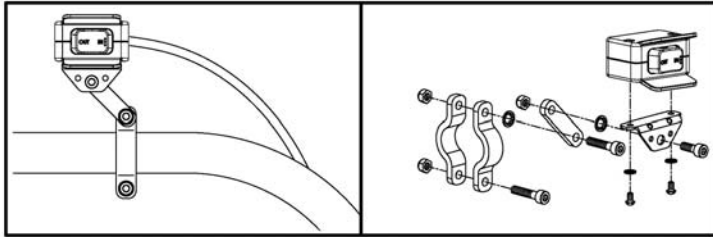


Warning

- The winch is not intended to be used in any manner for the movement or lifting of personnel.
- The pulling capacity shown is based on the first layer of rope on the drum.
- The rope winding on the drum shall remain 5 wraps from the drum.

Handlebar Rocker Switch Mounting

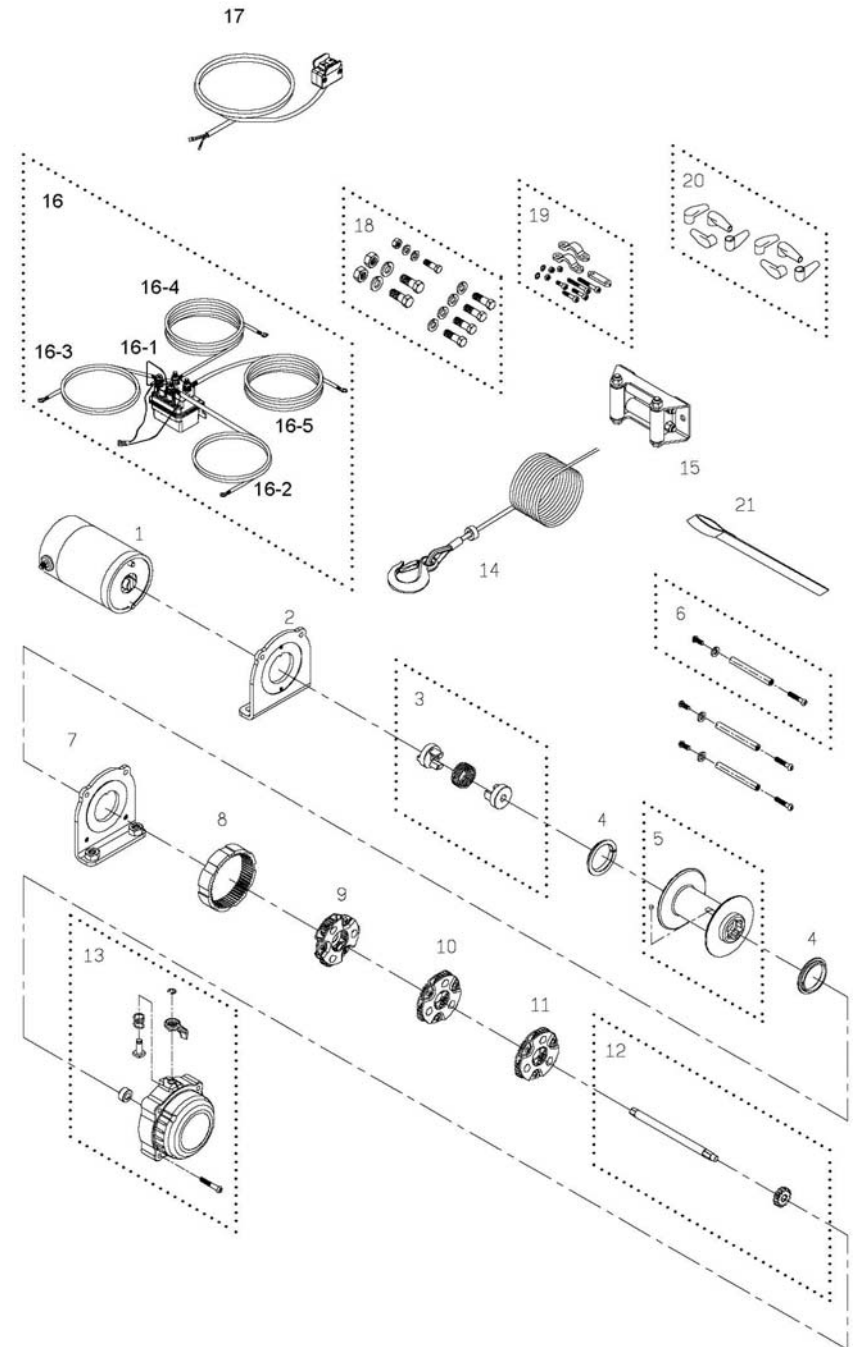
Handlebar mounted rocker switch can be operated without removing your hand from the grip.



Parts List

Item No.	Description	Part No.	Qty
1	Motor 12V	882036	1
2	Motor support rack	880246	1
3	Motor couple kit	880245	1
4	Drum bushing	880247	2
5	Drum kit	882037	1
6	Tie bar kit	880249	3
7	Gearbox support rack	880250	1
8	Ring gear	880251	1
9	3 rd stage carrier	880252	1
10	2 nd stage carrier	880253	1
11	1 st stage carrier	880254	1
12	1 st shaft kit	880255	1
13	Gearbox & shifter kit	882088	1
14	Wire rope w/hook	880257	1
15	Roller fairlead	880231	1
16	Contactork pack	881037	1
16-1	Contactork w/leads	881385	1
16-2	Battery lead (+)	880234	1
16-3	Battery lead (-)	880235	1
16-4	Motor lead(yellow)	880236	1
16-5	Motor lead(blue)	880237	1
17	Handlebar rocker switch kit	881003	1
18	Mounting hardware	880262	1
19	Handlebar hardware	881561	1
20	Boot kit	880263	1
21	Handsaver strap	880026	1

Winch Assembly



Introduction

► Feature

- Line pull: 907 kg / 2,000 lb wire rope first layer
- Wire rope: 4 mm x 15.2 m (5/32" x 50') synthetic rope
- Brake: **Mechanical spring applied and permanent magnet motor dynamic brakes together**
- Clutch: Turn the shifter for rapid wire rope payout
- Control: Handlebar rocker switch to power the winch

► Unpacking

- Winch assembly..... 1 pc
- Handlebar rocker switch kit 1 pc
- Hawse fairlead 1 pc
- Synthetic rope w/hook 1 pc
- Contactor pack 1 pc

► Read this manual carefully

You should carefully read and understand this manual before operating it. Careless winch operation may result in personal injury hazards or property damage.

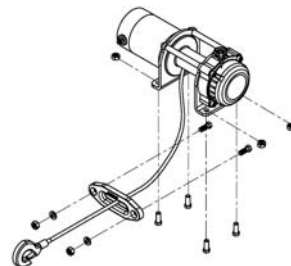
► Information requesting or parts ordering

Please specify the followings information:

- Winch PN
- Serial number
- Part description
- Replacement part number
- Quantity for each part

Installation

Before using the winch, make sure all electrical components have no corrosion or damaged; the environment should be clear and dry.

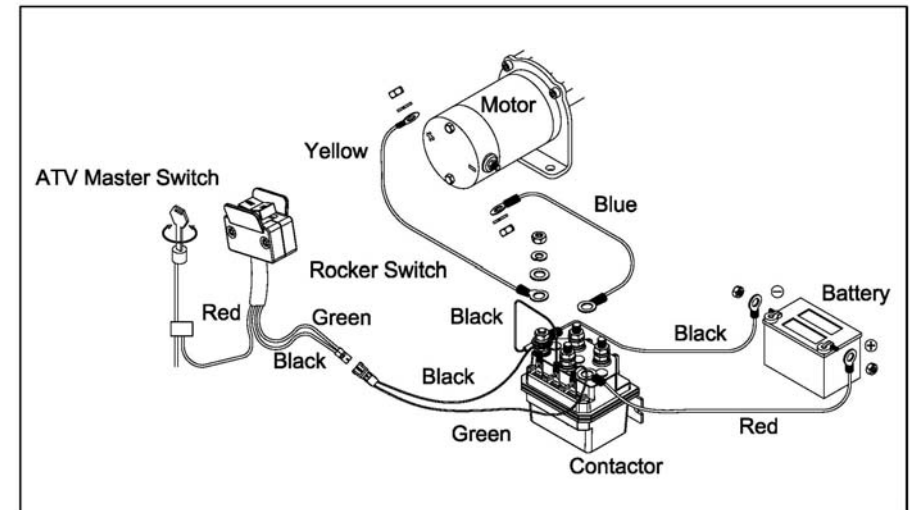


► Wire rope replacement

- It is very important that the winch will be mounted on a flat and hard surface of base plate in order to make sure the motor, drum and gearbox housing are aligned correctly.
- Haese fairlead does not mount to winch directly.
- The Synthetic rope shall be wound in an under-wound orientation only.
- Four (4) M8 x 25L 8.8 grade high tensile steel bolts must be used in order to sustain the loads imposed on the winch mounting.
- Two (2) M8 x 20L 8.8 grade high tensile steel bolts must be used for fastening the roller fairlead into the base plate.

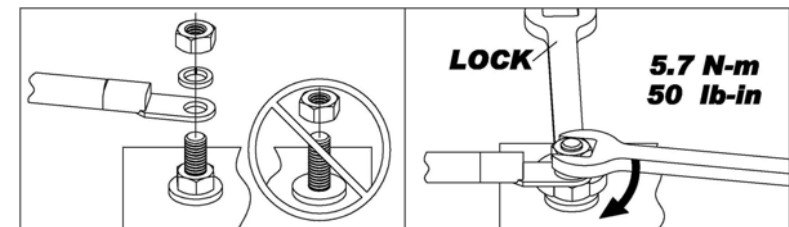
► Wiring Diagram

Attach the black lead firmly to the negative (-) battery terminal and red lead to the positive (+) battery terminal. The voltage drop for the winch motor must not exceed 10% of the nominal voltage of 12V DC.



► Nut fastening for motor & contactor

1. Holding the lower nut on the stub and fastening the upper nut clockwise.
2. The torque setting for nut is 5.7 N-m / 50 lb-in.

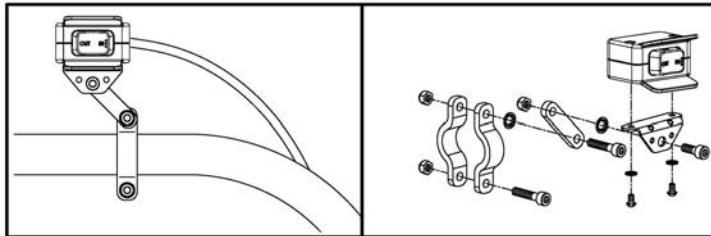


Warning

- The winch is not intended to be used in any manner for the movement or lifting of personnel.
- The pulling capacity shown is based on the first layer of rope on the drum.
- The rope winding on the drum shall remain 5 wraps from the drum.

Handlebar Rocker Switch Mounting

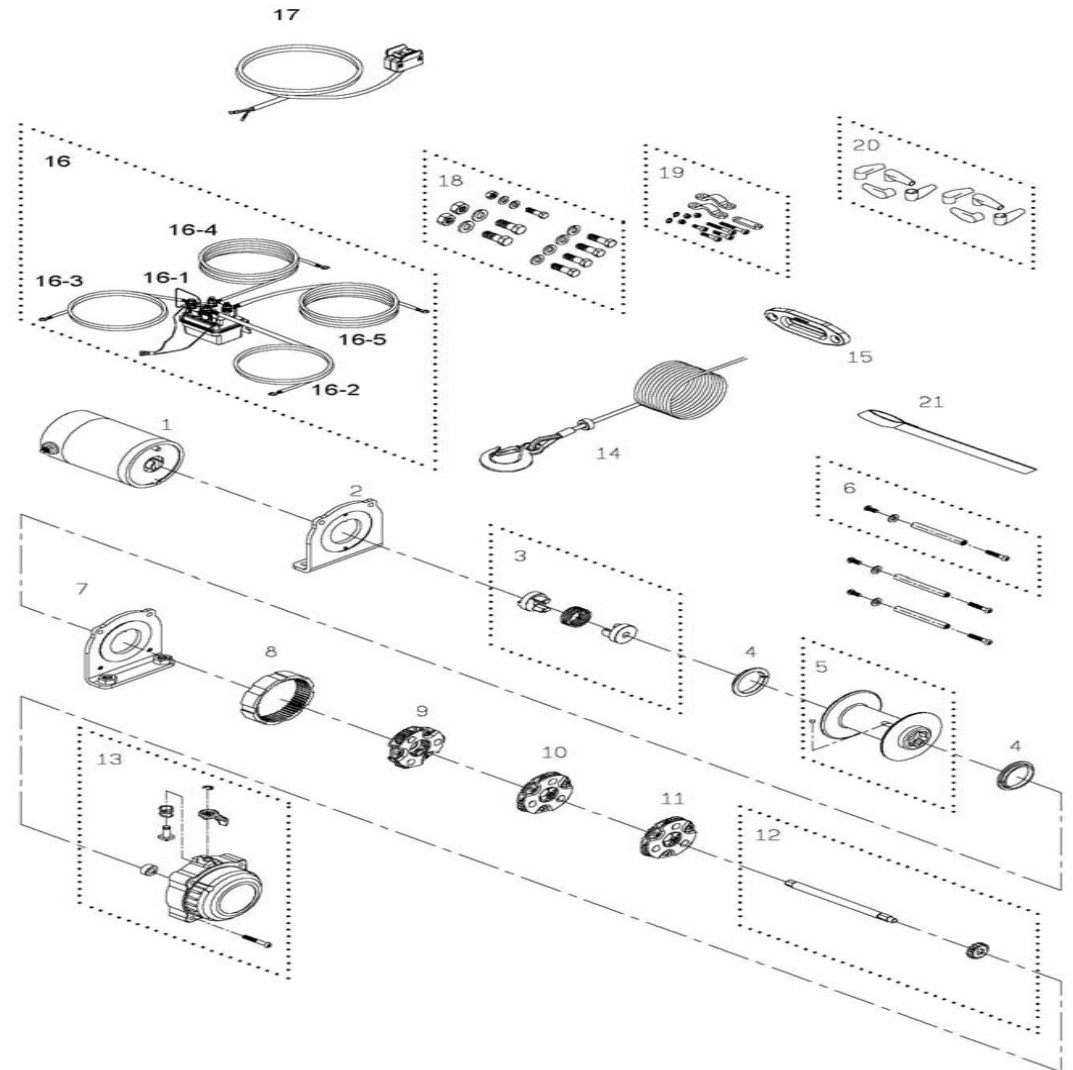
Handlebar mounted rocker switch can be operated without removing your hand from the grip.



Parts List

Item No.	Description	Part No.	Qty
1	Motor 12V	882036	1
2	Motor support rack	880246	1
3	Motor couple kit	880245	1
4	Drum bushing	880247	2
5	Drum kit	882037	1
6	Tie bar kit	880249	3
7	Gearbox support rack	880250	1
8	Ring gear	880251	1
9	3 rd stage carrier	880252	1
10	2 nd stage carrier	880253	1
11	1 st stage carrier	880254	1
12	1 st shaft kit	880255	1
13	Gearbox & shifter kit	882088	1
14	Synthetic rope w/hook	881065	1
15	Hawse fairlead	881071	1
16	Contactor pack	881037	1
16-1	Contactor w/leads	881385	1
16-2	Battery lead (+)	880234	1
16-3	Battery lead (-)	880235	1
16-4	Motor lead(yellow)	880236	1
16-5	Motor lead(blue)	880237	1
17	Handlebar rocker switch kit	881003	1
18	Mounting hardware	880262	1
19	Handlebar hardware	881561	1
20	Boot kit	880263	1
21	Handsaver strap	880026	1

Winch Assembly



Ver:1

Алматы (7273)495-231
 Ангарск (3955)60-70-56
 Архангельск (8182)63-90-72
 Астрахань (8512)99-46-04
 Барнаул (3852)73-04-60
 Белгород (4722)40-23-64
 Благовещенск (4162)22-76-07
 Брянск (4832)59-03-52
 Владивосток (423)249-28-31
 Владикавказ (8672)28-90-48
 Владимир (4922)49-43-18
 Волгоград (844)278-03-48
 Вологда (8172)26-41-59
 Воронеж (473)204-51-73
 Екатеринбург (343)384-55-89

Иваново (4932)77-34-06
 Ижевск (3412)26-03-58
 Иркутск (395)279-98-46
 Казань (843)206-01-48
 Калининград (4012)72-03-81
 Калуга (4842)92-23-67
 Кемерово (3842)65-04-62
 Киров (8332)68-02-04
 Коломна (4966)23-41-49
 Кострома (4942)77-07-48
 Краснодар (861)203-40-90
 Красноярск (391)204-63-61
 Курск (4712)77-13-04
 Курган (3522)50-90-47
 Липецк (4742)52-20-81

Россия +7(495)268-04-70

Магнитогорск (3519)55-03-13
 Москва (495)268-04-70
 Мурманск (8152)59-64-93
 Набережные Челны (8552)20-53-41
 Нижний Новгород (831)429-08-12
 Новокузнецк (3843)20-46-81
 Ноябрьск (3496)41-32-12
 Новосибирск (383)227-86-73
 Омск (3812)21-46-40
 Орел (4862)44-53-42
 Оренбург (3532)37-68-04
 Пенза (8412)22-31-16
 Петрозаводск (8142)55-98-37
 Псков (8112)59-10-37
 Пермь (342)205-81-47

Казахстан +7(7172)727-132

Ростов-на-Дону (863)308-18-15
 Рязань (4912)46-61-64
 Самара (846)206-03-16
 Санкт-Петербург (812)309-46-40
 Саратов (845)249-38-78
 Севастополь (8692)22-31-93
 Саранск (8342)22-96-24
 Симферополь (3652)67-13-56
 Смоленск (4812)29-41-54
 Сочи (862)225-72-31
 Ставрополь (8652)20-65-13
 Сургут (3462)77-98-35
 Сыктывкар (8212)25-95-17
 Тамбов (4752)50-40-97
 Тверь (4822)63-31-35

Киргизия +996(312)96-26-47

Тольятти (8482)63-91-07
 Томск (3822)98-41-53
 Тула (4872)33-79-87
 Тюмень (3452)66-21-18
 Ульяновск (8422)24-23-59
 Улан-Удэ (3012)59-97-51
 Уфа (347)229-48-12
 Хабаровск (4212)92-98-04
 Челябинск (8352)28-53-07
 Череповец (8202)49-02-64
 Чита (3022)38-34-83
 Якутск (4112)23-90-97
 Ярославль (4852)69-52-93