

## Wireless Control Kit (WK-100S)

### Wireless Control Kit for COMEUP CWS winch



- Clever designed fitting plate for easy installation on COMEUP CWS (160,230,300) winches.;
- Come with complete connectors for quick plug and play.
- Cut power emergency stop design (built in three relays) meets highest safety standard.
- High performance Industrial radio control module with operating range up to 100M.
- Industrial standard transmitter with mushroom type EMO button and LED operating indicators.
- High IP rating: Transmitter IP65; Receiver: IP67

#### • WK-100S

PN 883851 / AC110V

PN 883852 / AC220V

PN 883853 / AC240V

Control module		Indirect control +Wireless Control	
Frequency band		433MHz	
Typical operating range		100 M (328 ft)	
Applicable current		AC 110V 15A / 220V 7.5A / 240V 7.5A	
Function		Go up / Go down / Emergency stop	
Control Unit	Power Input	Current range	110V OR 220V OR 240V
		Power lead for main power source	2.0 mmx 3C/3P quick connector
	Power Output	Power lead for winch	2.0 mmx 3C/3P quick connector
		Control lead	2.0 mmx 6C/6P quick connector
	Contactors	Number	3 sets
	Receiver	Power supply	AC 110V / 220V / 240V
Function		Go up/ Go down / built-in buzzer	
Protection degree		IP67	
Transmitter	Power supply	DC3V	
	Button	Emergency stop switch, Power on switch	
	Power consumption	16mA	
	Battery	LR6(AA)1.5V*2	
	Protection degree	IP65	
Environment	Operating temperature	-25°C ~ + 55°C	
	Storage temperature	-40°C ~ + 65°C	

Алматы (7273)495-231  
 Ангарск (3955)60-70-56  
 Архангельск (8182)63-90-72  
 Астрахань (8512)99-46-04  
 Барнаул (3852)73-04-60  
 Белгород (4722)40-23-64  
 Благовещенск (4162)22-76-07  
 Брянск (4832)59-03-52  
 Владивосток (423)249-28-31  
 Владикавказ (8672)28-90-48  
 Владимир (4922)49-43-18  
 Волгоград (844)278-03-48  
 Вологда (6172)26-41-59  
 Воронеж (473)204-51-73  
 Екатеринбург (343)384-55-89

Иваново (4932)77-34-06  
 Ижевск (3412)26-03-58  
 Иркутск (395)279-98-46  
 Казань (843)206-01-48  
 Калининград (4012)72-03-81  
 Калуга (4842)92-23-67  
 Кемерово (3842)65-04-62  
 Киров (8332)68-02-04  
 Коломна (4966)23-41-49  
 Кострома (4942)77-07-48  
 Краснодар (861)203-40-90  
 Красноярск (391)204-63-61  
 Курск (4712)77-13-04  
 Курган (3522)50-90-47  
 Липецк (4742)52-20-81  
 Россия +7(495)288-04-70

Магнитогорск (3519)55-03-13  
 Москва (495)268-04-70  
 Мурманск (8152)59-64-93  
 Набережные Челны (8552)20-53-41  
 Нижний Новгород (831)429-08-12  
 Новокузнецк (3843)20-46-81  
 Ноябрьск (3496)41-32-12  
 Новосибирск (383)227-86-73  
 Омск (3812)21-46-40  
 Орел (4862)44-53-42  
 Оренбург (3532)37-68-04  
 Пенза (8412)22-31-16  
 Петрозаводск (8142)55-98-37  
 Псков (8112)59-10-37  
 Пермь (342)205-81-47  
 Казахстан +7(7172)727-132

Ростов-на-Дону (863)308-18-15  
 Рязань (4912)46-61-64  
 Самара (846)206-03-16  
 Санкт-Петербург (812)309-46-40  
 Саратов (845)249-38-78  
 Севастополь (8692)22-31-93  
 Саранск (8342)22-96-24  
 Симферополь (3652)67-13-56  
 Смоленск (4812)29-41-54  
 Сочи (862)225-72-31  
 Ставрополь (8652)20-65-13  
 Сургут (3462)77-96-35  
 Сыктывкар (8212)25-95-17  
 Тамбов (4752)50-40-97  
 Тверь (4822)63-31-35  
 Киргизия +996(312)96-26-47

Тольятти (8482)63-91-07  
 Томск (3822)98-41-53  
 Тула (4872)33-79-87  
 Тюмень (3452)66-21-18  
 Ульяновск (8422)24-23-59  
 Улан-Удэ (3012)59-97-51  
 Уфа (347)229-48-12  
 Хабаровск (4212)92-98-04  
 Чебоксары (8352)28-53-07  
 Челябинск (351)202-03-61  
 Череповец (8202)49-02-64  
 Чита (3022)38-34-83  
 Якутск (4112)23-90-97  
 Ярославль (4852)69-52-93

**NEW**



## Wireless Control Kit (WK-100L)

### Wireless Control Kit for COMEUP CWL winch

- Cut power emergency stop design (built in three relays) meets highest safety standard.
- High performance Industrial radio control module with operating range up to 100M.
- Industrial standard transmitter with mushroom type EMO button and LED operating indicators.
- High IP rating: Transmitter IP65; Receiver: IP67

• **WK-100L**

PN 884018 / AC110V

PN 884019 / AC220V

PN 884029 / AC240V

Control module		Indirect control +Wireless Control	
Frequency band		433MHz	
Typical operating range		100 M (328 ft)	
Applicable current		AC 110V 15A / 220V 7.5A / 240V 7.5A	
Function		Go up / Go down / Emergency stop	
Control Unit	Power Input	Current range	110V OR 220V OR 240V
		Power lead for main power source	2.0 mmx 3C x 1.5M
	Power Output	Power lead for winch	2.0 mmx 3C/3P quick connector
		Control lead	2.0 mmx 6C/6P quick connector
	Contactors	Number	3 sets
	Receiver	Power supply	AC 110V / 220V / 240V
		Function	Go up/ Go down / built-in buzzer
Protection degree		IP67	
Transmitter	Power supply	DC3V	
	Button	Emergency stop switch, Power on switch	
	Power consumption	16mA	
	Battery	LR6(AA)1.5V*2	
	Protection degree	IP65	
Environment	Operating temperature	-25°C ~ + 55°C	
	Storage temperature	-40°C ~ + 65°C	



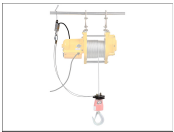


## Upper Limit Switch

---

### Upper limit switch (Load limit switch)

- Upper limit switch for COMEUP AC winches
- Available for CP/CWL/CWG series
- Adjustable cable length fits your settings
- Indirect control box applicable
- Protect against over lifting to ceiling, performing stage, construction site or any facilities.
- Available as optional accessories or combination.



---

**PN 882904** for CP/CWL/CWG series



## Remote Control

---



- **PN 880387** Pendant switch HOB-213 w/3.5 mm x 5C x 6 m cord for CP-500/500T, CWG-10077
- **PN 881040** Pendant switch HOB-213 w/1.25 mm x 5C x 3 m cord for CP-200/250/300, CWG-30075
- **PN 881041** Pendant switch HOB-213 w/2.0 mm x 5C x 3 m cord for CWG-30151
- **PN 881042** Pendant switch HOB-213 w/3.5 mm x 5C x 3 m cord for CWG-10151
- **PN 880486** Pendant switch CPB-313 w/1.25 mm x 6C x 10 m cord for CWS-80/160/230/300, CWL-200/200L
- **PN 881046** Pendant switch CPB-313 w/2.0 mm x 6C x 10 m cord for CWL-301/301L
- **PN 881430** Pendant switch CPB-413 w/1.25 mm x 6C x 3 m cord for CWL-80
- **PN 881047** Pendant switch CPB-161 w/1.25 mm x 3C x 3 m cord, INDIRECT,

Applicable for winches with a low voltage control; CP-500T/750T/900T, CWG-500TH/30075/30151/30265/30375/30565/30750/31500/34000

## Remote Control with an Emergency Stop

---



- **PN 881752** Pendant switch PB-331 w/3.5 mm x 5C x 6 m cord for CP-500/500T, CWG-10077
- **PN 883145** Remote Control, PB-417 for CWS-80/160/230/300
- **PN 881048** Pendant switch PB-306 w/1.25 mm x 3C x 3 m cord, INDIRECT,  
Applicable for winches with a low voltage control; CP-500T/750T/900T, CWG-500TH/30075/30151/30265/30375/30565/30750/31500/34000
- **PN 881603** Pendant switch PB-317A w/1.25 mm x 6C x 3 m cord for CWL-80
- **PN 881749** Pendant switch PB-317 w/2.0 mm x 6C x 10 m cord for CWL-301/301L

## Low Voltage Control

---



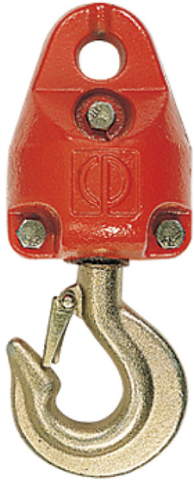
LV-320 w/plastic cover



- **LV-320** w/plastic cover, for CP-500T, CP-750T, CWG-30075, CWG-30151, CWG-30375, CWG-30565, CWG-30750, CWG-31500
- **LV-360** w/steel cover, for CWG-34000

## Weight Hook

---



CHW-0005  
Rated 500 Kg



CHW-0031  
Rated 300 Kg



CHW-0032  
CHW-0033  
Rated 300 Kg

- 
- **PN 880444** CHW-0005, rated 500 kg for CP-500/500T , CWG-10151/30151
  - **PN 880384** CHW-0031, rated 300 kg for CP-200/250/300, CWG-10077/30075, CWL-200L/301L
  - **PN 880475** CHW-0032, rated 300 kg for CWS-80
  - **PN 880505** CHW-0033, rated 300 kg for CWS-160/230/300

## Tree Trunk Protector Strap

---

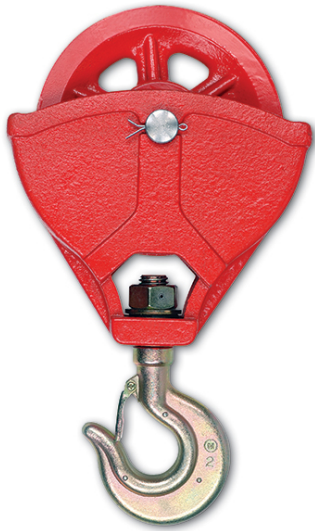
- This tree trunk protector strap is useful for connecting a winch wire rope to almost any anchor point, but is primarily designed to prevent damage to a live tree trunk.



---

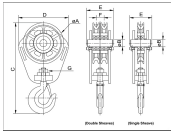
Part Number: **PN 881091**

- Min. Breaking Strength ( M.B.S.): 13,610 kgs / 30,000 lbs
- Working Load Limit ( W.L.L.): 2,722 kgs / 6,000 lbs
- Polyester webbing
- Length: 2.4 m / 8'
- Width: 100 mm / 4"



## Tackle Block

- Rated Load : 1,000~3,000 kg
- Single sheave tackle block
- Double sheaves tackle block



Model number		CBT-1000	CBT-2000	CBT-3000	CBT-1000D	CBT-2000D
Sheave		Single			Double	
Rated load		1,000	2,000	3,000	1,000	2,000
Dimension (mm)	øA	190	225	265	190	225
	øB	25	40	40	30	40
	C	392	507	540	377	507
	D	226	276	320	228	276
	E	75	122	122	128	149
	F	-	-	-	35	48
	G	M20	M24	M30	M20	M24
Max. wire rope dia.		ø12	ø16	ø16	ø12	ø16

### Note:

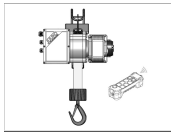
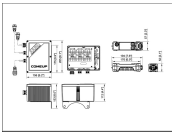
- The winch is not intended to be used in any manner for the movement or lifting of personnel.
- 60 Hz motor is available upon request.
- Use a trackle block for double line operation, to increase the rated load of the winch by approximately 85%.

**NEW**

## WK-100H

### Wireless Control Kit for COMEUP CSH winch

- Clever designed fitting plate for easy installation on COMEUP CSH (130,250) winches.
- Come with complete connectors for quick plug and play.
- Cut power emergency stop design (built in three relays) meets highest safety standard.
- High performance Industrial radio control module with operating range up to 100M.
- Industrial standard transmitter with mushroom type EMO button and LED operating indicators.
- High IP rating: Transmitter IP65; Receiver: IP67



- **WK-100H**

PN 883874 / AC110V

PN 883875 / AC220V

PN 883881 / AC240V

Control module		Indirect control +Wireless Control	
Frequency band		433MHz	
Typical operating range		100 M (328 ft)	
Applicable current		AC 110V 15A / 220V 7.5A / 240V 7.5A	
Function		Go up / Go down / Emergency stop	
Control Unit	Power Input	Current range	110V OR 220V OR 240V
		Power lead for main power source	2.0 mmx 3C/3P quick connector
	Power Output	Power lead for winch	2.0 mmx 3C/3P quick connector
		Control lead	2.0 mmx 6C/6P quick connector
	Contactors	Number	3 sets
	Receiver	Power supply	AC 110V / 220V / 240V
		Function	Go up/ Go down / built-in buzzer
Protection degree		IP67	
Transmitter	Power supply	DC3V	
	Button	Emergency stop switch, Power on switch	
	Power consumption	16mA	
	Battery	LR6(AA)1.5V*2	
	Protection degree	IP65	
Environment	Operating temperature	25°C ~ + 55°C	
	Storage temperature	-40°C ~ + 65°C	

## Wireless Remote Control

---

### RF-24DP

- Works with any 12 or 24 volt contact-switched automotive winches.
- 2.4 GHz wireless technology works within 27m (90') radius and the anti-interference function lets you move around an obstacle for winching.
- Stylish and ergonomic design fits comfortably with your hand.
- Power is switched on after a 5-second continuous press for safety.
- Power is cut after 5-minutes of inactivity for safety and conserving battery life.
- The transmitter can be self-coded, simplifying installation and replacement.
- Meets international standards of CE Electromagnetic Compatibility Directive 2014/30/EU.
- This equipment has been tested and found to comply with the limits for a Class B digital device, pursuant to part 15 of the FCC Rules. These limits are designed to provide reasonable protection against harmful interference in a residential installation.



---

**PN 883872** RF-24DP-C with a 6-pin plug for automotive winches

**PN 883870** RF-24DP-A with a 3-pin plug for automotive winches

- Frequency : 2.4 GHz
- Remote range : up to 27 m (90')
- LED indication : Green light for power on.
- Red light for winching.
- Blinking green light for low battery life.
- Blinking red light for poor signal received.
- Transmitter : 3V lithium battery, weight: 60 g / 2.1 oz
- Receiver : DC 8-24V rated 7.5A, weight: 150 g / 5.3 oz

### WARRANTY

- Each new wireless remote control is guaranteed against defects in workmanship and material defects for period of one (1) year from date of purchase.

## Wire Rope

---



- 
- **PN 881929** 12.7 mm x 25 m (1/2" x 82') for DV-18
  - **PN 882027** 11.1 mm x 27.4 m (7/16" x 90') for Seal Gen2 16.5, DV-15
  - **PN 882026** 9.5 mm x 38.1 m (3/8" x 125') for DV-12
  - **PN 881994** 9.5 mm x 25 m (3/8" x 82') for Seal Gen2 12.5, DV-12 light
  - **PN 881988** 8.7 mm x 30.5 m (11/32" x 100') for Seal Gen2 9.5/9.5i
  - **PN 881986** 8.3 mm x 30.5 m (21/64" x 100') for DV-9
  - **PN 881987** 8.3 mm x 30.5 m (21/64" x 100') for DV-9i
  - **PN 882367** 7.1 mm x 24.4 m (9/32" x 80') for DV-6 Std.drum
  - **PN 882414** 7.1 mm x 30.5 m (9/32" x 100') for DV-6 Long drum
  - **PN 883082** 12.7 mm x 25 m (1/2" x 82'), 6 x 29 – IWRC (Breaking strength 126.4 kN) for Walrus 22.0
  - **PN 883081** 11.1 mm x 27 m (7/16" x 89'), 6 x 29 – IWRC (Breaking strength 100.7 kN) for Walrus 18.0
  - **PN 883675** 12.7 mm x 18 m (1/2" x 59'), 6 x 29 – IWRC (Breaking strength 126.4 kN) for Seal Gen2 20.0
  - **PN 883211** 8.3 mm x 29 m (21/64" x 95') for GIO 80
  - **PN 883212** 9.5 mm x 26 m (3/8" x 85.3') for GIO 100
  - **PN 883213** 10.3 mm x 25.5 m (13/32" x 83.7) for GIO 120



## Tow Strap

---

- Use a tow strap to pull another vehicle or as a winch extension.



- 
- Part Number: **PN 881090**
  - Min. Breaking Strength ( M.B.S.): 9,800 kgs / 21,600 lbs
  - Working Load Limit ( W.L.L.): 1,960 kgs / 4,320 lbs
  - Polyester webbing
  - Reinforced eyelets on both end
  - Length: 9 m / 30'
  - Width: 75 mm / 3"

## Roller Fairlead

---



- 
- **PN 880289** 63 mm throat for DV-4500i
  - **PN 880066** 179 mm throat for DV-12/15/18, Seal Gen2 16.5/20.0
  - **PN 880096** 109 mm throat for DV-6 Std. drum
  - **PN 880023** 210 mm throat for DV-6 Long drum, DV-9/9i/12 light, Seal Gen2 9.5/9.5i/12.5
  - **PN 882990** 179 mm throat for Walrus 18.0
  - **PN 883088** 229 mm throat for Walrus 22.0
  - **PN 883222** 203 mm throat for GIO 80/100/120

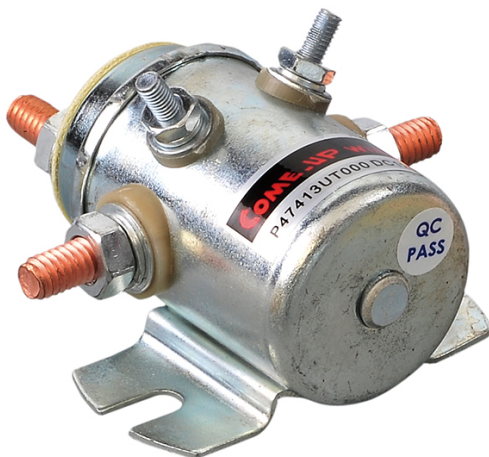


## Synthetic Rope

---

- Lightweight, high strength and no water absorption
- A 12 strand construction rope coated to improve abrasion resistance and to protect the rope from the ingress of dirt and grit

- 
- **PN 883676** w/o hook for Seal Gen2 20.0s/20.0rs  
16.7m (55') of 14 mm (9/16") diameter synthetic rope designs for electric winches application with line pull of 9,072 kg (20,000 lb) or less
  - **PN 883325** w/o hook for Seal Gen2 16.5s/16.5rs  
25 m (82') of 12.7 mm (1/2") diameter synthetic rope designs for electric winches application with line pull of 7,484 kg (16,500 lb) or less
  - **PN 883248** w/o hook for Seal Gen2 9.5s/9.5rs/9.5si/9.5rsi, DV-9s/9si, Seal MadX 8.0s, Seal Slim 9.5rs  
30.5 m (100') of 10 mm (3/8") diameter synthetic rope designs for off-road winches application with line pull of 4,309 kg (9,500 lb) or less.
  - **PN 883285** w/o hook for Seal Gen2 12.5s/12.5rs, DV-12s light, Seal Slim 12.5rs  
25 m (82') of 11 mm (7/16") diameter synthetic rope designs for off-road winches application with line pull of 5,670 kg (12,500 lb) or less.
  - **PN 883274** w/o hook for DV-6s/6s carry on  
24.4 m (80') of 8 mm (5/16") diameter synthetic rope designs for portable winch application with line pull of 2,722 kg (6,000 lb) or less.
  - **PN 883413** w/o hook for Utility Winch 5000si  
15.2 m (50') of 6.3 mm (1/4") diameter synthetic rope design for utility duty winch application with line pull of 2,268 kg (5,000 lb) or less.
  - **PN 883271** 8 mm x 30.5 m (5/16" x 100') for GIO 80s
  - **PN 883272** 10 mm x 26 m (3/8" x 85.3') for GIO 100s
  - **PN 883273** 11 mm x 25.5 m (7/16" x 83.7') for GIO 120s
  - **PN 883240** 11 mm x 46 m (7/16" x 151') for Blazer M2/M3



## DC Solenoid

---

- 
- **PN 881077** (12V) / **PN 881078** (24V) for DV-2500i/3500i/4500i

## Detachable Control Box

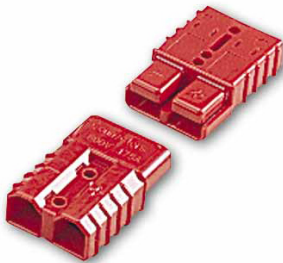
---



- **PN 881164** (12V) for DV-9/9s/12 light/12s light/12/15/18, Seal Gen2 9.5/9.5s/12.5/12.5s/16.5/16.5s/20.0/20.0s
- **PN 881165** (24V) for DV-9/9s/12 light/12s light/12/15/18
- **PN 882780** (12V) for Seal Gen2 9.5rs/12.5rs/16.5rs/20.0rs, w/built-in wireless receiver
- **PN 882242** (12V) with handle for DV-6s carry on
- **PN 882265** (12V) with handle for DV-6 Std. drum, DV-6s
- **PN 882398** (12V) for DV-6 Long drum
- **PN 883070** (12V) for Seal MadX 8.0s
- **PN 883579** (12V) for Seal Slim 9.5rs/12.5rs w/built-in wireless receiver & Cutout Switch
- **PN 883637** (12V) for GIO 80/80s/100/100s
- **PN 883638** (12V) for GIO 120/120s

## Quick Connector

---



- **PN 881075** 50A
- **PN 881076** 175A

## Sealed Contactor

---

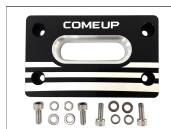
250A, 400A, 500A



- **PN 881355 (12V) / PN 881356 (24V)** 400A, for DV-9/9s/9i/9si/12 light/12s light/12/15/18, Seal Gen2 9.5/9.5s/9.5rs/9.5i/9.5si/9.5rsi/12.5/12.5s/12.5rs/16.5/16.5s/16.5rs/20.0/20.0s/20.0rs, Seal Slim 9.5rs/12.5rs, Seal MadX 8.0s, Walrus 18.0/22.0
- **PN 881357 (12V)** 250A, for DV-6/6s/6s carry on
- **PN 883402 (12V)** DES-5012 500A for Blazer M2/ M3 and applicable for other brands of competition winches
- **PN 882083 (12V)** 250A, contactor w/lead for Utility Winch 5000si

## Hawse Fairlead

---



- **PN 883410** 184 mm throat for Seal Gen2 9.5s/9.5rs/9.5si/9.5rsi/12.5s/12.5rs/16.5s/16.5rs/20.0s/20.0rs, DV-9s/9si/12s light, Seal Slim 9.5rs/12.5rs
- **PN 882152** 112 mm throat for DV-6s/6s carry on
- **PN 883187** 275(W) x 25(H) mm throat for Blazer M2/M3
- **PN 883789** 371(W) x 25(H) mm throat for Blazer M2/M3 Long drum
- **PN 883411** 69 mm throat for Utility Winch 5000si
- **PN 883622** 183 mm throat for GIO 80s/100s/120s

## Snatch Block

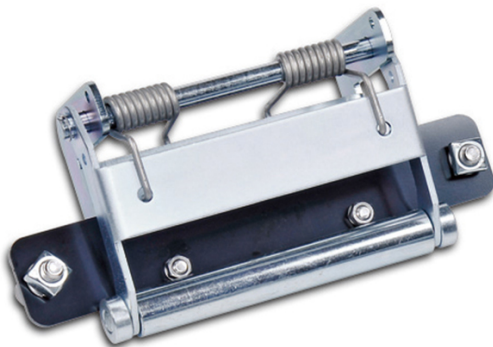
---



- **PN 881079** Max. load 10,000 kg / 22,000 lb for DV-6/6s/6s carry on, DV-9/9s/9i/9si, Seal Gen2 9.5/9.5s/9.5rs/9.5i/9.5si/9.5rsi, Seal Slim 9.5rs, Seal Mad 8.0s, Blazer M2/M3, GIO/80/80s/100/100s
- **PN 881080** Max. load 5,000 kg / 11,000 lb for DV-2500i/3500i/4500i, UW-5000si
- **PN 881082** Max. load 13,610 kg / 30,000 lb for DV-12 light/12s light/12/15, Seal Gen2 12.5/12.5s/12.5rs, Seal Slim 12.5rs, GIO 120/120s
- **PN 883866** Max. load 22,680 kg / 50,000 lb for DV-18, Seal Gen2 16.5/16.5s/16.5rs/20.0/20.0s/20.0rs, Walrus 18.0/22.0

## Cable Tensioner

---



- **PN 881087** 204 mm for DV-12/15
- **PN 882038** 184 mm for DV-18
- **PN 883091** 254 mm for Walrus 22.0
- **PN 883090** 204 mm for Walrus 18.0

## Mounting Channel

---



- 
- **PN 881083** Front mounting for DV-6 Long drum, DV-9/9s/9i/9si, Seal Gen2 9.5/9.5s/9.5rs/9.5i/9.5si/9.5rsi
  - **PN 881085** Front mounting channel for DV-12/15
  - **PN 882264** 2" hitch receiver for DV-6s carry on
  - **PN 884026** U-Type bracket for Detachable Control Box

## Bow Shackles

---



- 
- **PN 883440** 33 mm (3/4") pin diameter



## Emergency Stop Switch

---



- 
- Emergency Stop Switch, [PN 881668](#) 400A

## Battery Isolation Switch

---



- 
- [PN 881097](#) 2 Position Off-On 12V 500 Amp for Seal Gen2/Seal Slim/DV Series Winch



## Remote Control

---



- **PN 880295** for DV-4500i
- **PN 880025** for DV-6/6s/6s carry on, GIO Series
- **PN 880126** for Seal Gen2 Series, Seal Slim Series, DV-9/9s/9i/9si/12 light/12s light/12/15/18, Seal MadX 8.0s (comes with protective thermal sensor LED)
- **PN 881671** for Walrus 18.0/22.0 (comes with protective thermal sensor LED & military quick connector)

## Hook

---



- **PN 882477** sling hook for Seal Gen2 9.5s/9.5rs/9.5i/9.5si/12.5s/12.5rs/16.5s/16.5rs, DV-9s/9si/12s light, Seal MadX 8.0s, Seal Slim 9.5rs/12.5rs, Blazer M2/M3
- **PN 881996** 1/2" clevis hook for DV-12/15/18, Seal Gen2 12.5/16.5/20.0, GIO 100s/120/120s
- **PN 881995** 3/8" clevis hook for Seal Gen2 9.5/9.5i, DV-9/9i/6/6s/6s carry on, GIO 100
- **PN 881997** 5/16" clevis hook for Utility Winch 5000si, GIO 80/80s
- **PN 883677** sling hook for Seal Gen2 20.0s/20.0rs
- **PN 883009** 1/2" clevis hook for Walrus 18.0/22.0

## Bridge Control Box

---



- 
- **PN 882685** (12V) for Seal Gen2 9.5rsi, w/built-in wireless receiver
  - **PN 882681** (12V) for Seal Gen2 9.5i/9.5si
  - **PN 881160** (12V) / **PN 881161** (24V) for DV-9i/9si

## Air Clutch

---

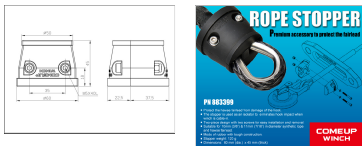


- 
- **PN 883036** for Seal Slim 9.5rs/12.5rs, Seal MadX 8.0s, Seal Gen2 9.5/9.5s/9.5rs/9.5i/9.5si/9.5rsi/12.5/12.5s/12.5rs

## Rope Stopper

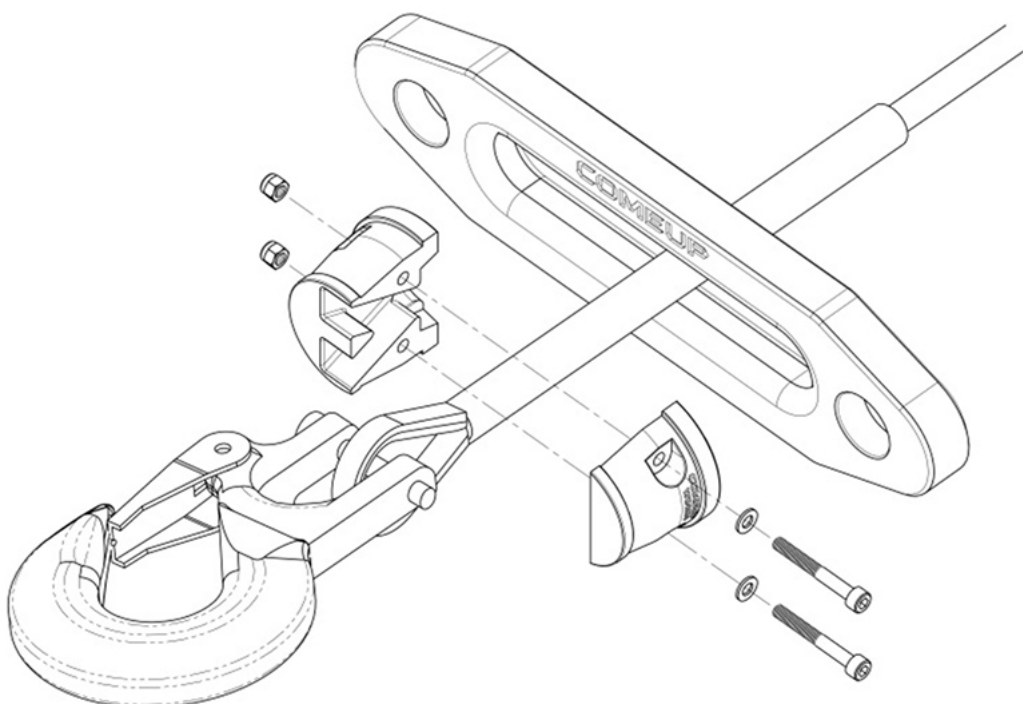
### Premium accessory to protect the fairlead

- Part Number : **PN 883399**
- Protect the hawse fairlead from damage of the hook.
- The stopper is used as an isolator to eliminates hook impact when winch is cable-in.
- Two-piece design with two screws for easy installation and removal.
- Suitable for 10 mm (3/8") & 11 mm (7/16") in diameter synthetic rope and hawse fairlead.
- Made of rubber with tough construction.
- Stopper weight: 120 g
- Dimensions: 60 mm (dia.) x 45 mm (thick)



1. Disengaged the clutch.
2. Freespool and pull out the rope.
3. Engaged the clutch
4. Take off clevis hook from winch rope.
5. Remove the two screws and separate the two halves of the winch rope stopper.
6. Place the rope between the two halves and insert the four bolts and tighten.
7. Re-attach clevis hook to rope thimble.
8. Engaged clutch and retract rope onto winch drum until clevis hook is close to the winch rope stopper and hawse fairlead.

**Note: Wear leather gloves**



## Clutch Lever Kit

---



- 
- **PN 883236** for Seal Gen2 9.5/9.5s/9.5rs/9.5i/9.5si/9.5rsi/12.5/12.5s/12.5rs, Seal Slim 9.5rs/12.5rs
  - **PN 883239** for Seal Gen2 16.5/16.5s/16.5rs/20.0/20.0s/20.0rs, Walrus 18.0/22.0

## Wire Rope with Safety Hook

---



- 
- **PN 880305** 6.3 mm x 15.2 m (1/4" x 50') for DV-4500i

## Winch Accessory Kit

---

- **Medium Duty Kit - PN 883436**  
Designed for winch single line capacity up to 4,309 kg / 9,500 lb
- **Heavy Duty Kit - PN 883438**  
Designed for winch single line capacity up to 6,803 kg / 15,000 lb



---

### Medium Duty Kit PN 883436

Designed for winch single line capacity up to 4,309 kg / 9,500 lb includes:

- 10,000 kg / 22,000 lb maximum capacity snatch block, PN 881079
- 100 mm x 2.4 m (4" x 8') tree trunk protector strap, PN 881091
- 75 mm x 9 m (3" x 30') tow strap rated to 9,800 kgs / 21,600 lbs, PN 881090
- Bow Shackle, 33 mm (3/4") pin diameter, PN 883440
- Gloves, PN 883437
- Bag, PN 883439



---

### RF-24DP

- Works with any 12 or 24 volt contact-switched automotive winches.
- 2.4 GHz wireless technology works within 27m (90') radius and the anti-interference function lets you move around an obstacle for winching.
- Stylish and ergonomic design fits comfortably with your hand.
- Power is switched on after a 5-second continuous press for safety.
- Power is cut after 5-minutes of inactivity for safety and conserving battery life.
- The transmitter can be self-coded, simplifying installation and replacement.
- Meets international standards of CE Electromagnetic Compatibility Directive 2014/30/EU.
- This equipment has been tested and found to comply with the limits for a Class B digital device, pursuant to part 15 of the FCC Rules. These limits are designed to provide reasonable protection against harmful interference in a residential installation.

## Roller Fairlead

---



- 
- **PN 880231** 65 mm throat for Cub 2/3
  - **PN 880132** 109 mm throat for Cub 4

## Hawse Fairlead

---



- 
- **PN 881071** 65 mm throat for Cub 2s/3s
  - **PN 881072** 108 mm throat for Cub 4s/4s carry on



## Synthetic Rope with Hook

---



- Lightweight, high strength and no water absorption
- A 12 strand construction rope coated to improve abrasion resistance and to protect the rope from the ingress of dirt and grit

- 
- **PN 881065** w/hook for Cub 2s  
15.2 m (50') of 4 mm (5/32") diameter synthetic rope design for powersports winch application with line pull of 907 kg (2,000 lb) or less
  - **PN 881952** w/hook for Cub 3s  
15.2 m (50') of 4.8 mm (3/16") diameter synthetic rope design for powersports winch application with line pull of 1,361 kg (3,000 lb) or less
  - **PN 881953** w/hook for Cub 4s  
15.2 m (50') of 5.5 mm (7/32") diameter synthetic rope design for powersports winch application with line pull of 1,814 kg (4,000 lb) or less
  - **PN 881993** w/o hook for Cub 4s carry on  
15.2 m (50') of 5.5 mm (7/32") diameter synthetic rope design for powersports winch application with line pull of 1,814 kg (4,000 lb) or less

## Wire Rope with Hook

---



- 
- **PN 880257** 4 mm x 15.2 m (5/32" x 50') w/stopper for Cub 2
  - **PN 881954** 4.8 mm x 15.2 m (3/16" x 50') w/stopper for Cub 3
  - **PN 881955** 5.5 mm x 15.2 m (7/32" x 50') w/stopper for Cub 4



## Remote Control + Remote Socket

---



- PN 881305 + PN 881004 for Cub 2/2s/3/3s/4/4s  
PN 881305 for Cub 4s carry on

## Contactor with Lead

---



- PN 881385 250A, 12V for Cub 2/2s3/3s/4/4s/4s carry on

## Handlebar Switch Kit

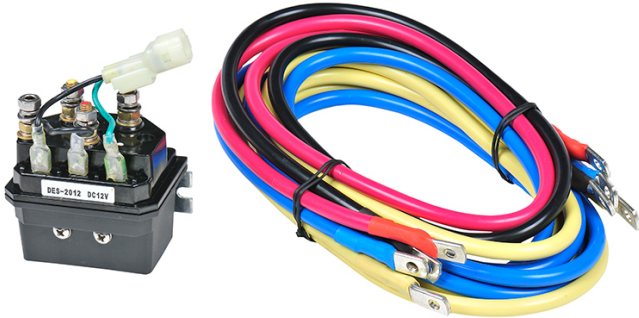
---



- 
- **PN 881003** Rocker switch with cord for Cub 2/2s/3/3s/4/4s

## Contactor Pack

---



- 
- **PN 881037** 12V, Detachable contactor pack for Cub 2/2s/3/3s/4/4s

## Snatch Block

---



- 
- **PN 881080** Max. load 5,000 kg / 11,000 lb for Cub 4/4s/4s carry on
  - **PN 881081** Max. load 2,700 kg / 6,000 lb for Cub 2/2s/3/3s

## Hook

---



- 
- **PN 881997** 5/16" clevis hook for Cub 4s carry on

## Base Plate Kit

---



- **PN 882241** 2" hitch receiver for Cub 4s carry on
- **PN 880269** Base plate bracket for Cub 4s carry on

## Sealed Contactor

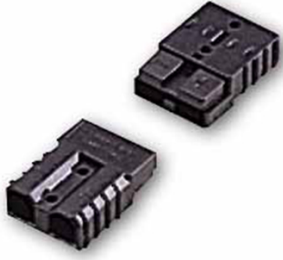
---



- **PN 881355** (12V) / **PN 881356** (24V) 400A, for Rhino 8/8 Pro/12/12 Pro/15/15 Pro, Wolf 8.5/12.0
- **PN 882083** (12V) / **PN 882084** (24V) 250A, contactor w/lead for GTD-650/800/1200/2200/2800

## Quick Connector

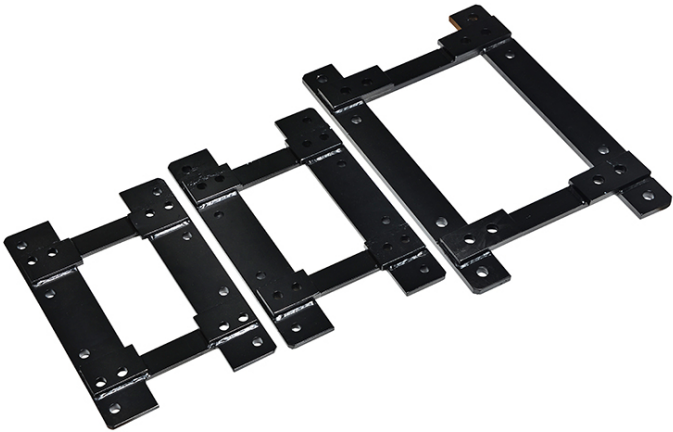
---



- 
- **PN 881075** 50A, for Cub 2/2s/3/3s/4/4s/4s carry on

## Base Plate Bracket

---



- 
- **PN 883830** for Bison 50
  - **PN 883831** for Bison 30
  - **PN 883832** for Bison 30 Long drum
  - **PN 883833** for Bison 20
  - **PN 883834** for Bison 20 Long drum

NEW



## ICB SERIES

---

### Intelligent Control Box

- Patented over-loading current protector can be programmed by the winch specification and pulling requirements which limits the winch's maximum pulling power.
- Optional digits regulator panel for setting up overload current and also shows instant battery voltage value while operating winch.
- LED Indicator displays detailed winch status while operating.
- Low voltage detecting function reminds operator vehicle battery status.
- Applicable for other brands of winches.
- Durable aluminum alloy die cast housings.
- IP68 rated waterproof.



- **Part number:** ICB 318 **PN 883584** (12V)  
ICB 318 **PN 883585** (24V)
- **Power:** DC 12V / 24V
- **Current Range:** 0-600 Amp
- **Supply Voltage:** 9-27 V
- **Accuracy of circuit Breaker:** +/- 1.5% of the set Amp
- **Operation Temperature:** -40 to 70 deg C
- **Standard Compliance:** CE Electromagnetic Compatibility 2004/108/EC
- **Net weight:** 6 kg / 13.2 lb
- **Gross weight:** 7 kg / 15.4 lb
- **Box dimension:** 315 x 177 x 1750 mm (12.4" x 7" x 6.9")

*\* Factory programmed for customer specifications. Can be reprogrammed by optional digits regulator panel.*

## Control Box

---



- **PN 881581** (12V) / **PN 881582** (24V) for Rhino 8, w/built-in over-load protector
- **PN 881645** (12V) / **PN 881646** (24V) for Rhino 12/15, w/built-in over-load protector
- **PN 883406** (12V) / **PN 883521** (24V) ICB for Rhino 8 Pro/12 Pro/15 Pro
- **PN 882313** (12V) / **PN 882314** (24V) for GTD-650/800/1200
- **PN 882360** (12V) / **PN 882361** (24V) for GTD-2200/2800
- **PN 880340** (12V) / **PN 880341** (24V) for Wolf 8.5/12.0

## Wire Rope with Hook

---



- **PN 881239** 8.0 mm x 45 m (5/16" x 150') for Wolf 8.5
- **PN 880106** 9.5 mm x 30.5 m (3/8" x 100') for Wolf 12.0



## Remote Control

---



- **PN 880025** for Wolf 8.5 /12.0
- **PN 880126** for Rhino 8/12/15 (comes with protective thermal sensor LED)
- **PN 883509** for Rhino 8/12/15 Pro (comes with protective thermal sensor LED)

## Roller Fairlead

---



- **PN 880160** 179 mm throat for HV-8 Std. drum, Bison 20 Std. drum / 30 Std. drum
- **PN 880180** 245 mm throat for HV-8 Long drum, HV-10/12/15
- **PN 883400** 245 mm throat, SUS (steel special use stainless), for HV-8 Long drum, HV-10/12/15
- **PN 882481** 179 mm throat for Rhino 8/8 Pro/12/12 Pro/15/15 Pro
- **PN 881479** 149 mm throat for Yak 7 Std. drum
- **PN 881480** 229 mm throat for Yak 7 Long drum
- **PN 882238** 330 mm throat for Bison 20 Long drum / 30 Long drum
- **PN 882797** 330 mm throat for Bison 50
- **PN 880023** 210 mm throat for Wolf 8.5/12.0

## Snatch Block

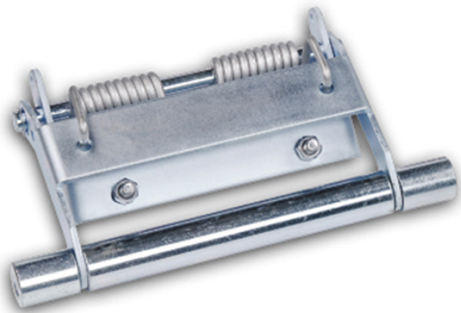
---



- **PN 881079** Max. load 10,000 kg / 22,000 lb
- **PN 881082** Max. load 13,610 kg / 30,000 lb
- **PN 883866** Max. load 22,680 kg / 50,000 lb
- **PN 883621** Max. load 31,752 kg / 70,000 lb

## Cable Tensioner

---



- **PN 882796** 345 mm for Bison 50
- **PN 881983** 193 mm for Bison 20/30 Std. drum
- **PN 882195** 345 mm for Bison 20/30 Long drum
- **PN 881238** 184 mm for HV-8 Std. drum
- **PN 880179** 249 mm for HV-8 Long drum, HV-10/12/15
- **PN 881236** 153 mm for Yak 7 Std. drum
- **PN 881237** 233 mm for Yak 7 Long drum
- **PN 881667** 204 mm for Rhino 8
- **PN 883552** 193 mm for Rhino 12/15
- **PN 880358** 222 mm for Wolf 8.5/12.0

## Air Clutch

---



- 
- [PN 883226](#) for HV-8/10
  - [PN 883227](#) for HV-12/15

## Extended Clutch Kit

---



- 
- [PN 881314](#) for HV-8/10
  - [PN 883386](#) for HV-12/15

## Over Center Valve

---



- 
- **PN 883314** Over Center Valve, Max.: 280 bar for HV-8/10/12/15
  - **PN 883407** Counterbalance Valve, Max.: 280 bar for Bison 20/30
  - **PN 882804** Counterbalance Valve, Max.: 350 bar for Bison 50

## Battery Isolation Switch

---



- 
- **PN 881097** 2 Position Off-On 12V 500 Amp for Rhino 8/12, Wolf 8.5/12.0

## Emergency Stop Switch

---



- 
- Emergency Stop Switch, **PN 881668** 400A

## Control Box

---



- 
- **PN 882313** (12V) / **PN 882314** (24V) for GTD-650/800/1200
  - **PN 882360** (12V) / **PN 882361** (24V) for GTD-2200/2800

## Remote Control

---



- **PN 880025** for GTD-650/800/1200/2200/2800

## Hook

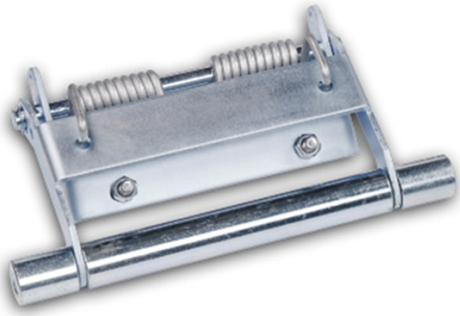
---



- **PN 881997** 5/16" for GTD-650/800
- **PN 881995** 3/8" for GTD-1200/2200
- **PN 881996** 1/2" for GTD-2800

## Cable Tensioner

---



- 
- **PN 882984** 182 mm for APE-16/19
  - **PN 882985** 311 mm for APE-19 Long drum
  - **PN 882986** 182 mm for APE-9/12

## Wire Rope

---



- 
- **PN 882413** 3.6 mm x 18.3 m (9/64" x 60') for GTD-650
  - **PN 882411** 4.0 mm x 18.3 m (5/32" x 60') for GTD-800
  - **PN 882410** 4.8 mm x 18.3 m (3/16" x 60') for GTD-1200
  - **PN 882484** 6.4 mm x 30.5 m (1/4" x 100') for GTD-2200
  - **PN 882487** 7.9 mm x 28 m (5/16" x 92') for GTD-2800



# Battery Isolation Switch

---



- **PN 881097** 2 Position Off-On 12V 500 Amp for GTD Series

Алматы (7273)495-231  
Ангарск (3955)60-70-56  
Архангельск (8182)63-90-72  
Астрахань (8512)99-46-04  
Барнаул (3852)73-04-60  
Белгород (4722)40-23-64  
Благовещенск (4162)22-76-07  
Брянск (4832)59-03-52  
Владивосток (423)249-28-31  
Владикавказ (8672)28-90-48  
Владимир (4922)49-43-18  
Волгоград (844)278-03-48  
Вологда (8172)26-41-59  
Воронеж (473)204-51-73  
Екатеринбург (343)384-55-89

Иваново (4932)77-34-06  
Ижевск (3412)26-03-58  
Иркутск (395)279-98-46  
Казань (843)206-01-48  
Калининград (4012)72-03-81  
Калуга (4842)92-23-67  
Кемерово (3842)65-04-62  
Киров (8332)68-02-04  
Коломна (4966)23-41-49  
Кострома (4942)77-07-48  
Краснодар (861)203-40-90  
Красноярск (391)204-63-61  
Курск (4712)77-13-04  
Курган (3522)50-90-47  
Липецк (4742)52-20-81  
Россия +7(495)268-04-70

Магнитогорск (3519)55-03-13  
Москва (495)268-04-70  
Мурманск (8152)59-64-93  
Набережные Челны (8552)20-53-41  
Нижегород (831)429-08-12  
Новокузнецк (3843)20-46-81  
Новосибирск (3496)41-32-12  
Новосибирск (383)227-86-73  
Омск (3812)21-46-40  
Орел (4862)44-53-42  
Оренбург (3532)37-68-04  
Пенза (8412)22-31-16  
Петрозаводск (8142)55-98-37  
Псков (8112)59-10-37  
Пермь (342)205-81-47  
Казахстан +7(7172)727-132

Ростов-на-Дону (863)308-18-15  
Рязань (4912)46-61-64  
Самара (846)206-03-16  
Санкт-Петербург (812)309-46-40  
Саратов (845)249-38-78  
Севастополь (8692)22-31-93  
Саранск (8342)22-96-24  
Симферополь (3652)67-13-56  
Смоленск (4812)29-41-54  
Сочи (862)225-72-31  
Ставрополь (8652)20-65-13  
Сургут (3462)77-98-35  
Сыктывкар (8212)25-95-17  
Тамбов (4752)50-40-97  
Тверь (4822)63-31-35  
Киргизия +996(312)96-26-47

Тольятти (8482)63-91-07  
Томск (3822)98-41-53  
Тула (4872)33-79-87  
Тюмень (3452)66-21-18  
Ульяновск (8422)24-23-59  
Улан-Удэ (3012)59-97-51  
Уфа (347)229-48-12  
Хабаровск (4212)92-98-04  
Челябинск (351)202-03-61  
Челябинск (8202)49-02-64  
Чита (3022)38-34-83  
Якутск (4112)23-90-97  
Ярославль (4852)69-52-93

<https://comeup.nt-rt.ru/> || [cpb@nt-rt.ru](mailto:cpb@nt-rt.ru)